



Old Town, Clapham, SW4

1 bedroom flat - purpose built for sale

£650,000

Leasehold

Property Details

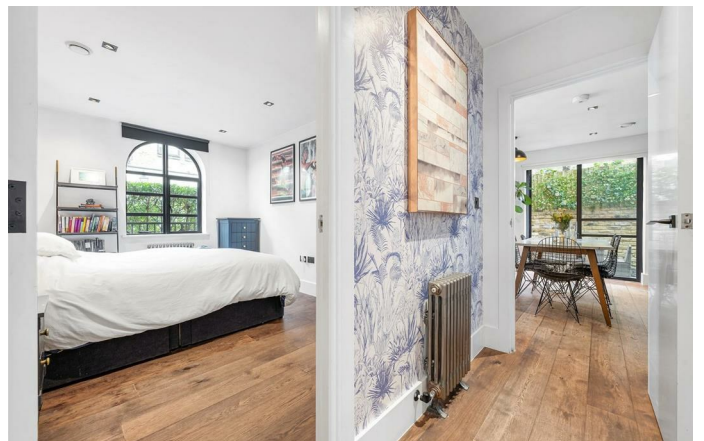
A striking one bedroom apartment with a private garden terrace and its own front door, set within the exclusive gated development of The Metalworks in Clapham Old Town. Originally home to the Art Metal Works, founded by celebrated metalworker William Bainbridge Reynolds, the historic site has been transformed by award-winning developers into a remarkable collection of loft-style homes, blending industrial character with contemporary luxury. Behind grand gates and a landscaped courtyard, this apartment enjoys its own private entrance, framed by arched windows, railings and hedging for privacy. Inside, exposed brickwork, bespoke finishes and thoughtful design create a warm industrial feel. The open-plan reception and kitchen is a stylish heart of the home, with matt-black kitchen units, copper accents, integrated Smeg appliances, wine cooler, and Sonos speakers. French doors open to a private terrace, ideal for dining al fresco. The spacious bedroom boasts a dressing area with built-in storage, while the bathroom pairs timeless monochrome tiling with a double-ended bath, rain-shower and bespoke vanity. Residents also enjoy a beautiful courtyard celebrating the site's artisanal past, all moments from Clapham Common.

Council tax band D

EPC rating D (66)

Features

- One double bedroom
- Private garden terrace
- Own entrance
- Contemporary gated development
- Quietly tucked away in a prime Old Town location
- Landscaped residents courtyard
- Vast array of boutique shops and up-market eateries in the doorstep
- Green expanses of Clapham Common a three-minute stroll
- Northern Line a short walk away
- Chain-free



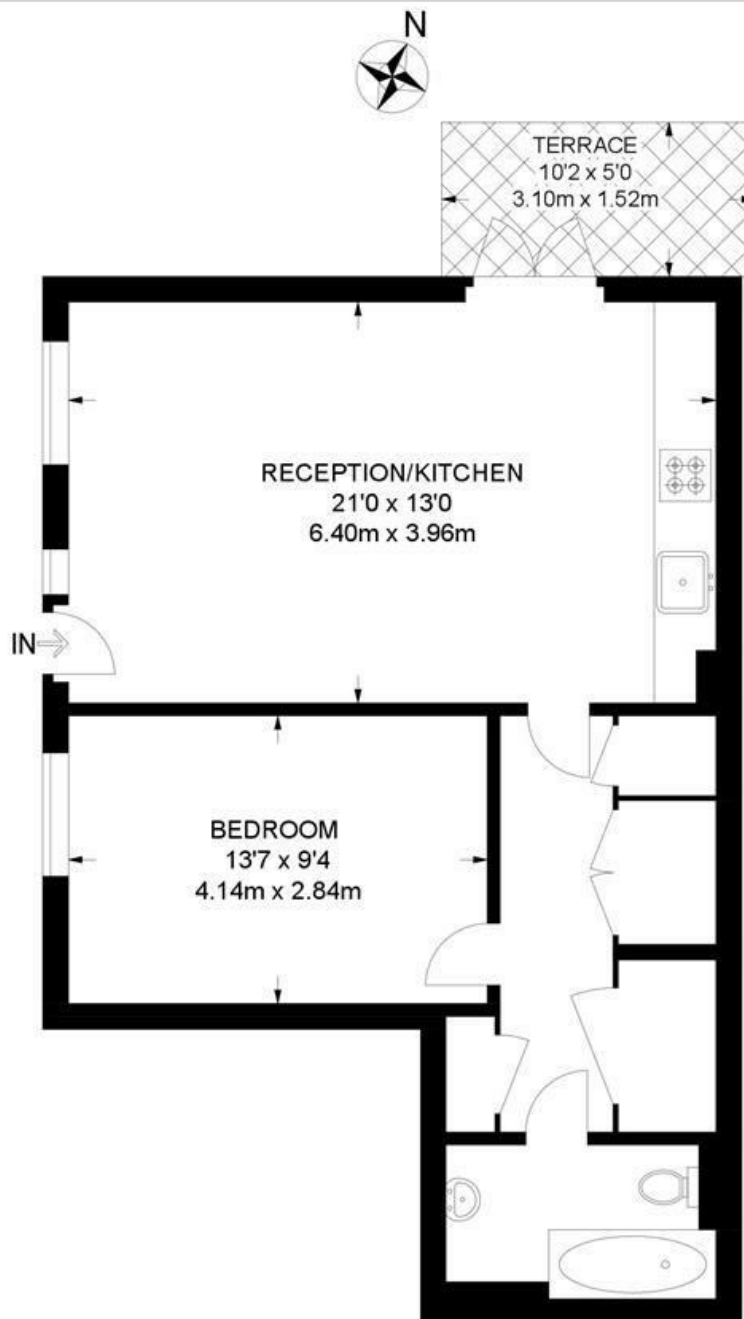


Old Town, Clapham, SW4

Old Town, SW4

1 Bedroom Flat

APPROXIMATE GROSS INTERNAL AREA: **562 SQ FT / 52.2 SQ M**



GROUND FLOOR



While we try our very best, floor plans are produced as a guide only and we take no responsibility for the precise accuracy with which any property is represented.

Old Town, Clapham, SW4

