



Kendooa Road, Clapham, SW4

2 bedroom flat - conversion for sale

£575,000

Leasehold

Property Details

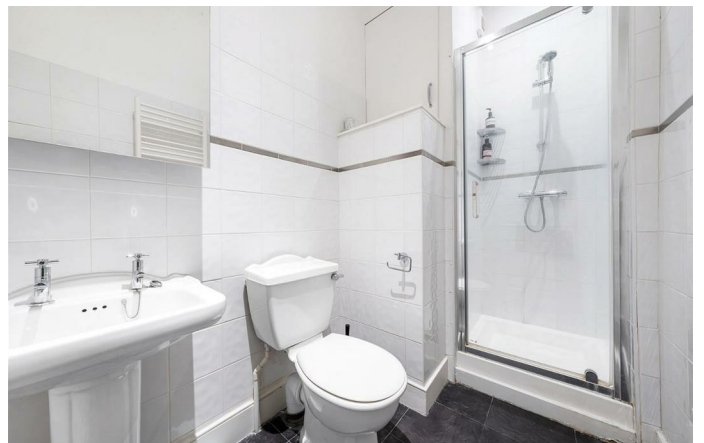
An appealing two double bedroom, two bathroom Victorian conversion, set on the first floor of a handsome period property on a peaceful residential street. With a welcoming sense of community, residents enjoy the use of communal seating and a ping pong table on the pedestrianised concourse. Offering over 700 square feet, this neutrally finished home combines characterful charm with a smart layout, ready to move into while allowing scope to add personal style. The generous reception room is bathed in natural light from a bay window, complemented by high corniced ceilings and contemporary flooring, creating a bright and versatile entertaining space. A separate kitchen with timeless shaker-style cabinetry provides excellent storage and leafy views, with potential for a breakfast bar. The expansive principal bedroom boasts dual sash windows and an elegant staircase to a luxurious en-suite with roll-top bath and walk-in shower. A second bedroom with fitted wardrobes is served by a further neutral bathroom, offering versatility as a nursery, guest room or office.

Council tax band D

EPC rating C (78)

Features

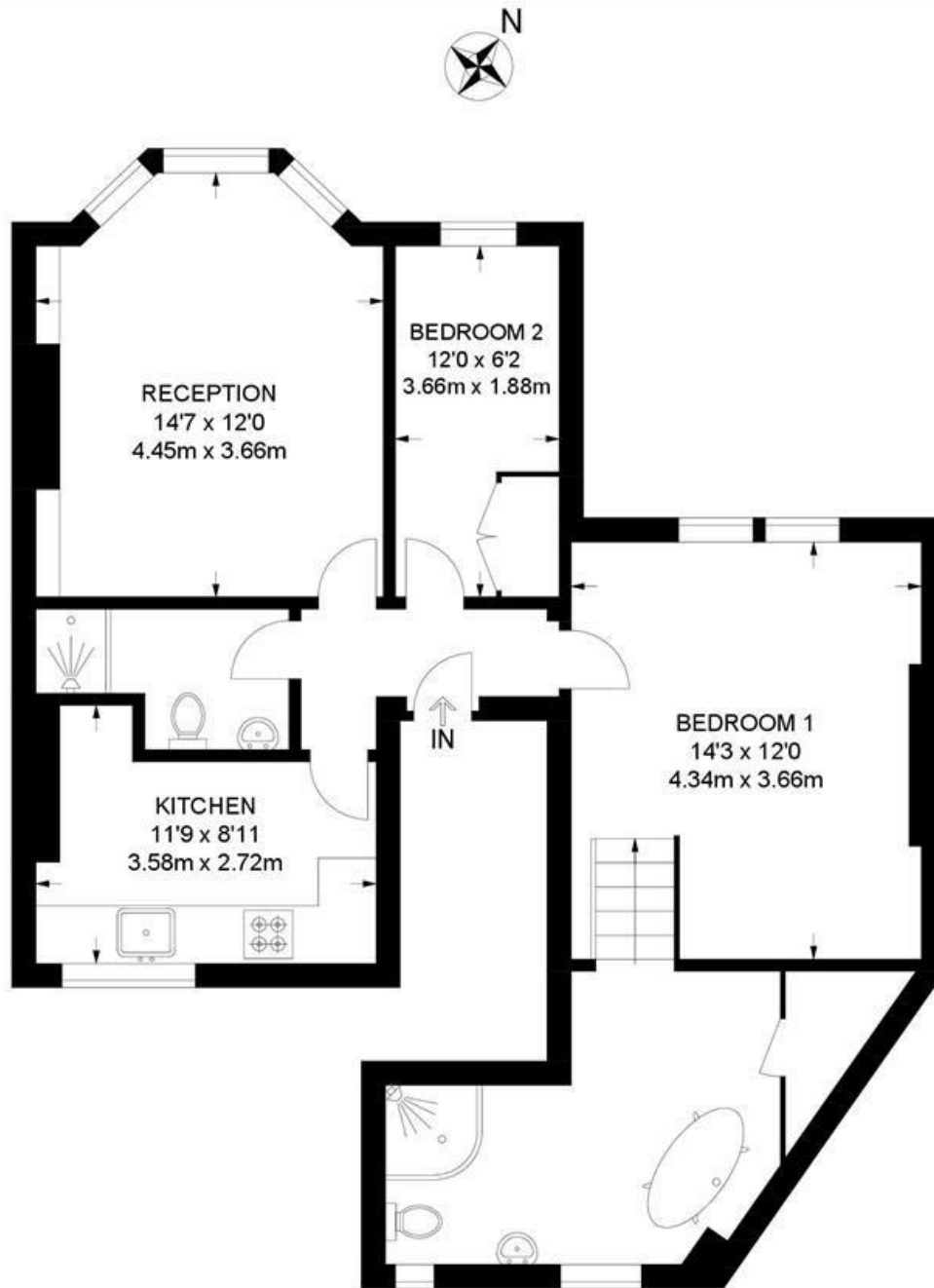
- Two bedrooms
- Two bathrooms
- Victorian conversion
- Over 700 square feet
- Separate kitchen and reception
- Residential street with low traffic flow
- Clapham High Street a three-minute stroll
- Northern Line a five-minute walk
- Clapham Common a ten-minute walk
- Chain-free



Kendooa Road, Clapham, SW4

Kendooa Road, SW4
2 Bedroom Flat

APPROXIMATE GROSS INTERNAL AREA: **709 SQ FT / 65.9 SQ M**



FIRST FLOOR



While we try our very best, floor plans are produced as a guide only and we take no responsibility for the precise accuracy with which any property is represented.

Kendoa Road, Clapham, SW4

