



## Thorncliffe Court, Kings Avenue, Brixton, SW4

2 bedroom flat - purpose built for sale

**£425,000**

Leasehold

### Property Details

A well-proportioned two bedroom flat, peacefully positioned on the first floor of Thorncliffe Court - a private, well-maintained mansion block discreetly set back from Kings Avenue. Offering over 700 square feet, this charming home also benefits from tranquil communal gardens and a secure bike store. Accessed via an elegant communal entrance, the property opens into a long hallway that enhances the sense of space. The generous reception room is flooded with natural light and offers plenty of room to relax and dine. The separate kitchen is neatly arranged to maximise worktop and storage space, ideal for modern living. The bathroom is smartly finished in a contemporary style with a bathtub and overhead shower. Both bedrooms are well-proportioned, ideal for sharers or those seeking a guest room or home office. The principal bedroom is particularly spacious, offering a serene and comfortable retreat, whilst the second bedroom comfortably accommodates a double bed and additional furnishings. A well-connected location, this appealing flat is ready to move into, with scope to personalise.

### Features

- Two bedrooms
- Period mansion block
- Over 700 square feet
- Well maintained communal gardens and bike storage
- Equidistant to Clapham and Brixton High Streets
- Abbeville Village within walking distance
- Access to the Northern and Victoria tube lines
- Chain-free

Council tax band C      EPC rating D (65)



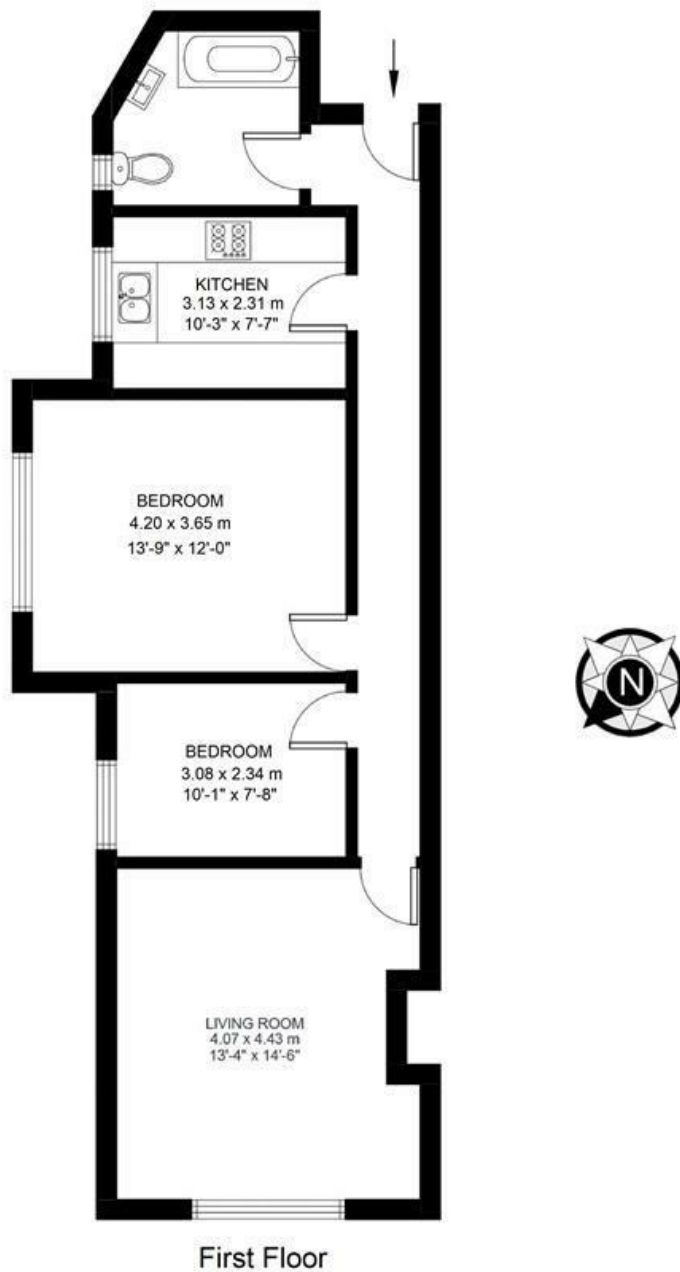


Thorncliffe Court, Kings Avenue, Brixton, SW4

## Kings Avenue, SW4

### 2 Bedroom Flat

APPROXIMATE GROSS INTERNAL AREA: 706 SQ FT / 66 SQ M



While we try our very best, floor plans are produced as a guide only and we take no responsibility for the precise accuracy with which any property is represented.



Thorncliffe Court, Kings Avenue, Brixton, SW4

