



Belvedere Place, SW2

2 bedroom flat - purpose built for sale

£465,000

Leasehold

Property Details

A two double bedroom flat with an off street parking space located between Brixton and Clapham town centres. You enter the property into a spacious central entrance hall which feeds two double bedrooms and a contemporary bathroom. The open plan reception is a great size with ample room to relax and dine.

The kitchen has all you need in terms of mod cons with a convenient breakfast bar. The flat has been tastefully decorated throughout with built-in storage. A large supermarket sits within a minutes' walk on the other side of Acre Lane and the wonders of Brixton are just on your doorstep

Features

- Purpose Built and Securely Gated Flat
- 2 Bedrooms
- Close to Transport Links
- Central Location
- Allocated Off-Street Parking Space
- Walking Distance to Both Northern & Victoria Lines

Council tax band D

EPC rating C (69)

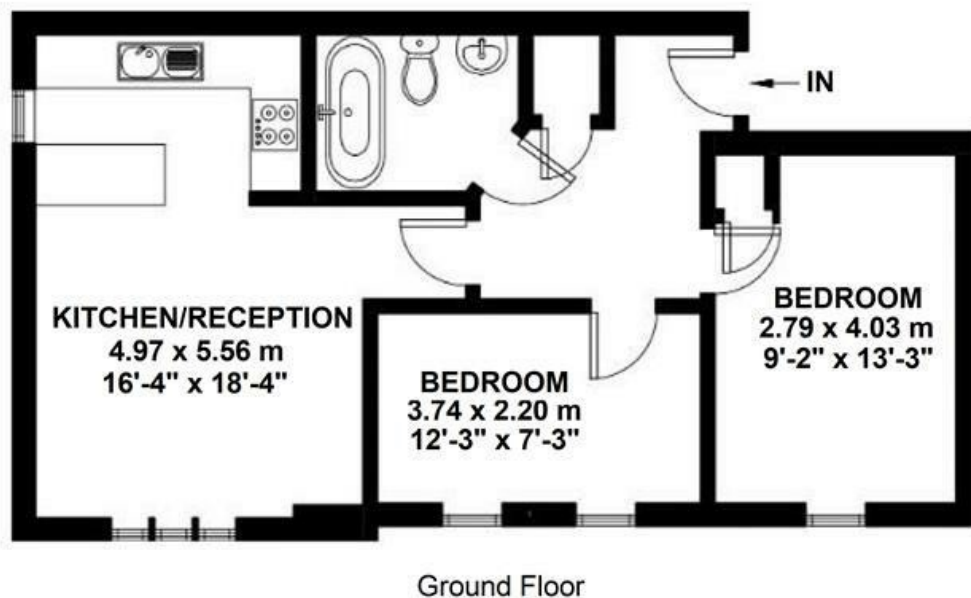


Belvedere Place, SW2

Belvedere Place, SW2

2 Bedroom Flat

APPROXIMATE GROSS INTERNAL AREA: 593 SQ FT / 55 SQ M



While we try our very best, floor plans are produced as a guide only and we take no responsibility for the precise accuracy with which any property is represented.

Belvedere Place, SW2

