



**Santley Street, Brixton, SW4**

2 bedroom flat to let

**£520 Per Week**

Part furnished

## Property Details

A stunning two bedroom flat in the heart of Brixton. This beautiful property comprises two good sized double bedrooms, a modern and bright kitchen which leads on to a spacious reception room flooded with heaps of natural light through the sky lights and the patio garden which really completes this fabulous flat. Living here you'll be around a ten minute walk away from Brixton underground station and everything that Brixton high street has to offer which includes chained and local shops, bars and restaurants - making this ideal for professional sharers.

## Features

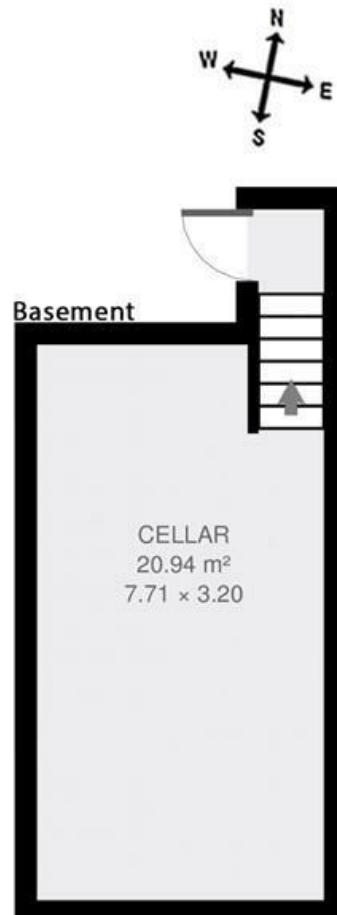
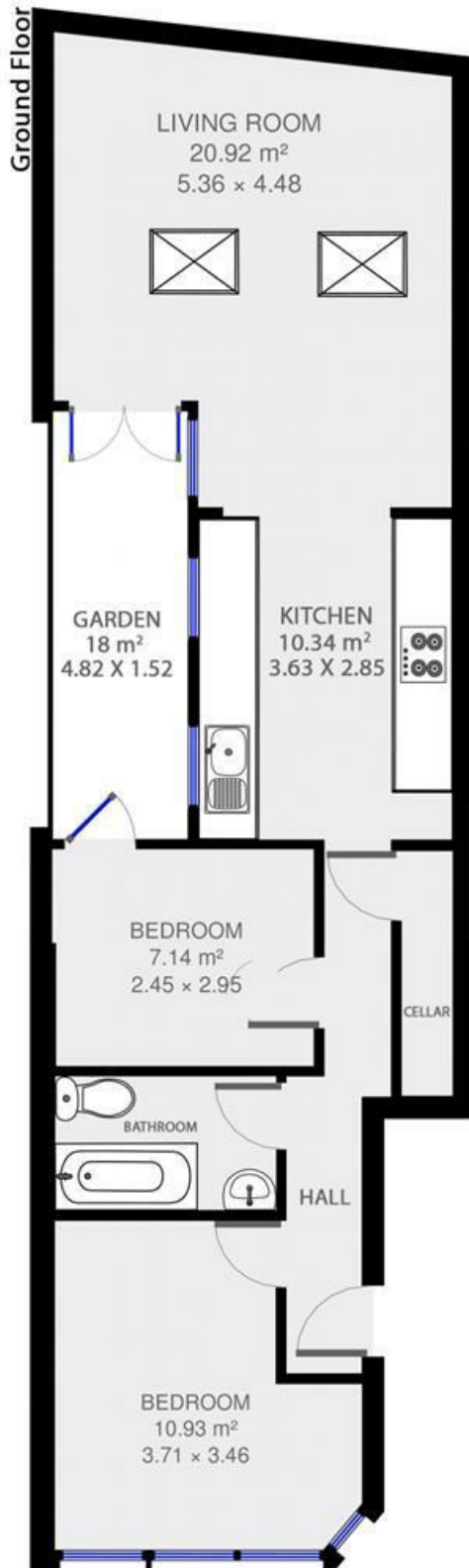
- Private garden
- Around a 17 minute walk to Brockwell park
- Two bedrooms
- Hardwood floors and doors
- Open plan kitchen and reception
- Around a 10 minute walk to Brixton underground
- Bright and airy

Council tax band C      EPC rating C (72)



Santley Street, Brixton, SW4

## Santley Street



2 Bed Flat.

Approx internal area:

**862 sqft 80 sqm**

While we do try our very best, floor plans are produced as a guide only and we take no responsibility for the precise accuracy with which any property is represented



Santley Street, Brixton, SW4

