



Kellett Road, Brixton, SW2

2 bedroom flat to let

£485 Per Week

Furnished

Property Details

This is a superb, well-proportioned open plan two double bedroom flat located in the heart of Brixton. Both bedrooms are good sized doubles and the open plan kitchen and reception area is modern and stylish with gorgeous bay windows flooding the room with plenty of natural light. Kellett Road is located within a short walk to either Brixton centre or Herne Hill, giving you fantastic transport options into central London. The beloved green open spaces of Brockwell Park are just around a twelve minute walk away which is perfect for enjoying winter walks or the coming summer months.

Features

- Two double bedrooms
- Modern family bathroom
- Open plan living area and kitchen
- Bright and airy throughout
- Around a 6 minute walk to Brixton underground
- Around a 12 minute walk to Brockwell Park

Council tax band C EPC rating C (71)



Kellett Road, Brixton, SW2



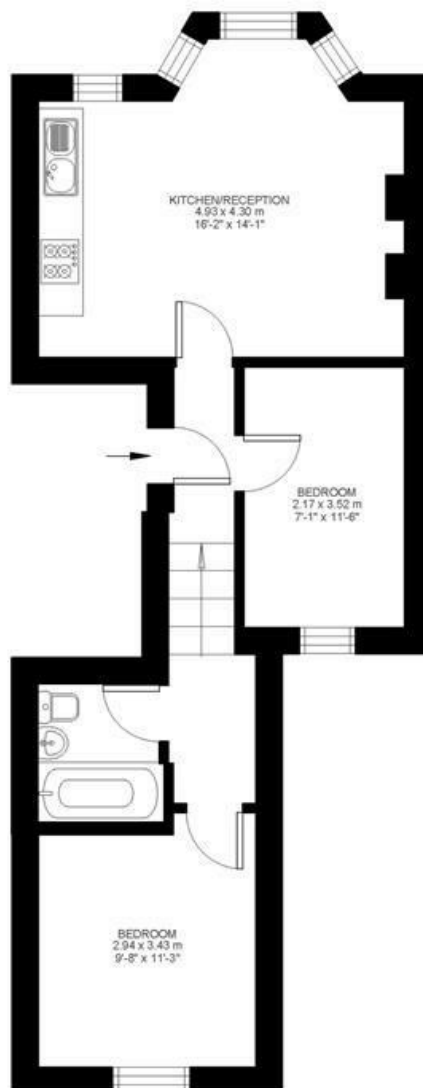
2 Bed flat

Approx internal area:

507 sqft 47 sqm

While we do try our very best, floor plans are produced as a guide only and we take no responsibility for the precise accuracy with which any property is represented

Kellett Road



First Floor



Kellett Road, Brixton, SW2

