



Alpha House, Santley Street, Clapham, SW4

2 bedroom flat - conversion for sale

£600,000

Share of Freehold

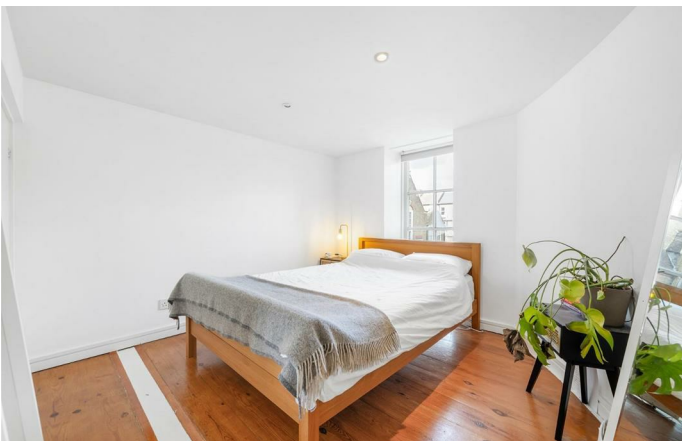
Property Details

A fantastic two bedroom apartment set within a secure gated Victorian school conversion with extensive communal gardens, an on-site gym and sauna. Peacefully tucked away, this sought-after development offers a unique blend of character and modern living. Spanning over 770 square feet across two floors, this bright and spacious home features a striking glass feature wall upon entry, double-height ceilings, and abundant natural light. The expansive open-plan reception is perfect for lounging, dining, and entertaining, with bespoke shutters enhancing warmth and privacy. A stylish wrap-around kitchen, finished in bold purple hues with sleek countertops and integrated appliances, balances elegance with functionality. Upstairs, the principal bedroom boasts fitted wardrobes and a crescent-shaped Juliet balcony, adding architectural charm. The second bedroom offers versatility, overlooking the reception below. A stylish, neutral-toned bathroom with contemporary fittings and a rain shower completes the home. Set within a pet-friendly, neighbourly community, this distinctive property is a rare find.

Features

- Two bedrooms
- Victorian school conversion
- Grade II-listed
- Gym and sauna on-site
- Over 770 square feet
- Expansive communal grounds
- A ten minute stroll to both Clapham and Brixton centres
- Northern and Victoria Lines
- Share of freehold
- Chain-free

Council tax band E EPC rating D (61)

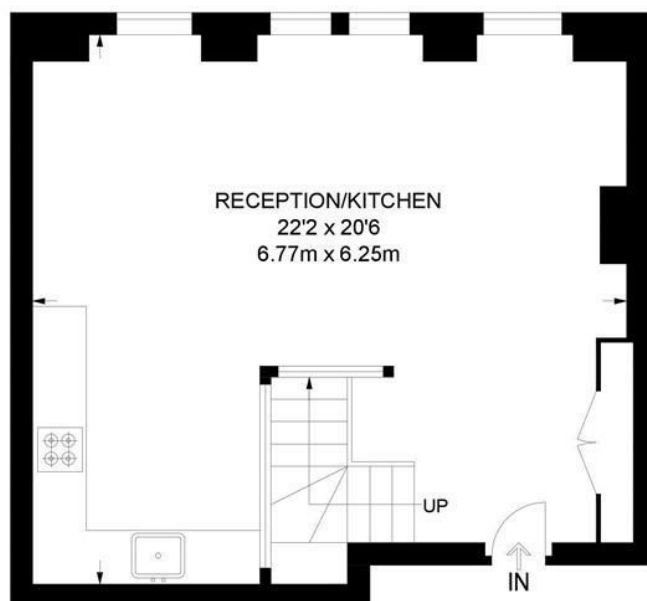




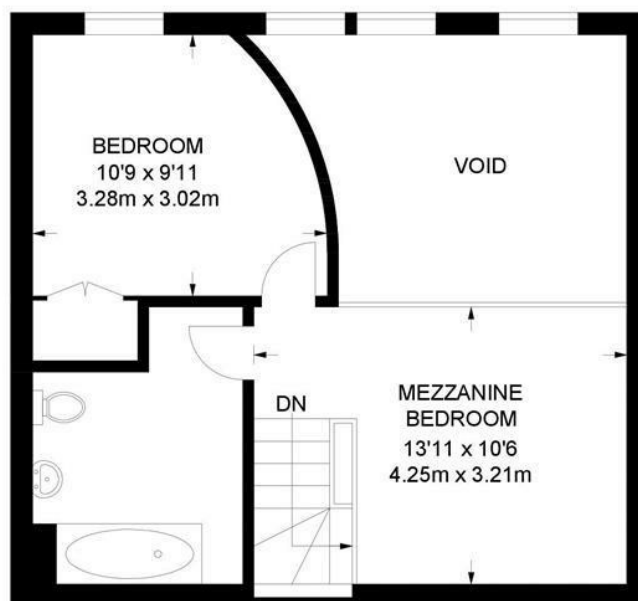
Alpha House, Santley Street, Clapham, SW4

Alpha House, SW4
2 Bedroom Flat

APPROXIMATE GROSS INTERNAL AREA: **775 SQ FT / 72 SQ M**



GROUND FLOOR



FIRST FLOOR



While we try our very best, floor plans are produced as a guide only and we take no responsibility for the precise accuracy with which any property is represented.

Alpha House, Santley Street, Clapham, SW4

