

**Klea Avenue, Clapham, SW4**

5 bedroom house for sale

**£1,500,000**

Freehold

## Property Details

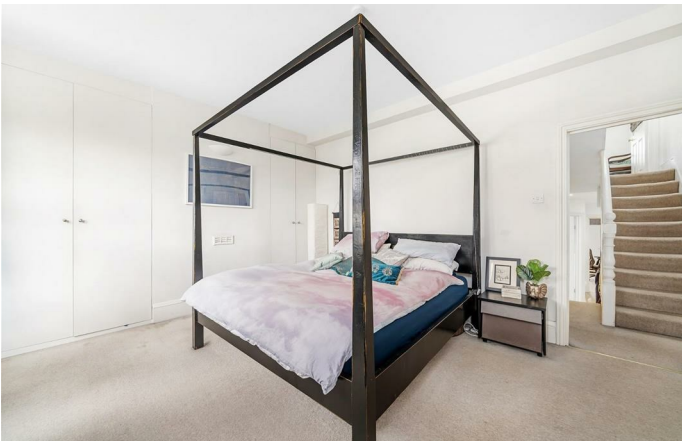
An extended five bedroom Victorian house on the sought-after Klea Avenue. This home offers fantastic living space, with the costly extension work already complete, it's the ideal blank canvas ready to add your own decorative touches. The double reception room boasts a warm ambience, bathed in light from front and rear owing to the ceiling lanterns in the dine-in kitchen behind. Bright and spacious, the kitchen can accommodate a dining table, breakfast bar and plentiful storage within statement cabinets. Two sets of French doors lead out to the private garden with outhouse. South-West facing this sunny spot is laid to astro turf with shrubbery borders. Completing the ground floor is a W.C., hallway storage and access to a cellar. Upstairs, five double bedrooms plus two bathrooms. The principal bedroom spans the width of the home with views down Lynette Avenue to the Common beyond. Similarly spacious, the second bedroom sits above, nestled peacefully at the top of the house. The three further double bedrooms enjoy garden views, one was used as a dressing room hence the abundance of built-in wardrobes.

## Features

- Five double bedrooms
- Two bathrooms plus downstairs WC
- South-West facing private garden
- Victorian terraced house
- Fully extended ready to add your own decorative stamp
- Abbeville Village and Clapham Common both a three-minute stroll
- Short walk to both Clapham and Balham High Streets
- Northern Line a six-minute walk
- Freehold

Council tax band G    EPC rating (null)





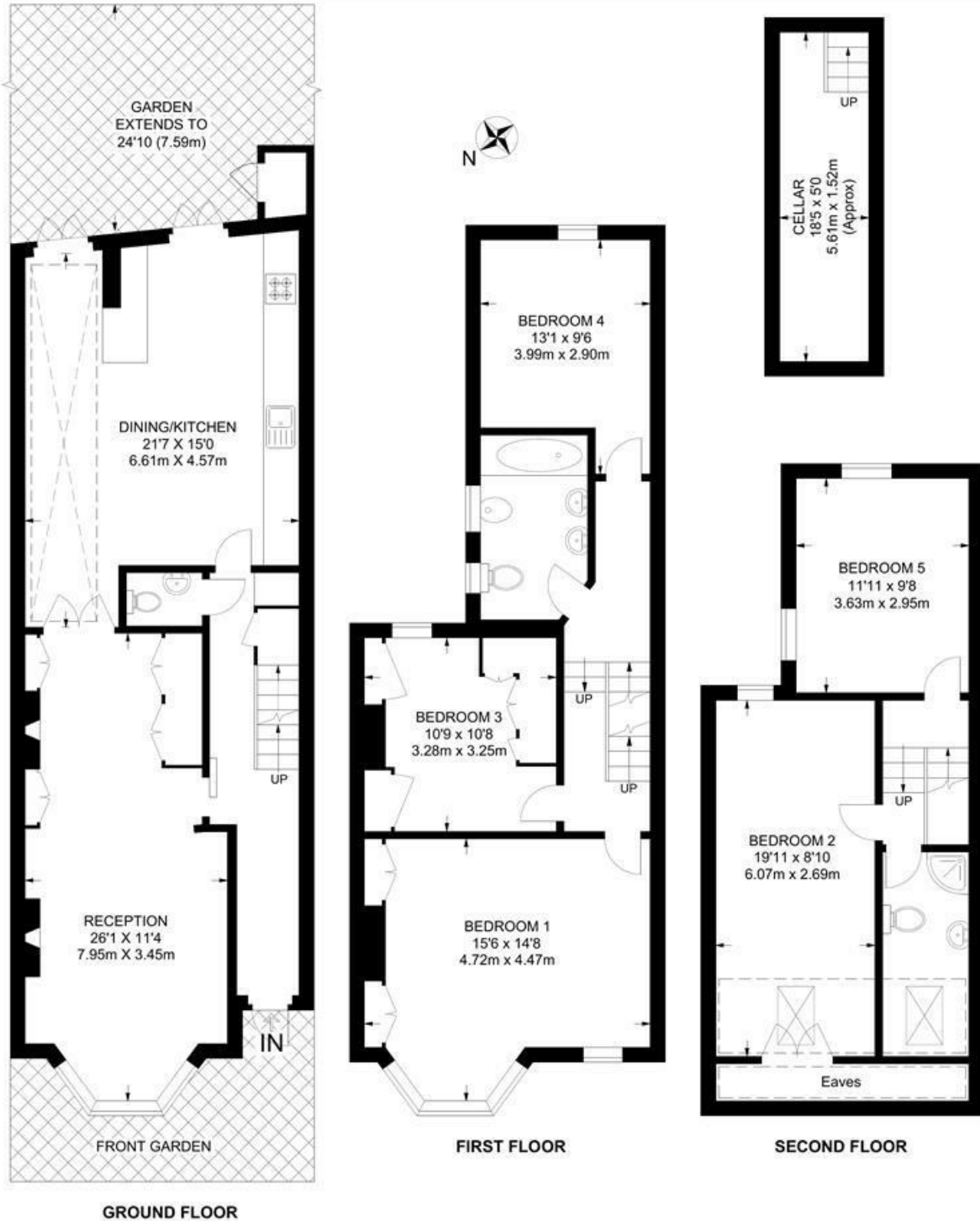




Klea Avenue, Clapham, SW4

**Klea Avenue, SW4**  
**5 Bedroom House**

APPROXIMATE GROSS INTERNAL AREA WITHOUT CELLAR: 1741 SQ FT / 161.7 SQ M



While we try our very best, floor plans are produced as a guide only and we take no responsibility for the precise accuracy with which any property is represented.

Klea Avenue, Clapham, SW4

