

Helix Road, Brixton, SW2

2 bedroom flat for sale

£625,000

Leasehold

Property Details

A recently redecorated two double bedroom apartment with a private South-East facing garden. Recently renovated this enticing home is ready to move into with the potential to decorate to your own tastes. Precedent has been set should the purchaser wish to seek the necessary permissions to extend in the future. This lovely home has two well-proportioned double bedrooms, one with a large bay window flooding the room with light, the other with French doors to the side return of the garden. The bathroom separates the bedrooms allowing privacy for each, ideal for sharers. The generous proportions of the reception room, including a characterful bay window, allows ample space for a separate living room area, a dining space and an already semi-separated kitchen. French doors from the kitchen allow a transition out to the low-maintenance private garden. South-East facing this suntrap is ideal for willing away the summer months. An enticing home packed full of potential on a sought-after street with amenities in every direction. A share of the freehold will be granted upon the sale of the final flat in the building.

Features

- Two double bedrooms
- South-East facing private garden
- Victorian conversion
- Potential to extend STNP
- Recently redecorated
- Sought-after, quiet residential street
- Brixton and Herne Hill both within fifteen-minutes walk
- Brockwell Park close by
- Chain-free
- A share of the freehold will be granted

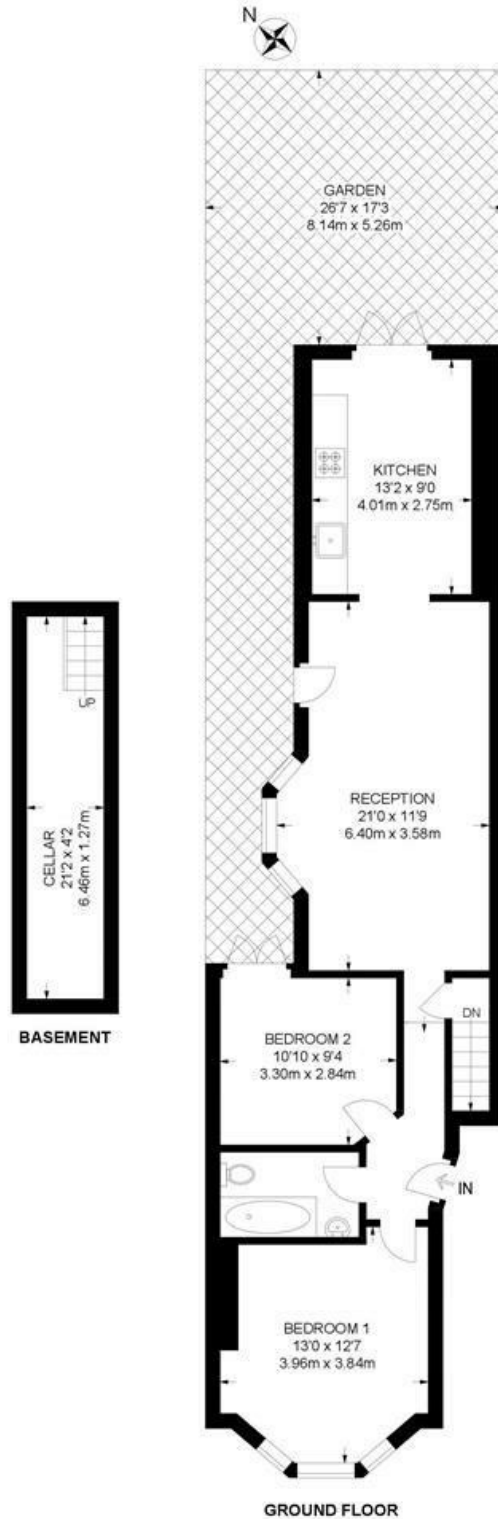
Council tax band C EPC rating C (70)



Helix Road, Brixton, SW2

Helix Road, SW2
2 Bedroom Flat

APPROXIMATE GROSS INTERNAL AREA: **754 SQ FT / 70 SQ M**



While we try our very best, floor plans are produced as a guide only and we take no responsibility for the precise accuracy with which any property is represented.

Helix Road, Brixton, SW2

