



Kay Road, Clapham, SW9

2 bedroom flat - conversion for sale

£550,000

Leasehold

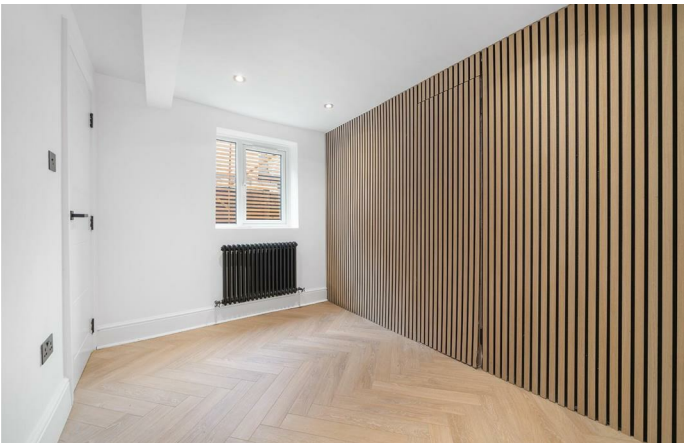
Property Details

GUIDE PRICE: £550,000 - £600,000. A fantastic two bedroom, two bathroom apartment with a large private garden in a Victorian townhouse. Recently refurbished throughout this immaculate property has a new re-wire, plumbing, new kitchen, new bathrooms, new flooring and new décor throughout. To the front is a bright and welcoming reception, boasting an attractive square bay window, space for a lounge and dining area and stunning herringbone flooring. This contemporary flooring sweeps through the majority of the home, leading through into the separate kitchen. Sleek and contemporary the kitchen wraps around to maximise storage, integrating appliances for a neat finish. Perfect for an ease of transition to al-fresco dining the kitchen leads out to the large private garden with a decked patio and grassy lawn, complete with outdoor lighting. Ideal for sharers, the bedrooms are set apart for privacy, both enjoying a peaceful position overlooking the deck. One of the bedrooms features a cleverly concealed ensuite shower room. The main house bathroom is luxurious with a double-ended bathtub with overhead shower. Both bathrooms also have the added perk of underfloor heating.

Council tax band C EPC rating D (66)

Features

- Two bedrooms
- Two bathrooms
- Private landscaped garden
- Victorian conversion
- Recently renovated throughout
- Sought-after location
- Clapham, Brixton and Stockwell all under a ten-minute walk
- Victoria and Northern lines
- Fantastic array of amenities in every direction
- Chain-free



Kay Road, Clapham, SW9

Kay Road, SW9
2 Bedroom Flat

APPROXIMATE GROSS INTERNAL AREA: **562 SQ FT / 52.2 SQ M**



While we try our very best, floor plans are produced as a guide only and we take no responsibility for the precise accuracy with which any property is represented.

Kay Road, Clapham, SW9

