

**Leander Road, Brixton, SW2**

2 bedroom flat to let

£489 Per Week

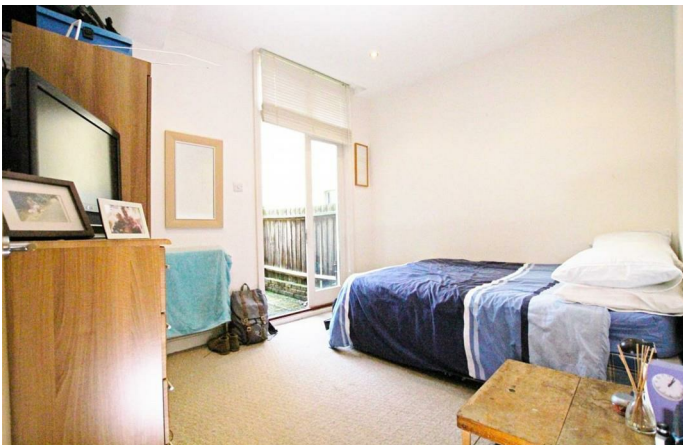
Furnished

Property Details

This flat is lovely - a large, bright living space opens on two sides onto a manageable garden with seating area - perfect for summer. 2 large double bedrooms share a sleek, modern bathroom and there is a large entrance hall. The street is part of the Josephine Avenue conservation area and is highly sought after for its character, feel and proximity to Brockwell park, Herne Hill and beyond. There are also bars and restaurants of Effra road and Brixton Hill. A little further down the hill, you have everything that Brixton has to offer, from music venues and tonnes of international restaurants, to large high street shops.

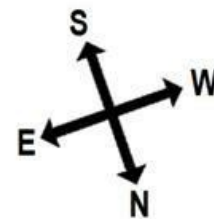
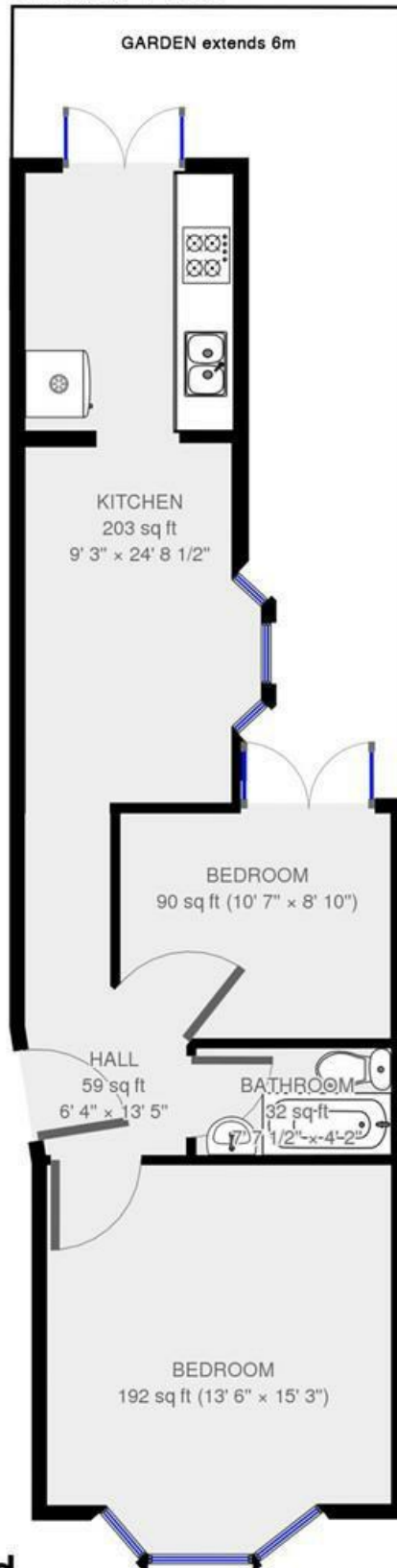
Features

Council tax band D EPC rating D (64)



Leander Road, Brixton, SW2

Ground Floor



2 bed Flat.
Approx internal area:

576 sqft 54 sqm

While we do try our very best, floor plans are produced as a guide only and we take no responsibility for the precise accuracy with which any property is represented

Leander Road, Brixton, SW2

