



**St. Saviours Road, Brixton, SW2**

**£600,000**

1 bedroom flat - conversion for sale

Share of Freehold

## Property Details

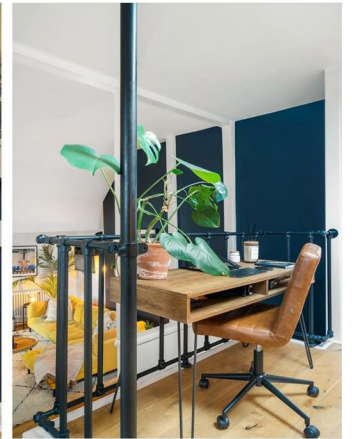
An incredibly large one bedroom designer apartment in a charming Victorian detached house. A fine example of an immaculate home which has been professionally designed by an interior decorator, with impeccable taste throughout. This beautiful home was previously a three bedroom and offers an abundance of selling points including bespoke features, lighting design and underfloor sound proofing, suited to those who like to entertain. The positioning over the upper floors ensures a bright and private ambience. Stairs lead from the inviting entrance into the sprawling open-plan reception, this fantastic entertaining space is split over two floors, creating a welcoming lounge area with high ceilings, nestled below a mezzanine, the ideal nook for a secondary lounge area come office space. An expansive kitchen is neatly arranged within sleek cabinetry providing ample storage space with feature lighting above the dining table for a pleasant evening ambience. Set behind a characterful arched sash window, the bedroom has lofty ceilings creating a cosy environment, with a wall of wardrobes. The tasteful bathroom separates the bedroom from the social spaces, equipped with a bathtub with overhead rain shower.

## Features

- One double bedroom
- Detached Victorian conversion
- Professionally designed interiors
- Over 900 square feet
- Desirable street
- Local amenities of Brixton Hill
- Central Brixton a ten-minute stroll
- Victoria Line and Brockwell Park nearby
- Share of freehold
- Chain-free

Council tax band D    EPC rating E (49)







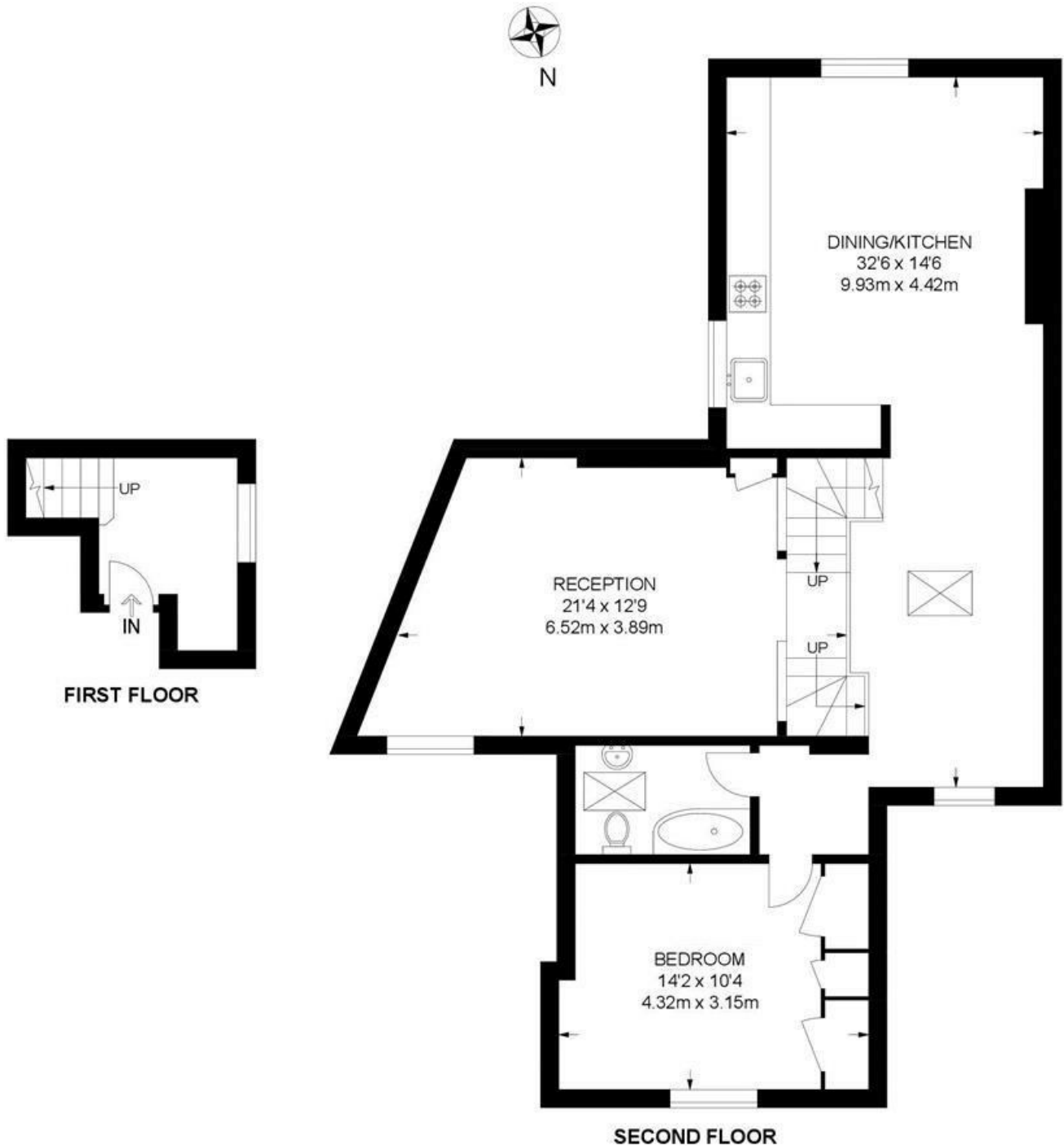


St. Saviours Road, Brixton, SW2

**St Saviours Road, SW2**

**1 Bedroom Flat**

APPROXIMATE GROSS INTERNAL AREA: **916 SQ FT / 85 SQ M**



While we try our very best, floor plans are produced as a guide only and we take no responsibility for the precise accuracy with which any property is represented.



St. Saviours Road, Brixton, SW2

