



Rosebery Road, Clapham, SW2

2 bedroom flat for sale

£645,000

Share of Freehold

Property Details

An attractive two double bedroom, two bathroom split-level Victorian apartment with a private terrace, located in a desirable residential pocket. The fantastic semi-open-plan reception has lofty, vaulted ceilings promoting an airy ambience suited to entertaining or unwinding in front of the characterful fireplace. Glass French doors lead to a pretty terrace, ideal for savouring the Southerly sunlight whilst fresh air breezes through the room. The spacious kitchen is well-equipped with integrated mod-cons and generous storage options. A wrap-around design creates an ergonomic space in which to cook, keeping the dishes neatly tucked out of view of the dining area. Nestled to the rear with leafy views, both bedrooms are doubles of sizeable proportions, set apart on differing floors to offer a level of privacy suited to sharers. One of the bedrooms benefits from an en-suite, the other has the same lofty ceilings as the reception, providing an additional storage nook. Conveniently located, the main bathroom has a double-ended bathtub plus overhead rain shower. Being elevated over the upper the floors brings additional privacy and light.

Features

- Two double bedrooms
- Two bathrooms
- Private South-facing terrace
- Victorian conversion
- Lofty ceilings
- Local amenities nearby
- Walking distance to Clapham, Brixton and Abbeville Village
- Northern and Victoria Lines
- Share of freehold
- Chain-free

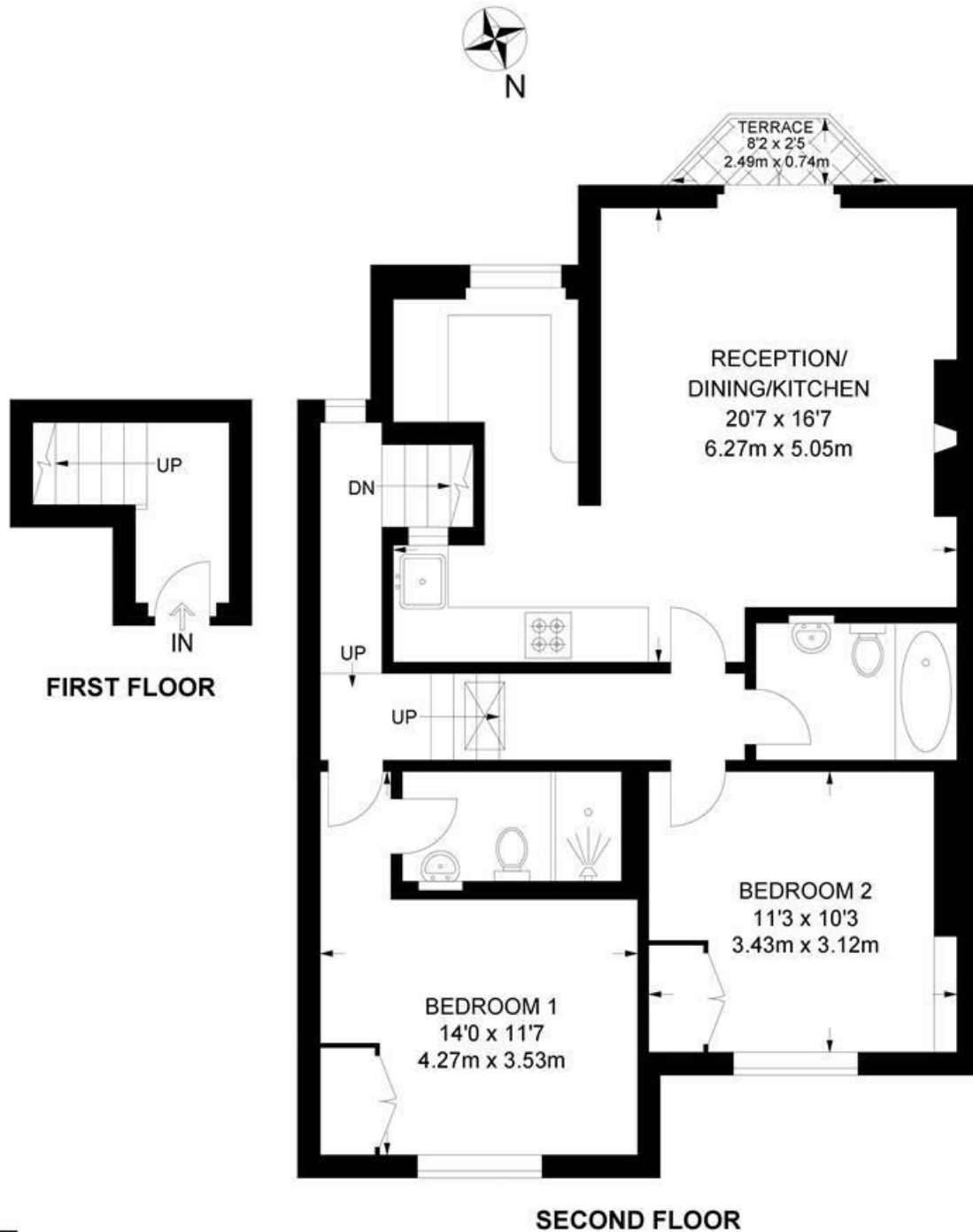
Council tax band D EPC rating E (45)



Rosebery Road, Clapham, SW2

Rosebery Road, SW2
2 Bedroom Flat

APPROXIMATE GROSS INTERNAL AREA: **752 SQ FT / 69.9 SQ M**



While we try our very best, floor plans are produced as a guide only and we take no responsibility for the precise accuracy with which any property is represented.

Rosebery Road, Clapham, SW2

