

**Holmewood Road, SW2**

1 bedroom flat to let

£403 Per Week

Part furnished

Property Details

A fantastic one double bedroom top floor Victorian conversion flat, located on a quiet residential street. This flat is modern, fresh and has an open plan kitchen and reception room that features exposed brick work and large sky lights that flood the room with light. The large double bedroom has a period feature fireplace giving the room plenty of character. A modern family bathroom completes the property. This flat is located a short walk away from multiple transport links including Streatham Hill station and Brixton underground station allowing for easy access to central London.

Features

- One double bedroom
- Modern family bathroom
- Open plan reception and kitchen
- Bright and airy
- Characterful features
- Skylights
- Victorian conversion flat

Council tax band C EPC rating C (69)





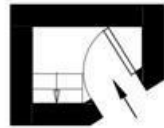
Holmewood Road

1 Bed flat

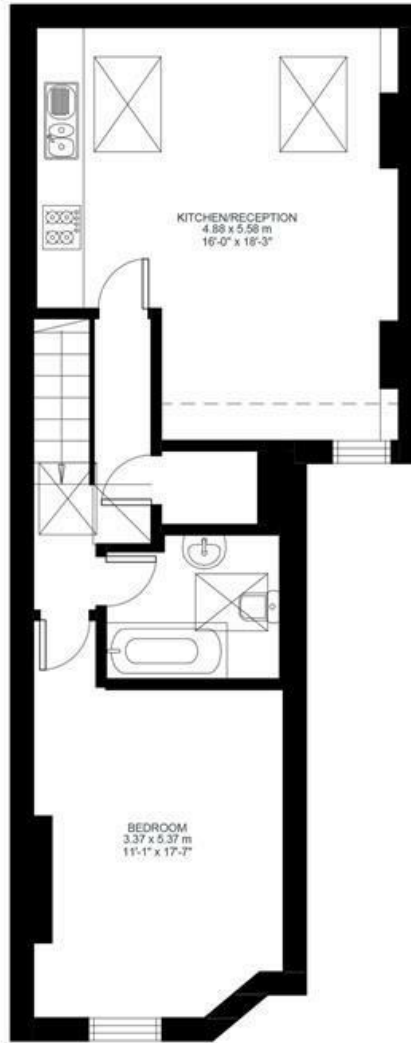
Approx internal area:

586 sqft 54 sqm

While we do try our very best, floor plans are produced as a guide only and we take no responsibility for the precise accuracy with which any property is represented



First Floor Entrance



First Floor



Holmewood Road, SW2

