



**Hemberton Road, Clapham, SW9**

2 bedroom flat - conversion for sale

**£600,000**

Share of Freehold

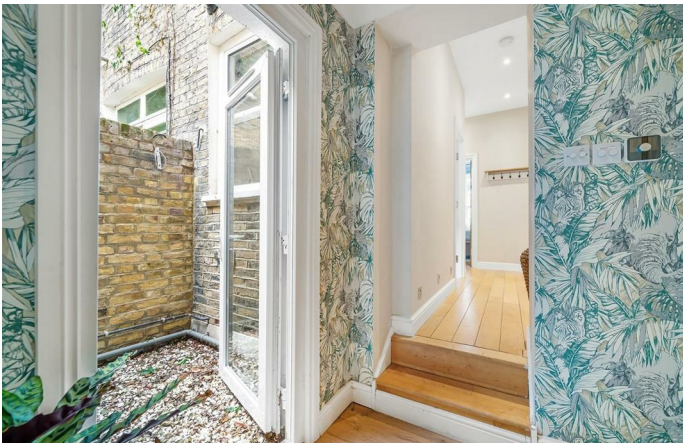
## Property Details

A two bedroom Victorian flat with private garden, on the sought-after Hemberton Road. Lovingly renovated to create a luxuriously beautiful home. Flooded with light, the open-plan reception has space to lounge, dine and cook. Shaker-style kitchen cabinetry offers ample storage, topped with marbled work surfaces. Double doors lead out to the garden, with patio, curved seating and astro lawn for all-year greenery. A separate lightwell is gravelled, with hanging bike storage. The principal bedroom is a grand and spacious double, with a large bay window, ornate corning and a fireplace, plus built-in wardrobes. The second double bedroom has lightwell views, a sash window, fitted wardrobes and drawers under the built-in bed. The hotel style bathroom is designed with low-level lighting, a separate bath and walk-in shower. A large cellar completes the home. Early registration of interest advised.

Council tax band C    EPC rating C (75)

## Features

- Two double bedrooms
- Private garden
- Victorian conversion
- Desirable residential road
- Immaculately presented throughout
- Bright and airy
- Characterful features
- Walking distance to Clapham, Brixton and Stockwell
- Victoria and Northern Lines
- Share of freehold

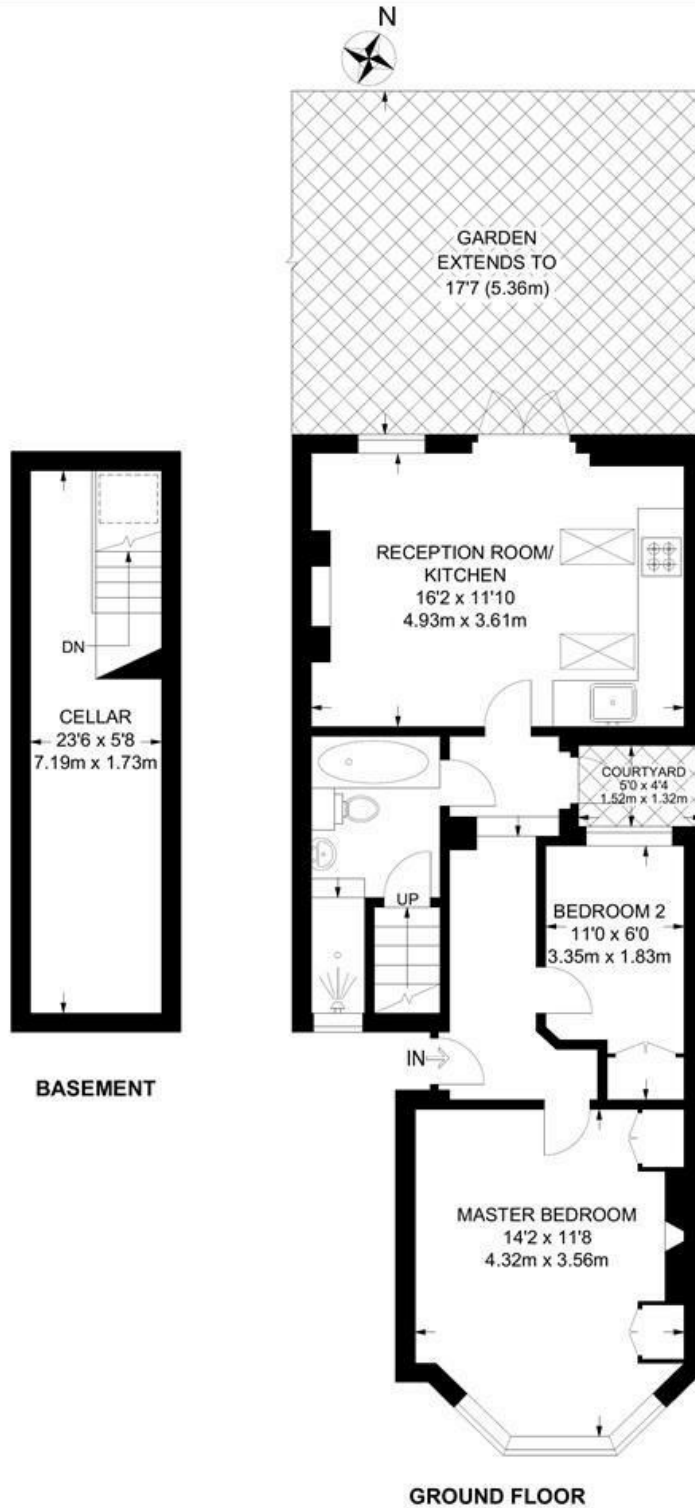


Hemberton Road, Clapham, SW9

**Hemberton Road, SW9**  
**2 Bedroom Flat**

APPROXIMATE GROSS INTERNAL AREA WITH CELLAR: **692 SQ FT / 64.3 SQ M**

APPROXIMATE GROSS INTERNAL AREA WITHOUT CELLAR: **558 SQ FT / 51.8 SQ M**



Hemberton Road, Clapham, SW9

