



Helix Road, Brixton, SW2

1 bedroom flat to let

£350 Per Week

Furnished

Property Details

Striking and immaculate one bedroom flat - situated on the doorstep of beautiful Brockwell Park, just around an eight minute walk away. This stunning property is a Victorian split level top floor flat located on a sought after street. On the lower floor, you are greeted with a lovely double bedroom immersed in natural light. Heading along the hallway is the modern family bathroom. On the upper level, you will find the open plan kitchen/living area which is generous in size. The area comes fully equipped, with modern fittings, hardwood flooring, and space for a dining area. The property is within easy reach of various supermarkets, and the pubs, bars and restaurants of Brixton Hill and Effra Road are all just a short walk away.

Features

- Split Level
- Victorian
- Light and airy
- Furnished
- Good Transport Links
- One bedroom
- Short walk to Brockwell Park

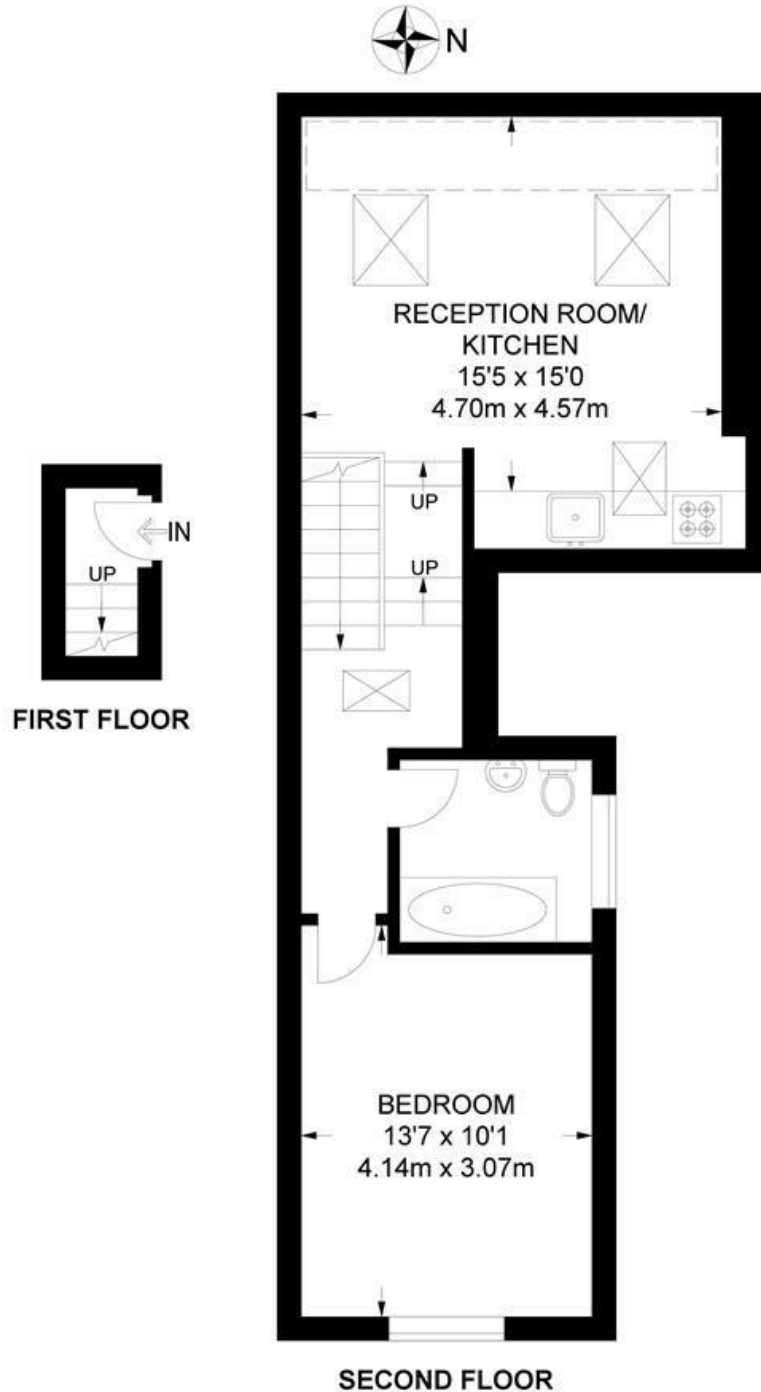
Council tax band C EPC rating C (71)



Helix Road, Brixton, SW2

Helix Road, SW2
1 Bedroom Flat

APPROXIMATE TOTAL INTERNAL AREA: 485 SQ FT / 45 SQ M



While we try our very best, floor plans are produced as a guide only and we take no responsibility for the precise accuracy with which any property is represented.

Helix Road, Brixton, SW2

