

## Hemberton Road, Clapham, SW9

2 bedroom flat - conversion for sale

£675,000

Share of Freehold

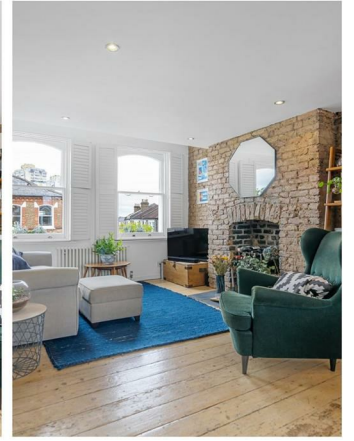
### Property Details

A stunning two double bedroom Victorian flat with private roof terrace. This spectacular apartment retains period features whilst incorporating contemporary finishes. The fabulous living space is a wonderfully bright open-plan room with wooden floors, exposed brickwork and arched sash windows, plus space for a dining table. An industrial-style kitchen has steel worktops wrapping around, adding to the sociable vibe. A staircase leads to a glass door to the large roof terrace. South-facing this glorious suntrap is ideal for BBQs with views of the surrounding gardens and allotments. Both bedrooms are doubles, set to differing floors for a level of privacy. Peacefully arranged over the top floor, the principal bedroom has the proportions for generous built-in storage and a dressing table. Nestled to the rear of the floor below, the second bedroom also has built-in wardrobes and leafy views. The bathroom is equipped with bath and overhead rain shower. The apartment has additional light and privacy due to the elevated position over the upper floors, and a charming staircase meandering through.

Council tax band D    EPC rating D (67)

### Features

- Two double bedrooms
- Large South-facing roof terrace
- Victorian conversion
- Beautifully presented
- Characterful features
- Bright and airy
- Desirable residential road
- Walking distance to Clapham, Brixton and Stockwell
- Victoria and Northern Lines
- Share of freehold

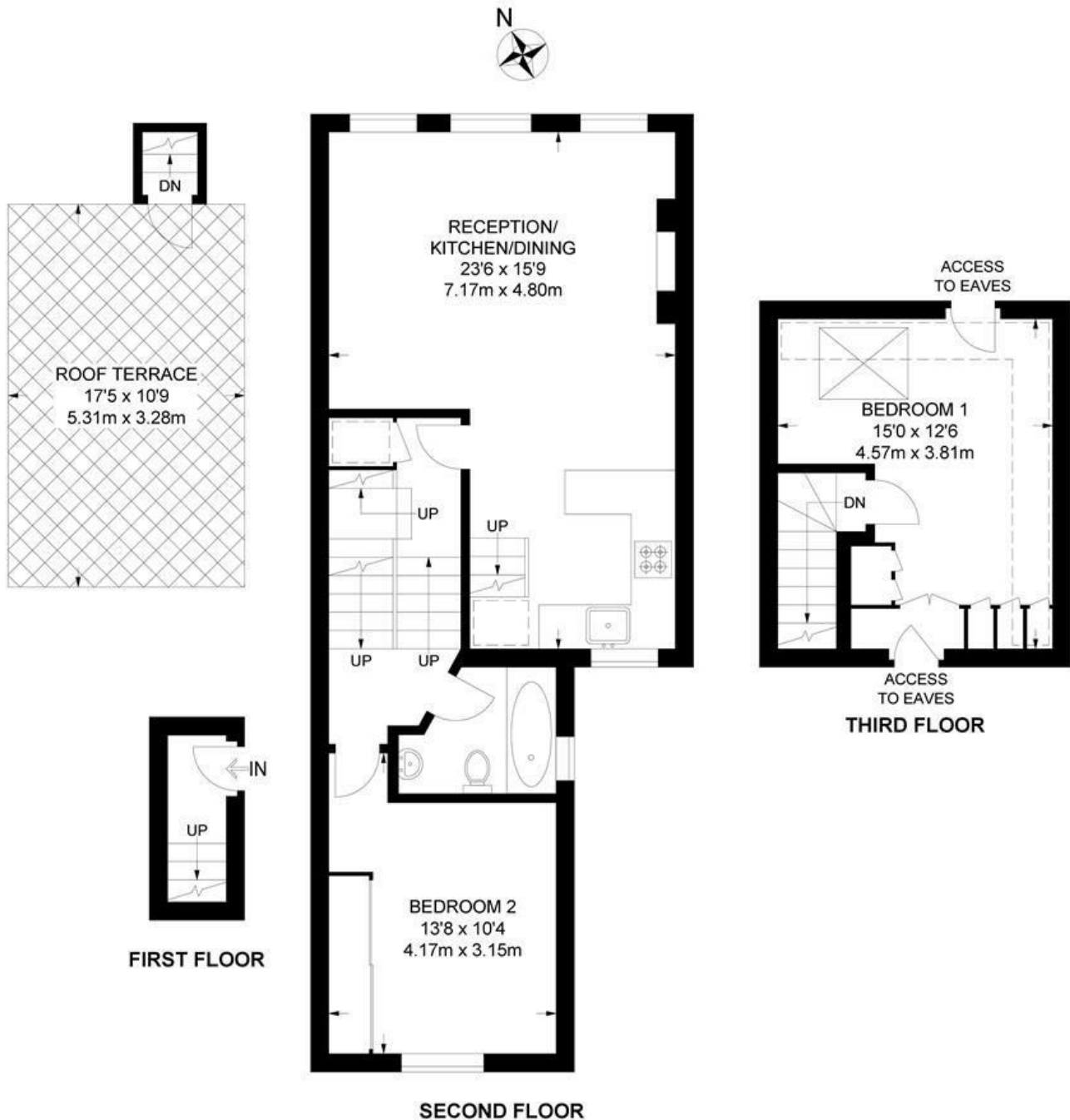




Hemberton Road, Clapham, SW9

**Hemberton Road, SW9**  
**2 Bedroom Flat**

APPROXIMATE GROSS INTERNAL AREA: **775 SQ FT / 72 SQ M**



While we try our very best, floor plans are produced as a guide only and we take no responsibility for the precise accuracy with which any property is represented.

Hemberton Road, Clapham, SW9

