

Blairderry Road, Streatham Hill, SW2

2 bedroom flat - purpose built for sale

£525,000

Leasehold

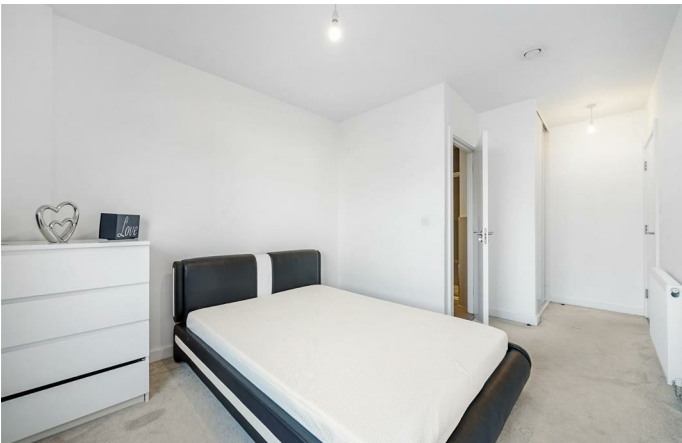
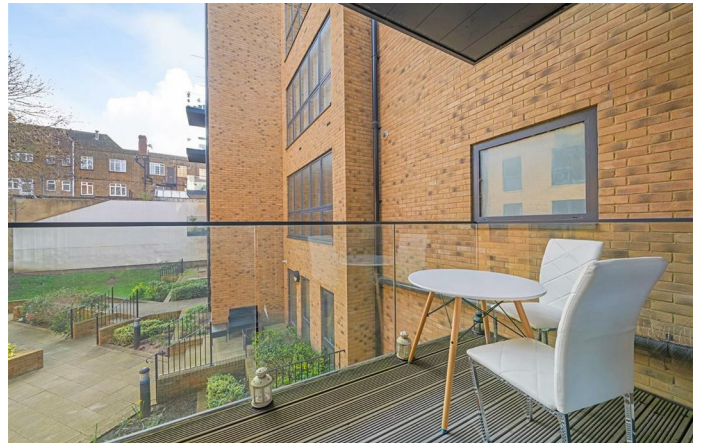
Property Details

A spacious two bedroom, two bathroom apartment with a private terrace. Set in a modern building overlooking the communal gardens with bike storage and high energy efficiency. The expansive open-plan reception is sociable, dine with guests, unwind, or cook. Wrapping around in an ergonomic shape, the integrated kitchen has storage within gloss cabinets, with sleek white surfaces. Large pane windows bathe the room with light, with a door to the terrace. Glass balustrades add to the light flow whilst sheltering, also covered from above the terrace can be used come rain or shine. Providing a lovely outlook from the terrace, the well-maintained communal grounds offer further outdoor options. Both bedrooms are doubles, one with built-in wardrobes and a luxurious ensuite. The main bathroom has a bath tub with overhead shower. A cupboard in the generous entrance hall offers additional storage.

Council tax band D EPC rating B (85)

Features

- Two double bedrooms
- Two bathrooms
- Private terrace plus communal gardens
- Secure modern build
- Over 800 square feet
- Bike storage
- Sought-after location
- Close to amenities
- Streatham Hill station a four-minute walk
- Chain-free

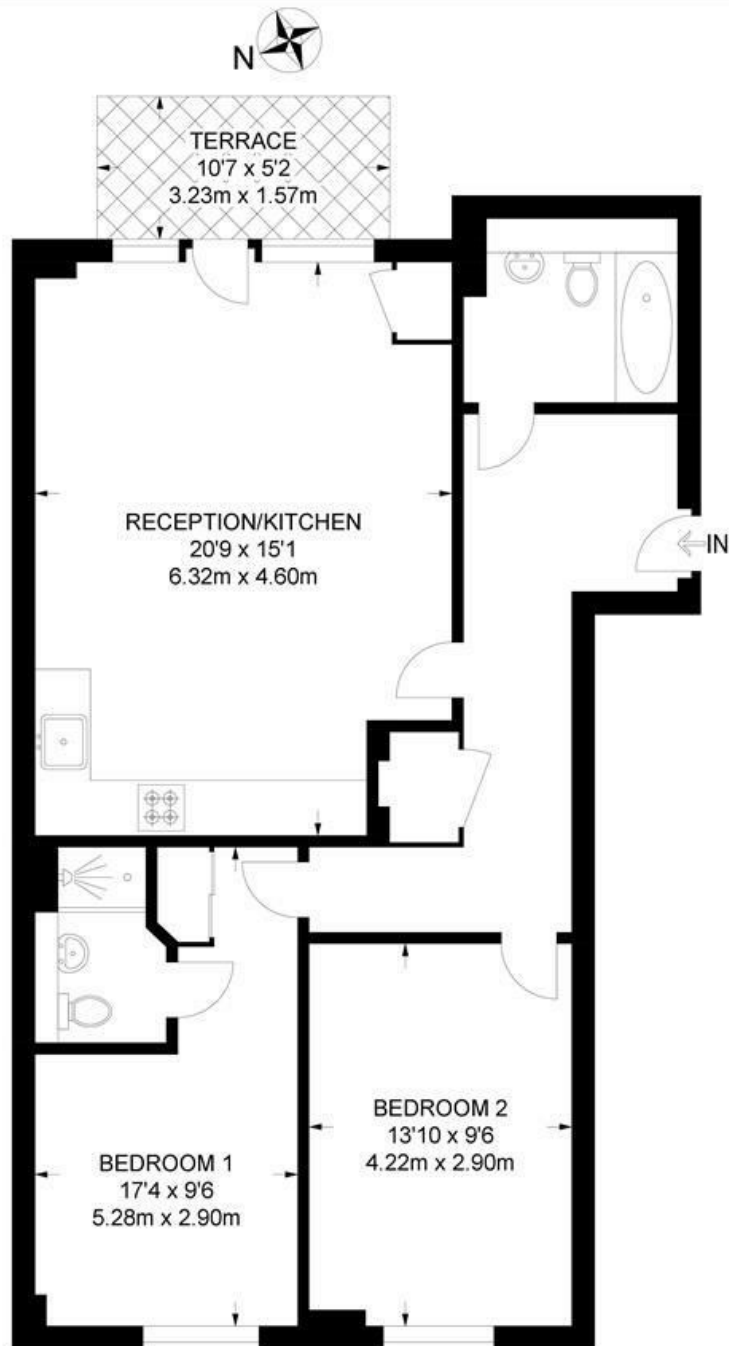




Blairderry Road, Streatham Hill, SW2

Blairderry Road, SW2
2 Bedroom Flat

APPROXIMATE GROSS INTERNAL AREA: **804 SQ FT / 74.7 SQ M**



FIRST FLOOR



While we try our very best, floor plans are produced as a guide only and we take no responsibility for the precise accuracy with which any property is represented.

Blairderry Road, Streatham Hill, SW2

