



**Victoria Rise, Clapham, SW4**

3 bedroom flat - purpose built for sale

**£595,000**

Leasehold

## Property Details

An appealing three double bedroom apartment with a private terrace, split over the second and third floor of a purpose built property. With over 850 square feet, the home feels bright and airy with well-proportioned rooms. The open plan reception is a generous heart of the home, bathed in natural light from dual aspect windows and a large double-glazed sliding doors to the private terrace. A great low-maintenance outside space the terrace is covered for use come rain or shine. The large dine-in kitchen is less than two years old, with generous storage and plentiful worktop space, wrapping around to create a sociable breakfast bar, plus space for a dining table. Upstairs, all three bedrooms are doubles, two of which are particularly spacious with large modern windows and built-in wardrobe space providing a separation between the rooms to provide a level of privacy. The bathroom is well-sized and fitted with both bath and shower, finished with a heated towel rail and a large window for a bright ambience. Completing this versatile home, there is an abundance of storage within various cupboards and under stairs.

## Features

- Three double bedrooms
- Private terrace
- Over 850 square feet
- Split over two floors
- Bright and airy
- Clapham Common a two-minute walk away
- Northern Line a ten-minute stroll
- Local amenities of Clapham Common and Old Town
- Chain-free

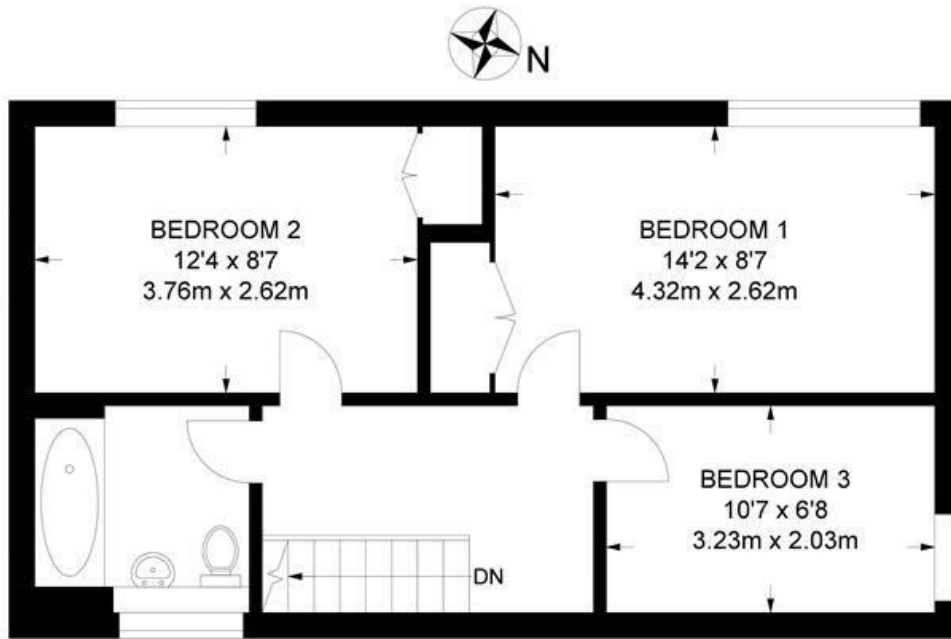
Council tax band C      EPC rating C (72)



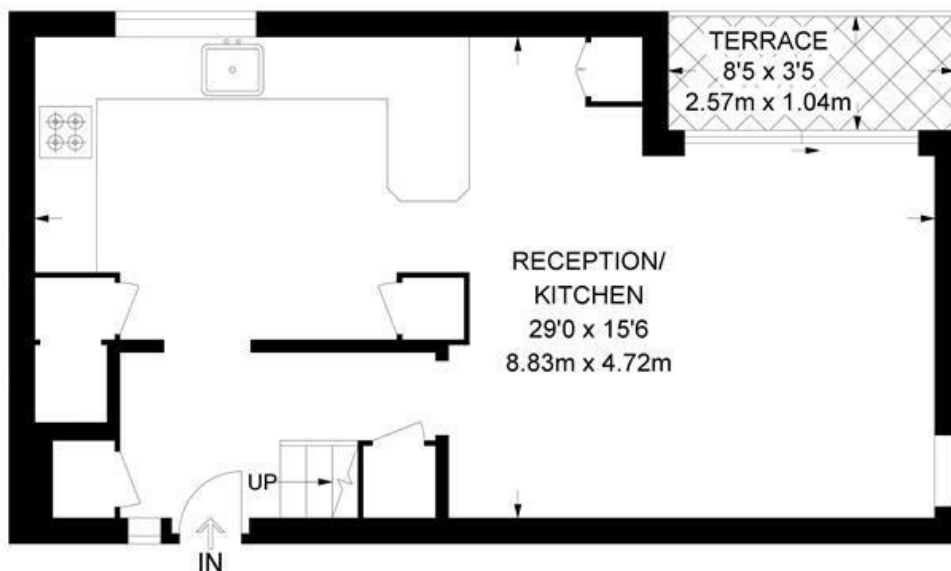
Victoria Rise, Clapham, SW4

**Victoria Rise, SW4**  
**3 Bedroom Flat**

APPROXIMATE GROSS INTERNAL AREA: **867 SQ FT / 80.5 SQ M**



**THIRD FLOOR**



**SECOND FLOOR**



While we try our very best, floor plans are produced as a guide only and we take no responsibility for the precise accuracy with which any property is represented.

Victoria Rise, Clapham, SW4

