



**Pomfret Road, Loughborough Junction, SE5**

2 bedroom flat - conversion for sale

**£550,000**

Share of Freehold

## Property Details

A bright and spacious two double bedroom, two bathroom garden flat, in a Victorian townhouse in a thriving, friendly community. Over 700 square feet of internal space is arranged over two floors, ready to move into straight away with the potential to add your own touches. Set to raised ground floor the reception room is light and airy with comfortable dimensions to unwind. Characterful wooden flooring runs through the room and on into the kitchen. With the proportions for a dining table, the kitchen is newly fitted and relishes garden views. This floor is completed by the first of the two bathrooms, inclusive of a shower. The second bathroom sits downstairs, equipped with a bathtub. Peacefully nestled downstairs, both bedrooms are well-proportioned doubles. The larger is particularly sizeable with built-in storage and a large window adding to the spacious ambience. The second bedroom overlooks the garden, with a patio door. The private garden is low maintenance, enjoy hosting BBQs or relaxing with a book. There is huge potential to create an outdoor haven to your tastes.

Council tax band D    EPC rating C (72)

## Features

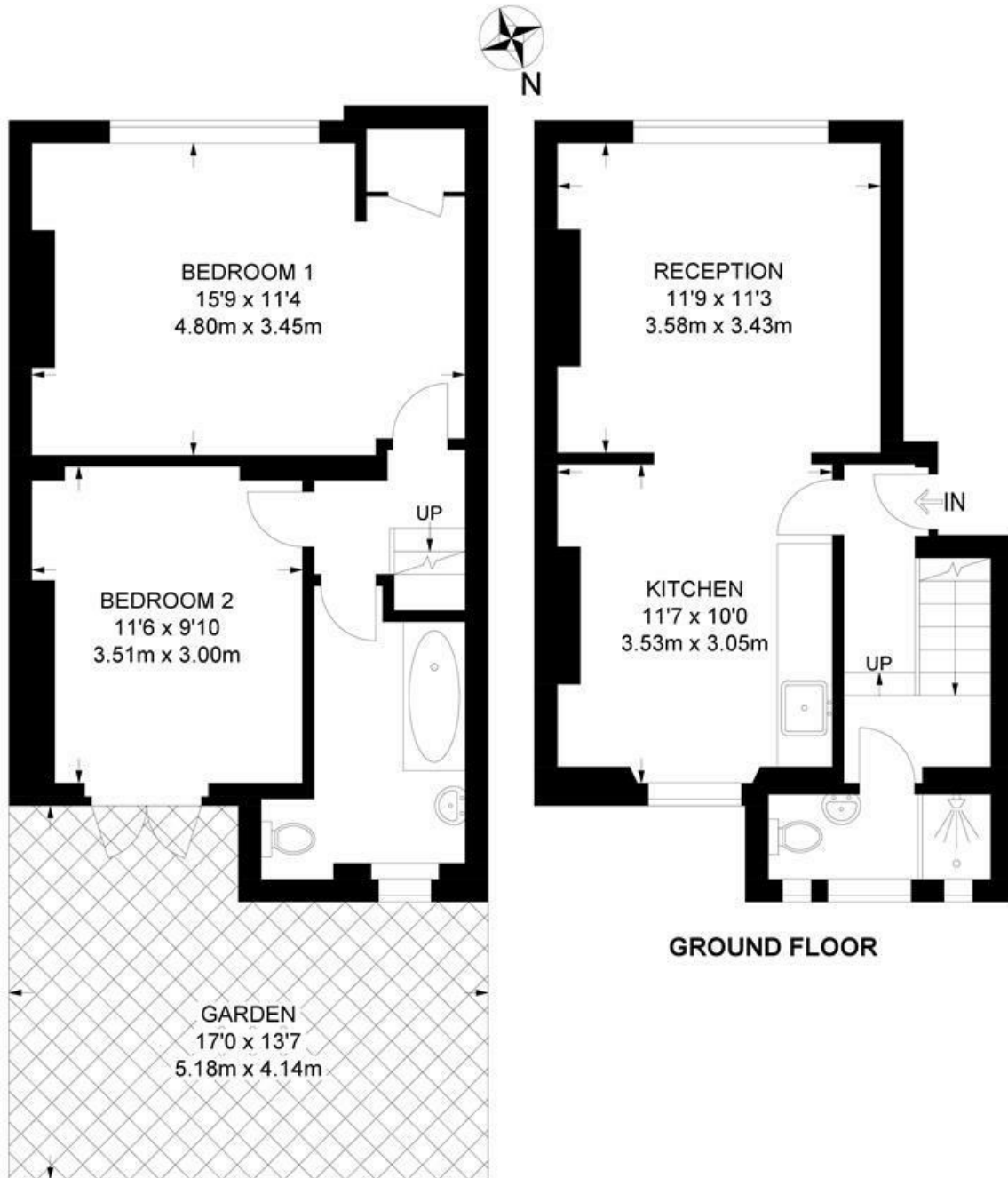
- Two double bedrooms
- Two bathrooms
- Private Garden
- Victorian conversion
- Split over two floors
- Share of freehold
- Ruskin Park an eight-minute walk
- Two-minute walk to the station
- Central Brixton a twelve minute stroll
- Chain-free



Pomfret Road, Loughborough Junction, SE5

**Pomfret Road, SE5**  
**2 Bedroom Flat**

APPROXIMATE GROSS INTERNAL AREA: **734 SQ FT / 68.2 SQ M**



**LOWER GROUND FLOOR**



While we try our very best, floor plans are produced as a guide only and we take no responsibility for the precise accuracy with which any property is represented.

Pomfret Road, Loughborough Junction, SE5

