

**Bellefields Road, Brixton, SW9**

2 bedroom flat - penthouse for sale

**£560,000**

Leasehold

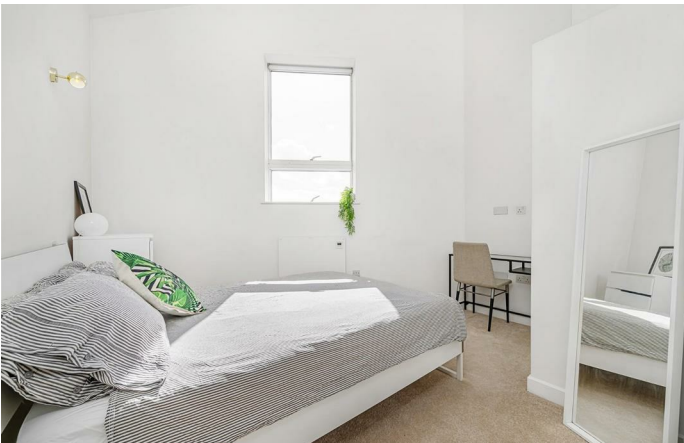
## Property Details

This beautifully spacious apartment is split over two floors and offers nearly 850 square feet of internal living space with ample built-in storage. The heart of this home is the stunning reception and mezzanine-level eat-in kitchen diner, separated by a characterful spiral staircase. Double-height, South-West facing floor-to-ceiling windows are highly impactful and flood the kitchen and reception with natural light, a fantastic entertaining space with plenty of room to cook and dine in style, complete with a contemporary kitchen and plenty of room for a large dining table. The reception area is spacious yet cosy with room for a study area tucked away conveniently beneath the mezzanine level, ideal for anyone who works from home. Glass doors allow for an abundance of natural light and provide access to a fantastic private South-West facing balcony. The two bedrooms are both genuine doubles with fitted wardrobes and fantastic vaulted ceilings. Further benefits include another c. fifty square foot of additional storage space on top of the already generous built in storage, a video entry system and secure communal bike storage.

## Features

- Two double bedrooms
- Penthouse apartment in a modern development
- Split over two floors with stunning views
- Nearly 850 square feet of internal living space
- West facing private terrace
- Generous built-in storage
- Moments from Brixton tube and Brixton Village
- Within a ten-minute walk to Clapham and Stockwell High Streets
- Secure bike storage
- Chain-free

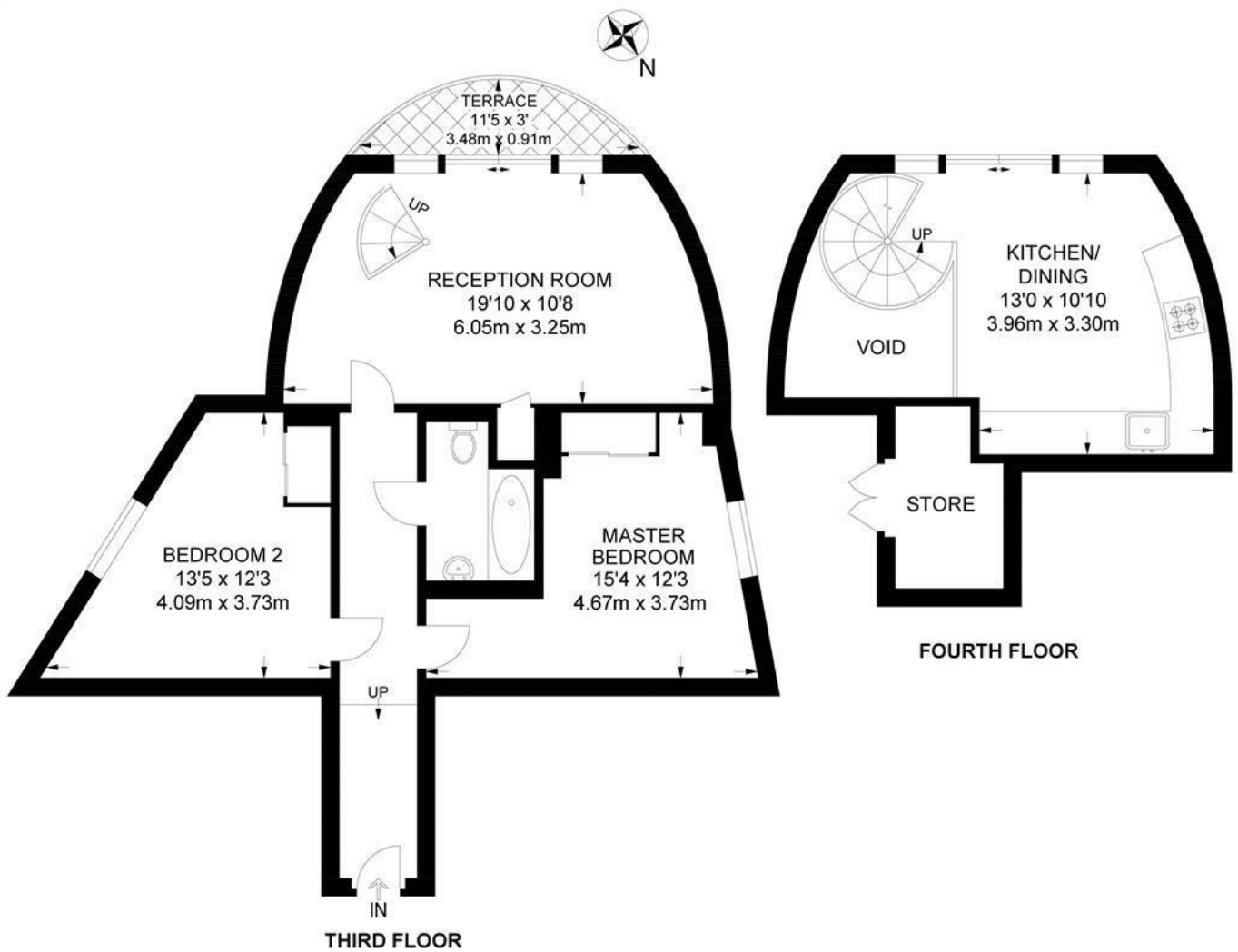
Council tax band E    EPC rating D (68)



Bellefields Road, Brixton, SW9

**Bellefields Road, SW9**  
**2 Bedroom Flat**

APPROXIMATE TOTAL INTERNAL AREA: **833 SQ FT / 77.4 SQ M** - (EXCLUDING STORE)



While we try our very best, floor plans are produced as a guide only and we take no responsibility for the precise accuracy with which any property is represented.

Bellefields Road, Brixton, SW9

