

**Elm Park, Brixton, SW2**

5 bedroom house for sale

**£850,000**

Freehold

## Property Details

This fantastic house offers the exciting opportunity to stamp your own mark on a spacious five-bedroom house, boasting private front and back gardens with front access to the side-return. The ground floor of the property comprises an entrance hall, which leads through to a separate reception facing the front of the property and a double rear reception, adjacent to the kitchen. A downstairs WC is also conveniently located. The first and second floors provide four generous double bedrooms and a fifth room that would be perfect as a guest bedroom, nursery, home office or anything else the purchaser may require. Two contemporary bathrooms are arranged over the upper floors.

**Council tax band E**    **EPC rating D (65)**

## Features

- Five bedrooms
- Two bathrooms
- Almost 1800 square feet of internal space
- Private garden
- End-of-terrace townhouse
- A popular residential road tucked off Brixton Hill.
- Short walk to Brockwell Park
- Central Brixton in easy reach
- Chain-free



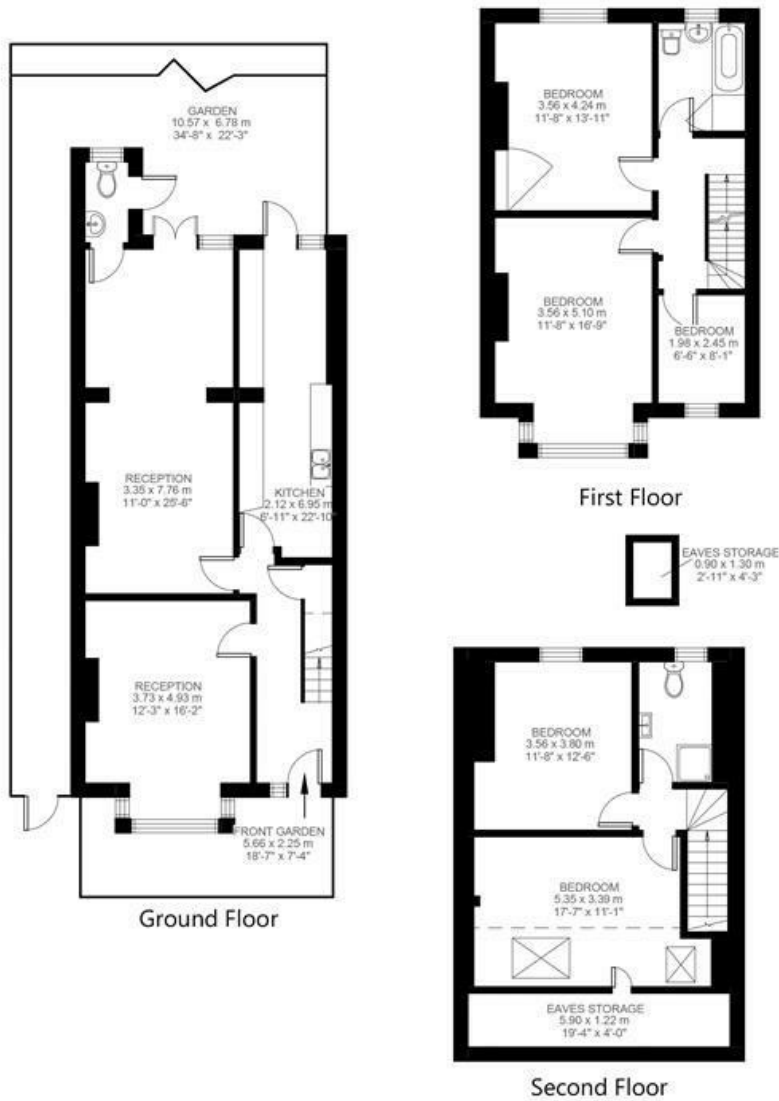
**Elm Park, Brixton Hill, SW2**

**5 Bedroom House**

Approximate internal area: **1790 sqft 166 sqm**

Approximate eaves storage: **90 sqft 8 sqm**

Approximate total internal area: **174 sqm 1877 sqft**



While we do try our very best, floor plans are produced as a guide only and we take no responsibility for the precise accuracy with which any property is represented.

Elm Park, Brixton, SW2

