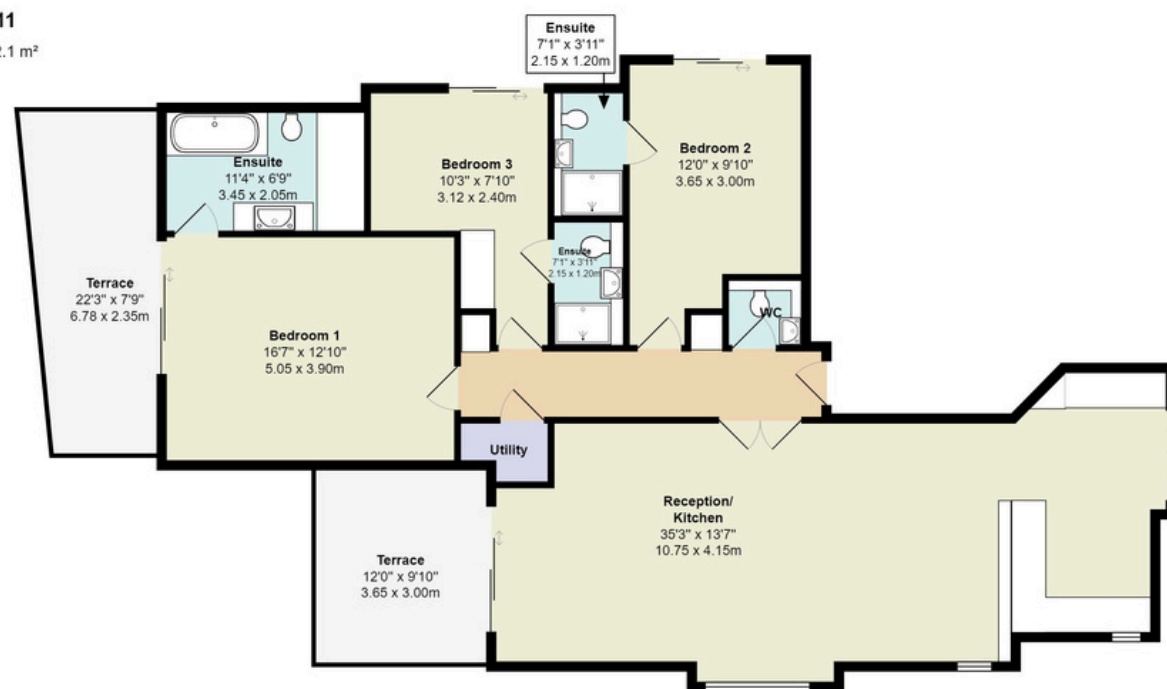


Jonah Court NW11
Total Area: 1422 ft² ... 132.1 m²



Tenure Share of Freehold



1422 sqft / 132.1 m2



3 Bedrooms



3 Bathrooms



Underground Parking

Score	Energy rating	Current	Potential
92+	A		
81-91	B	85 B	85 B
69-80	C		
55-68	D		
39-54	E		
21-38	F		
1-20	G		

Jonah Court, Temple Fortune Lane, NW11

£1,750,000

Jonah Court is a stunning new development nestled in the heart of Temple Fortune offering spacious luxury living. This three bedroom, three en-suite bathroom apartment is finished to a high standard throughout, situated on the ground floor of this impressive 5 apartment development. The accommodation comprises of an open-plan layout with a bright living, dining, and kitchen area. The elegant kitchen features high-end appliances and ample counter space and breakfast bar with dual access to a private terrace and garden. The principle bedroom includes an en-suite bathroom and access to the second terrace, while two additional bedrooms and bathrooms ensure comfort for all. High-quality fixtures and fittings add a touch of luxury throughout with features including underfloor heating, guest W/C, panelled walls, air conditioning, utility room and large private storage room in the basement.

Residents enjoy an on-site concierge service, communal roof terrace ideal for enjoying the summer afternoons, and secure underground parking. Located near trendy cafes, restaurants, shops, and cultural attractions, with excellent transport links for easy commuting.

Don't miss this opportunity. Contact us today to arrange a viewing.

