

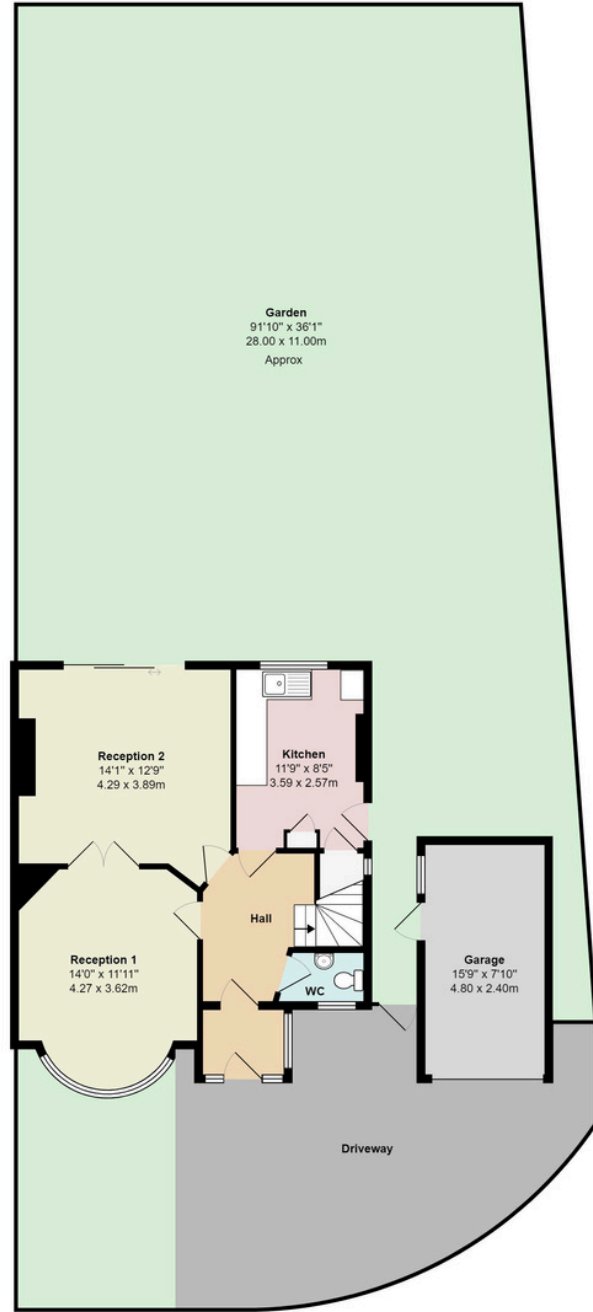


Basing Hill NW11

Total Area: 1127 ft² ... 104.7 m²

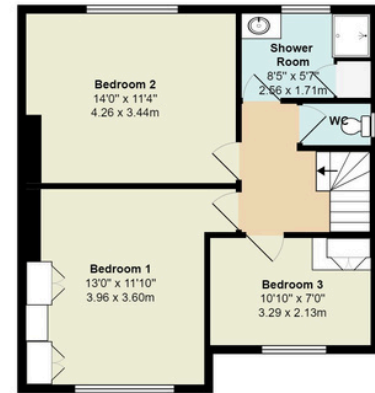
Ground Floor
Area: 588 ft² ... 54.7 m²

First Floor
Area: 539 ft² ... 50.1 m²



Ground Floor

All measurements are approximate and for display purposes only



First Floor



Basing Hill, Golders Green, London, NW11

Guide Price: £1,150,000

This semi-detached house on Basing Hill in Golders Green offers significant potential for extension and development. Currently arranged as a four-bedroom, it requires updating but could be extended into the loft, side, or rear (subject to planning permission).

The ground floor features a porch, entrance hallway, cloakroom, lounge, second reception room, kitchen, and pantry. Upstairs, there are three bedrooms and a shower room.

Externally, there's a front garden with driveway and garage access, plus a spacious rear garden.

Located opposite Basing Hill Park, Basing Hill offers a peaceful residential environment with charming homes and green spaces. Despite its tranquillity, it's close to Golders Green amenities and Central London access via the Northern Line.

Offered with no onward chain, this property presents an exciting opportunity for extension and development. Contact us for more details.

903-905 Finchley Road Golders Green London NW11 7PE

Telephone 020 8381 4970 Email info@moreland.uk.com

Registered Office Unit 8, Alpha Business Park, Travellers Close, Welham Green AL9 7NT Registered in England No. 3663497 Vat No. 701775936

Residential Sales Lettings Full Management Financial Services New Homes





Tenure Freehold



1127 sqft / 104.7 m2



3 Bedroom



1 Bathroom



Drive

Score	Energy rating	Current	Potential
92+	A		
81-91	B		86 B
69-80	C		
55-68	D	64 D	
39-54	E		
21-38	F		
1-20	G		



903-905 Finchley Road Golders Green London NW11 7PE

Telephone 020 8381 4970 Email info@moreland.uk.com

Registered Office Unit 8, Alpha Business Park, Travellers Close, Welham Green AL9 7NT Registered in England No. 3663497 Vat No. 701775936

Residential Sales Lettings Full Management Financial Services New Homes

