



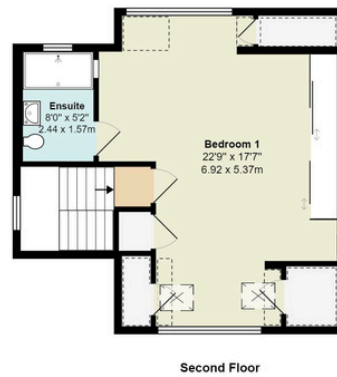
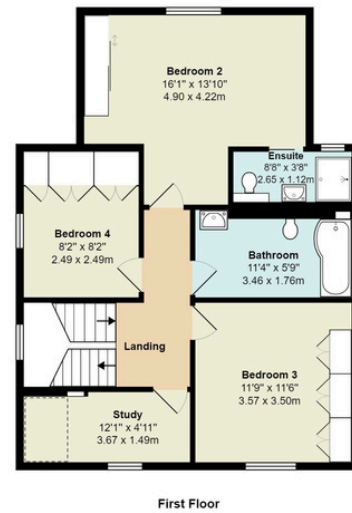
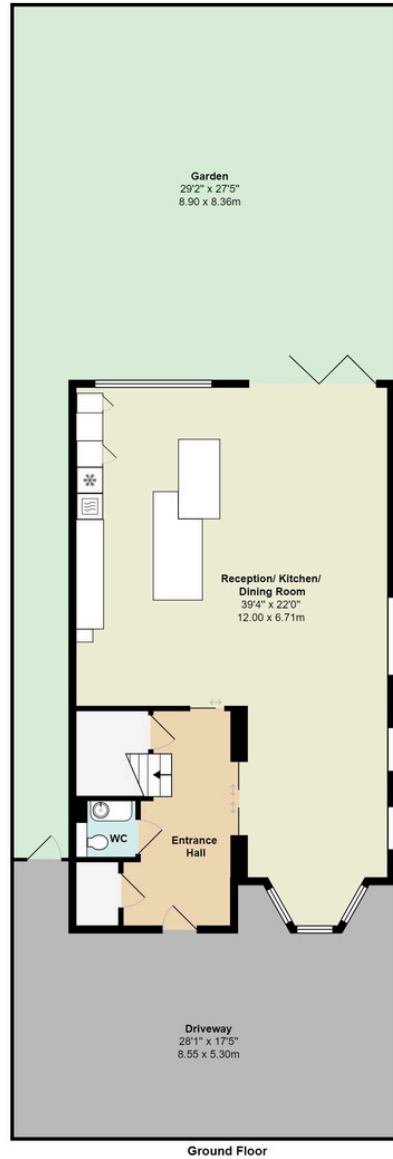
Wentworth Road NW11

Total Area: 2081 ft² ... 193.3 m²

Ground Floor
Area: 900 ft² ... 83.6 m²

First Floor
Area: 713 ft² ... 66.2 m²

Second Floor
Area: 468 ft² ... 43.5 m²



All measurements are approximate and for display purposes only



Wentworth Road, Temple Fortune, NW11

Guide Price Between: £1,450,000 - £1,500,000

- double extension, loft conversion, front porch, driveway. Used over 8 tones of steel.
- Plus, complete re-built. Every wall is new apart from two walls from the old building. This is almost a new built.
- underfloor heating only on ground floor, air condition for all rooms.
- ceiling speakers in every room
- loft/ storage above the rear double bedroom
- solar tiles matching the colour of roof tiles, Tesla style roof tile.
- new staircase
- ADT alarm, cctv and front door
- water softener, 300 litre megaflo boiler, solar iboost.
- German kitchen (Beckermann)
- utility room
- Italian wardrobes
- 2 en-suite shower rooms



903-905 Finchley Road Golders Green London NW11 7PE

Telephone 020 8381 4970 Email info@moreland.uk.com

Registered Office Unit 8, Alpha Business Park, Travellers Close, Welham Green AL9 7NT Registered in England No. 3663497 Vat No. 701775936

Residential Sales

Lettings

Full Management


Financial Services

New Homes





Tenure Freehold

 2081 sqft / 193.3 m2

 5 Bedroom

 3 Bathroom

 Drive

Score	Energy rating	Current	Potential
92+	A		
81-91	B		84 B
69-80	C		
55-68	D	56 D	
39-54	E		
21-38	F		
1-20	G		



903-905 Finchley Road Golders Green London NW11 7PE
 Telephone 020 8381 4970 Email info@moreland.uk.com

Registered Office Unit 8, Alpha Business Park, Travellers Close, Welham Green AL9 7NT Registered in England No. 3663497 Vat No. 701775936
 Residential Sales Lettings Full Management Financial Services New Homes

