

Hampstead Gardens NW11

Total Area: 1769 ft² ... 164.4 m²

Ground Floor

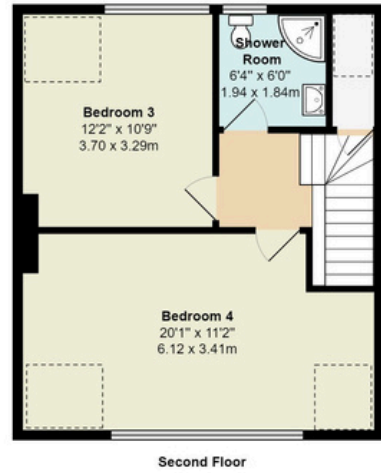
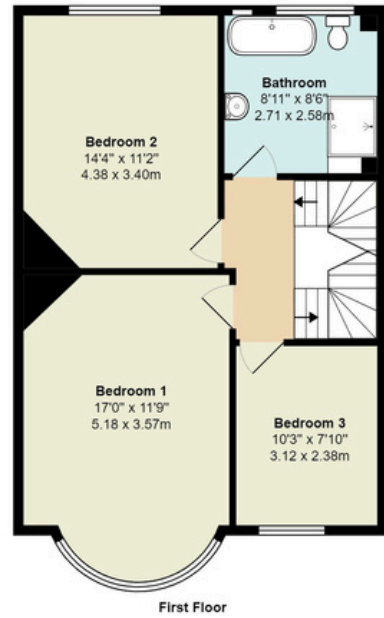
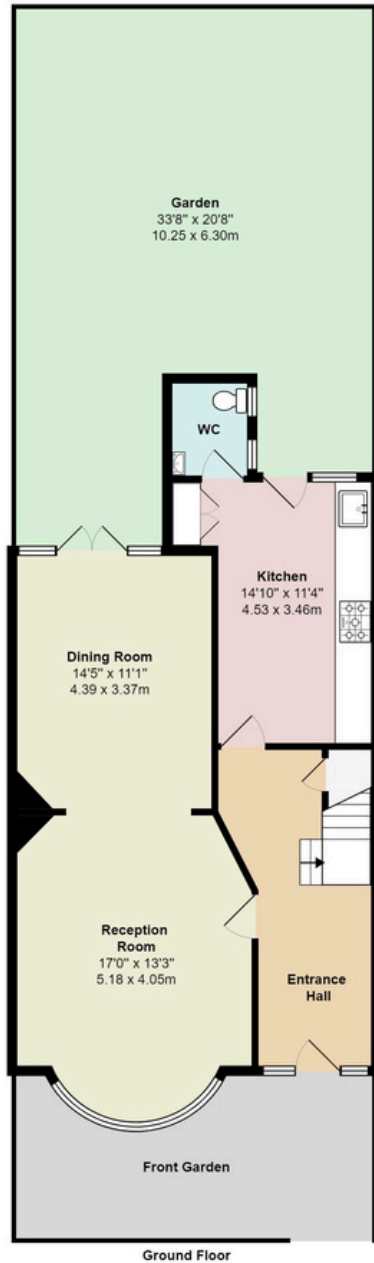
Area: 683 ft² ... 63.5 m²

First Floor

Area: 610 ft² ... 56.6 m²

Second Floor

Area: 476 ft² ... 44.3 m²



All measurements are approximate and for display purposes only

Hampstead Gardens, Hampstead Garden Suburb, NW11

Guide Price: £1,250,000

Welcome to this charming 5-bedroom, 3-bathroom terraced house nestled on Hampstead Gardens, NW11. Boasting a spacious layout and modern amenities, this property offers an inviting ambiance from the moment you step through the door.

As you enter, you're greeted by a large entrance hall, setting the tone for the elegance and comfort that awaits within. To the left, the open-plan living and dining room beckon, providing a seamless space for relaxation and entertainment. The kitchen adjacent to it offers ample room for culinary endeavors, while a convenient downstairs WC adds practicality to the layout.

Venturing upstairs, the first floor hosts three generously sized bedrooms and a well-appointed bathroom, providing comfort and privacy for family members or guests. Ascending to the second floor, you'll discover two additional bedrooms and another bathroom, offering versatility and space for various lifestyle needs.

Outside, a large south-facing garden awaits, providing a serene retreat perfect for outdoor gatherings, gardening enthusiasts, or simply unwinding amidst nature's tranquility. Situated on a quiet street, this residence offers a peaceful atmosphere ideal for those seeking refuge from the hustle and bustle of city life.

With a total area spanning 1769 square feet, this home offers ample space to accommodate your family's needs and lifestyle aspirations. Moreover, its prime location places it conveniently between Golders Green shops and Temple Fortune shops, ensuring easy access to a plethora of amenities, including restaurants, cafes, and retail outlets.

For commuters, the property boasts excellent accessibility to London via Golders Green Tube Station on the Northern Line, facilitating effortless travel to various destinations across the capital.

Don't miss the opportunity to make this Hampstead Gardens gem your new home, where comfort, convenience, and tranquillity harmoniously converge to create an idyllic urban retreat. Schedule a viewing today and experience the epitome of modern living in this delightful abode.



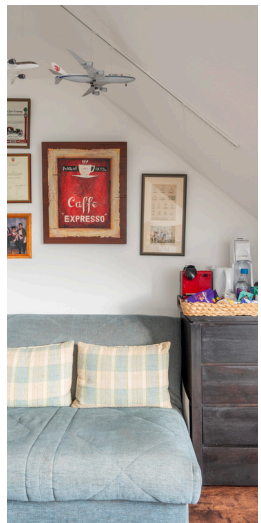
903-905 Finchley Road Golders Green London NW11 7PE

Telephone 020 8381 4970 Email info@moreland.uk.com

Registered Office Unit 8, Alpha Business Park, Travellers Close, Welham Green AL9 7NT Registered in England No. 3663497 Vat No. 701775936

Residential Sales Lettings Full Management Financial Services New Homes





Tenure Freehold



1,765 sq ft / 164.4 m²



5 Bedrooms



3 Bathrooms



Street Parking

Score	Energy rating	Current	Potential
92+	A		
81-91	B		82 B
69-80	C	71 C	
55-68	D		
39-54	E		
21-38	F		
1-20	G		

