



Alexandra Mews
, Tamworth, , B79 7HT

(Offers Over) £150,000

Property Features

- Beautifully presented two-bedroom flat
- A welcoming reception hall
- Fitted kitchen
- A bright and spacious lounge
- A master bedroom with fitted wardrobes
- allocated parking
- Ideal home for first-time buyers
- Located within a well-maintained residential block
- Leasehold

Full Description

Nestled on the third floor of a well-maintained development in the heart of the town centre, this beautifully presented two-bedroom flat offers allocated parking, a welcoming reception hall and generous living spaces.

The property features a bright and spacious lounge, fitted kitchen, a master bedroom with fitted wardrobes, a second bedroom, and a contemporary family bathroom. Brilliantly maintained and move-in ready, this is an ideal home for first-time buyers, professionals, or investors seeking town-centre living with all amenities at your doorstep.

THE FORE

The apartment is located within a well-maintained residential block, set within easy reach of local amenities and transport links.

INTERNAL

RECEPTION HALL

LIVING ROOM

13' 7" x 15' 4" (4.14m x 4.67m)

KITCHEN

8' 10" x 8' 4" (2.69m x 2.54m)

BEDROOM

12' 10" x 8' 10" (3.91m x 2.69m)

BEDROOM

9' 10" x 7' 6" (3m x 2.29m)

BATHROOM

4' 10" x 7' 11" (1.47m x 2.41m)



ANTI MONEY LAUNDERING

In accordance with the most recent Anti Money Laundering Legislation, buyers will be required to provide proof of identity and address to the Taylor Cole Estate Agents once an offer has been submitted and accepted (subject to contract) prior to Solicitors being instructed.

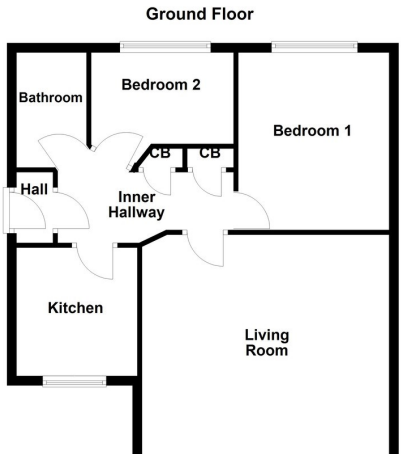
TENURE

We have been advised that this property is leasehold however, prospective buyers are advised to verify the position with their solicitor / legal representative.

VIEWING

By prior appointment with Taylor Cole Estate Agents on the contact number provided.





Score	Energy rating	Current	Potential
92+	A		
81-91	B		
69-80	C	72 C	73 C
55-68	D		
39-54	E		
21-38	F		
1-20	G		

8 Victoria Road
Tamworth
Staffordshire
B79 7HL

www.taylorcole.co.uk
sales@taylorcole.co.uk
01827 311412

Agents Note: Whilst every care has been taken to prepare these sales particulars, they are for guidance purposes only. All measurements are approximate are for general guidance purposes only and whilst every care has been taken to ensure their accuracy, they should not be relied upon and potential buyers are advised to recheck the measurements