

Callaghans

Independent Estate Agents, Surveyors, Valuers and Mortgage Brokers

26 Gorsey Road,
Manchester, M22 9HP



£200,000

Three Bedrooms
Front and Rear Gardens
Quiet Cul-De-Sac
White Gloss Kitchen
Downstairs Toilet
Popular Location

Callaghans Estate Agents
46 Church Road, Gatley, SK8 4NQ
Telephone: 0161 491 4000, Fax: 0161 491 55 44
Website: www.callaghansltd.com Email: admin@callaghansltd.com

Callaghans are pleased to offer this spacious mid-terrace property, nestled in a peaceful cul-de-sac, this spacious residence, is perfect for families or those seeking extra room to breathe. Step inside and be greeted by a bright lounge featuring a large bay window that fills the space with natural light. The heart of the home is the kitchen, thoughtfully designed with sleek white floor and wall units, offering ample space for all your appliances. Enjoy the convenience of a downstairs toilet located next to the rear door, making daily life that much easier. Upstairs, you'll find three well-proportioned bedrooms that provide comfort and versatility for your family's needs. The modern family bathroom boasts an elegant suite and an over-bath shower, ensuring you have everything you need for relaxation after a long day. With front and rear gardens to enjoy outdoor living, this property truly has it all. Don't miss out on this fantastic opportunity! Contact Callaghans today to arrange a viewing and take the first step toward making this beautiful house your new home.

Lounge 17' 2" x 11' 6" (5.22m x 3.51m)

Kitchen 8' 10" x 10' 8" (2.7m x 3.25m)

Downstairs Toilet 2' 9" x 4' 11" (0.84m x 1.51m)

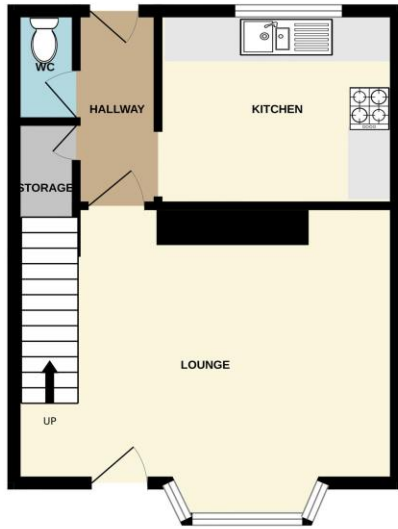
Bedroom One 12' 11" x 11' 9" (3.94m x 3.59m)

Bedroom Two 8' 11" x 12' 9" (2.73m x 3.88m)

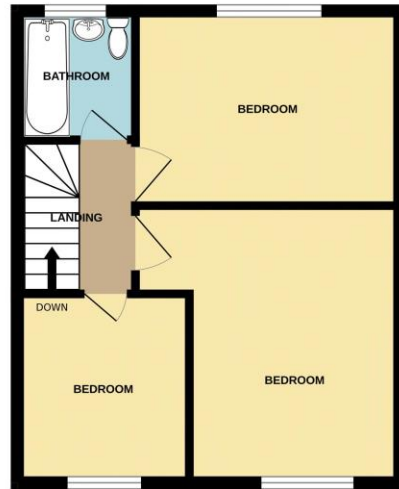
Bedroom Three 8' 7" x 7' 8" (2.61m x 2.33m)

Family Bathroom 5' 11" x 4' 11" (1.81m x 1.49m)

GROUND FLOOR
369 sq.ft. (34.2 sq.m.) approx.



1ST FLOOR
369 sq.ft. (34.3 sq.m.) approx.



TOTAL FLOOR AREA: 738 sq.ft. (68.6 sq.m.) approx.

Whilst every attempt has been made to ensure the accuracy of the floorplan contained here, measurements of doors, windows, rooms and any other items are approximate and no responsibility is taken for any error, omission or mis-statement. This plan is for illustrative purposes only and should be used as such by any prospective purchaser. The services, systems and appliances shown have not been tested and no guarantee as to their operability or efficiency can be given.
Made with Metropix 6/2025

Disclaimer:

These particulars, whilst believed to be accurate are set out as a general guideline only or guidance and do not constitute any part of an offer or contract. Intending purchasers should not rely on them as statements of representation or fact, but must satisfy themselves by inspection or otherwise as to their accuracy. Please note that we have not tested any apparatus, equipment, fixtures, fittings or services, including gas central heating and so cannot verify they are in working order or fit for their purpose. Further more solicitors should confirm movable items described in the sales particulars are, in fact included in the sale since circumstances do change during marketing or negotiations. Although we try to ensure accuracy, measurements used in this brochure may be approximate. Therefore if intending purchasers need accurate measurements to order carpeting or to ensure existing furniture will fit, they should take such measurements themselves. **YOUR HOME IS AT RISK IF YOU DO NOT KEEP UP REPAYMENTS ON A MORTGAGE OR OTHER LOAN SECURED ON IT**