

Callaghans

Independent Estate Agents, Surveyors, Valuers and Mortgage Brokers

5 Drayton Drive,
Cheadle, SK8 3LE



£500,000

**Stylish Detached
Three Double Bedrooms
Extra Downstairs Office/Bedroom
Extended Showroom Kitchen
Gardens, Garage and Driveway
Modern Bathroom
Freehold
Council Band E**

Callaghans Estate Agents
46 Church Road, Gatley, SK8 4NQ
Telephone: 0161 491 4000, Fax: 0161 491 55 44
Website: www.callaghansltd.com Email: admin@callaghansltd.com

Imagine stepping into a world where the cosmopolitan allure of New York meets the serene comfort of a detached Heald Green home. This extended property offers just that, with a front lounge and dining room bathed in natural light from a large bay window. The heart of the home is the extended dining kitchen, boasting a New York-themed feature wall, where one can whip up a meal while gazing at the iconic skyline. Cream shaker cabinets and a generous island with an induction hob make the kitchen both stylish and functional. The seamless transition through patio doors reveals a spacious garden, complete with a tranquil pond and patio—perfect for alfresco dining or simply enjoying the outdoors. Another set of patio doors leads to a long rear lounge, complete with a feature snug fireplace, creating an inviting space for relaxation. Upstairs, the modern family bathroom features tiled walls, a contemporary suite, and a corner shower, alongside a separate WC for added convenience. Each of the three bedrooms is a double, offering ample space for family and guests alike. A brick garage and a private driveway ensure plenty of parking. This charming residence is more than just a house; it's a sanctuary that promises a blend of excitement and tranquillity, making it your ideal family home.

Dining Room 12' 10" x 10' 11" (3.91m x 3.33m)

Lounge 22' 6" x 11' 1" (6.86m x 3.39m)

Kitchen 17' 6" x 16' 10" (5.33m x 5.13m)

Downstairs Toilet 2' 7" x 5' 5" (0.8m x 1.66m)

Utility room 4' 4" x 7' 4" (1.31m x 2.24m)

Downstairs Office/Bedroom 7' 11" x 7' 4" (2.42m x 2.24m)

Family Bathroom 7' 4" x 6' 9" (2.23m x 2.05m)

Bedroom One 12' 10" x 11' 0" (3.92m x 3.35m)

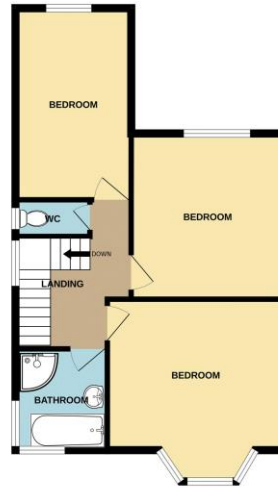
Bedroom Two 11' 1" x 12' 0" (3.39m x 3.66m)

Bedroom Three 13' 11" x 8' 0" (4.23m x 2.44m)

GROUND FLOOR
902 sq.ft. (83.8 sq.m.) approx.



1ST FLOOR
537 sq.ft. (49.9 sq.m.) approx.



TOTAL FLOOR AREA - 1440 sq.ft. (133.7 sq.m.) approx.

Whilst every attempt has been made to ensure the accuracy of the floorplan contained here, measurements of doors, windows, doors and any other items are approximate and no responsibility is taken for any error, omission or mis-statement. This plan is for illustrative purposes only and should be used as such by any prospective purchaser. The services, systems and appliances shown have not been tested and no guarantee as to their operability or efficiency can be given.
Made with Metropax i2024

Disclaimer:

These particulars, whilst believed to be accurate are set out as a general guideline only or guidance and do not constitute any part of an offer or contract. Intending purchasers should not rely on them as statements of representation or fact, but must satisfy themselves by inspection or otherwise as to their accuracy. Please note that we have not tested any apparatus, equipment, fixtures, fittings or services, including gas central heating and so cannot verify they are in working order or fit for their purpose. Further more solicitors should confirm movable items described in the sales particulars are, in fact included in the sale since circumstances do change during marketing or negotiations. Although we try to ensure accuracy, measurements used in this brochure may be approximate. Therefore if intending purchasers need accurate measurements to order carpeting or to ensure existing furniture will fit, they should take such measurements themselves. **YOUR HOME IS AT RISK IF YOU DO NOT KEEP UP REPAYMENTS ON A MORTGAGE OR OTHER LOAN SECURED ON IT**