

Callaghans

Independent Estate Agents, Surveyors, Valuers and Mortgage Brokers

30 Hilton Road,
Manchester, M22 4ZD



£270,000

**Stylish Extended Mid-Mews
Attractive Sun-Room and Patio.
Two Double Bedrooms
Shaker Kitchen
Showroom Bathroom
Driveway
Leasehold
Council Band C**

Callaghans Estate Agents
46 Church Road, Gatley, SK8 4NQ
Telephone: 0161 491 4000, Fax: 0161 491 55 44
Website: www.callaghansltd.com Email: admin@callaghansltd.com

Stylish Extended Mid-Mews property. Callaghans are pleased to offer for sale this elegant modern mews, on a popular Estate in Sharston. The property is in move in condition and would make a great first home. Set back from the road, with a double driveway this a property full of extensive charm. The property is open plan and has been tastefully extended with a sunroom at the rear. The welcoming lounge has open stairs and a feature fireplace ideal to relax or receive friends of an evening. This leads into the kitchen, dining area with modern shaker style Grey floor and wall units, with plenty of worktop creating a good entertaining space. Beyond the kitchen is the sunroom with patio doors into the spacious deck patio garden. On the first floor is the stylish tiled bathroom with modern suite and walk in shower. The bedrooms are both double finishing off this attractive property. Given this properties location and quality we expect a lot of interest, Contact Callaghans now to arrange your viewing.

Lounge 13' 7" x 17' 3" (4.13m x 5.26m)

Kitchen/Diner 13' 6" x 7' 11" (4.11m x 2.42m)

Sun Room 11' 9" x 9' 7" (3.57m x 2.92m)

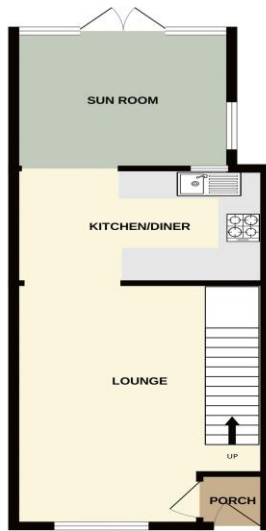
Family Bathroom 8' 5" x 9' 7" (2.57m x 2.92m)

Bedroom One 10' 3" x 11' 6" (3.13m x 3.51m)

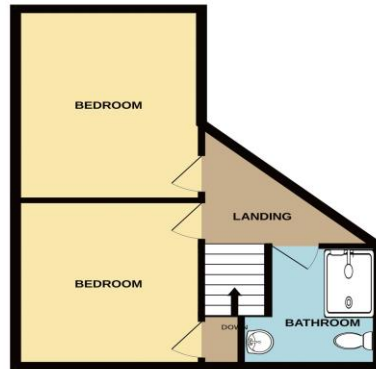
Bedroom Two 13' 6" x 9' 9" (4.12m x 2.96m)

**Callaghans Estate Agents
46 Church Road, Gatley, SK8 4NQ
Telephone: 0161 491 4000, Fax: 0161 491 55 44
Website: www.callaghansltd.com Email: admin@callaghansltd.com**

GROUND FLOOR
450 sq.ft. (41.8 sq.m.) approx.



1ST FLOOR
369 sq.ft. (34.3 sq.m.) approx.



TOTAL FLOOR AREA: 819 sq.ft. (76.1 sq.m.) approx.

Whilst every attempt has been made to ensure the accuracy of the floorplan contained here, measurements of doors, windows, rooms and any other items are approximate and no responsibility is taken for any error or omission in the measurements. This plan is for illustrative purposes only and should be used as a guide only. Intending purchasers should confirm measurements of doors, windows, rooms and any other items are approximate and no responsibility is taken for any error or omission in the measurements. The services, systems and appliances shown have not been tested and no guarantee is given as to their operability or efficiency over time.
Made with Metropack ©2024

Disclaimer:

These particulars, whilst believed to be accurate are set out as a general guideline only or guidance and do not constitute any part of an offer or contract. Intending purchasers should not rely on them as statements of representation or fact, but must satisfy themselves by inspection or otherwise as to their accuracy. Please note that we have not tested any apparatus, equipment, fixtures, fittings or services, including gas central heating and so cannot verify they are in working order or fit for their purpose. Further more solicitors should confirm movable items described in the sales particulars are, in fact included in the sale since circumstances do change during marketing or negotiations. Although we try to ensure accuracy, measurements used in this brochure may be approximate. Therefore if intending purchasers need accurate measurements to order carpeting or to ensure existing furniture will fit, they should take such measurements themselves. **YOUR HOME IS AT RISK IF YOU DO NOT KEEP UP REPAYMENTS ON A MORTGAGE OR OTHER LOAN SECURED ON IT**