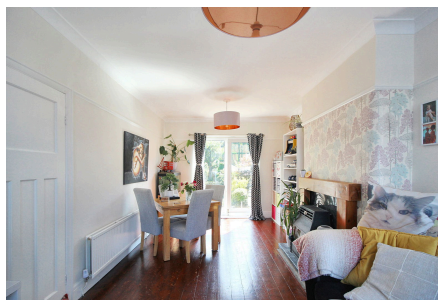


29 The Circuit, Edgeley, Stockport, SK3 9RN

£275,000

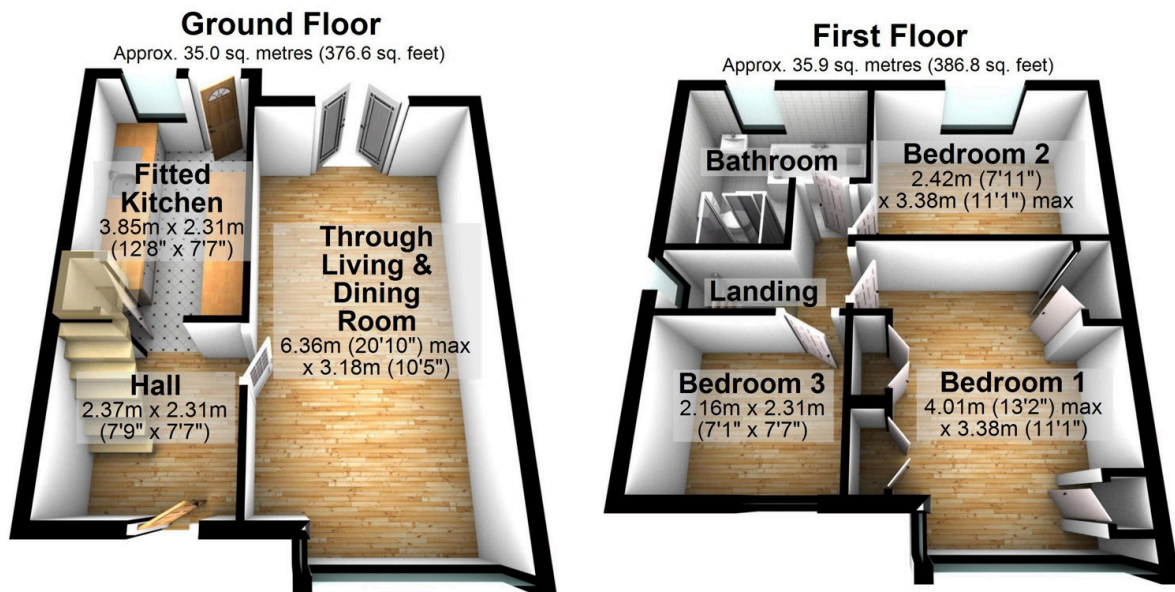
🛏 3 🚿 1 🚗 1



Situated in a well-established and convenient residential area, this three-bedroom semi-detached family home offers a blend of traditional and modern comfort. This property is within easy reach of local shops, schools, motorway access, and Stockport train station. The property offers light and airy accommodation, including a through living/dining room. There is a modern fitted kitchen, three bedrooms, and a family bathroom with four-piece suite. Perhaps, the outstanding feature of this home is the stunning, large, and very private two-tiered garden. The lower tier boasts a well-maintained lawn, perfect for children to play. Ascend to the raised seating area, an ideal spot for al fresco dining and summer barbeques. The garden is not directly overlooked from the rear, providing a sense of seclusion and privacy.

Key Features

- Well presented traditional semi detached home
- Convenient location close to shops, schools, motorway and station
- Through living/dining room
- Three bedrooms
- Gas central heating and double glazing
- Light and airy family accommodation
- Stunning large and private lawned rear garden
- Modern fitted kitchen
- Bathroom with four piece suite
- Viewing highly recommended



Total area: approx. 70.9 sq. metres (763.3 sq. feet)