

63 Deane Avenue, Cheadle, SK8 2DN

£265,000

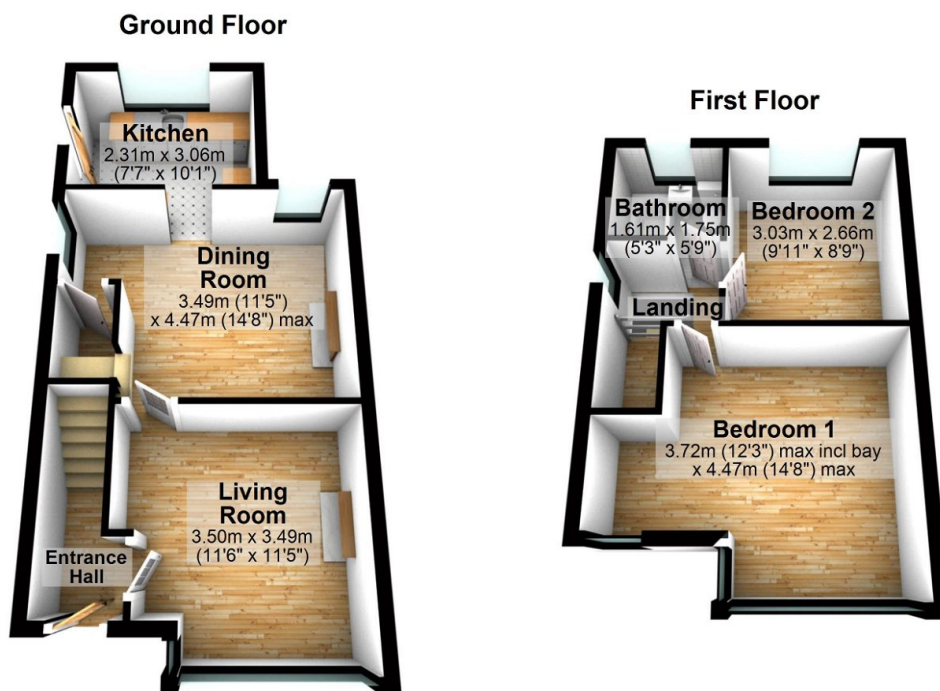
🛏 2 🚿 1 🚗 2



This recently modernised end quasi semi detached house would make a wonderful starter home, but also provide the longer term opportunity to extend as required. The property stands on a magnificent large plot with a fantastic lawned garden to the side and rear, on a quiet cul de sac, on the highly regarded Boundary estate, which is popular with young families due to the proximity to shops, good schools and access to the motorway. The property has just been updated by the current owners and includes an entrance hall, front living room, separate sitting/ dining room, a newly fitted kitchen, two double bedrooms and a new bathroom with White suite. Other salient features include a new central heating system and boiler and the property has been rewired. In addition, there is on street parking at the front.

## Key Features

- Recently modernised end quasi semi detached house
- Close to local shops, good schools and motorway access
- Two large bedrooms
- New fitted kitchen and bathroom
- On street parking
- Quiet cul de sac in sought after location popular with young families
- Magnificent large plot with extensive garden and huge scope to extend
- Two separate reception rooms
- New central heating system and rewired
- Superb, ready to move into starter home. Viewing recommended.



Total area: approx. 66.9 sq. metres (719.8 sq. feet)