



## DEFOE HOUSE, LONDON, EC2Y 8ND

£760 Per Week

2 Bedrooms | 1 Bathrooms | To Let

### Property Features

- Two Bedroom
- Furnished
- Original Kitchen
- Close to Barbican Arts Centre
- Available January 2026
- Type 21
- Re Fitted Thompson Brothers Bathroom
- Fifth Floor
- Close to Elizabeth Line and Barbican Tube Station

This TWO Bedroom (type 21) furnished flat has a bright and airy feel, an original Barbican kitchen and reception room, Re-Fitted Thompson Brothers Bathroom and two bedrooms. The reception room has a full width window with a sliding door leading to the southerly facing balcony/fire exit and views over the Barbican residents' gardens. Available JANUARY 2026.

Barbican tube station (Circle, Hammersmith & City Lines), Moorgate (Northern Line), St Paul's (Central Line) Mansion House (District Line) and the ELIZABETH LINE Station, Farringdon all within a short walking distance. Waitrose, Marks & Spencer and Tesco are close at hand. Defoe House is situated in the middle of the Barbican Estate within walking distance of the Barbican Arts Centre with its cinema, art gallery, concert hall, restaurants, bars and cafes. The Barbican Estate was Grade II-listed in 2001 in recognition of its contribution to London's urban landscape.

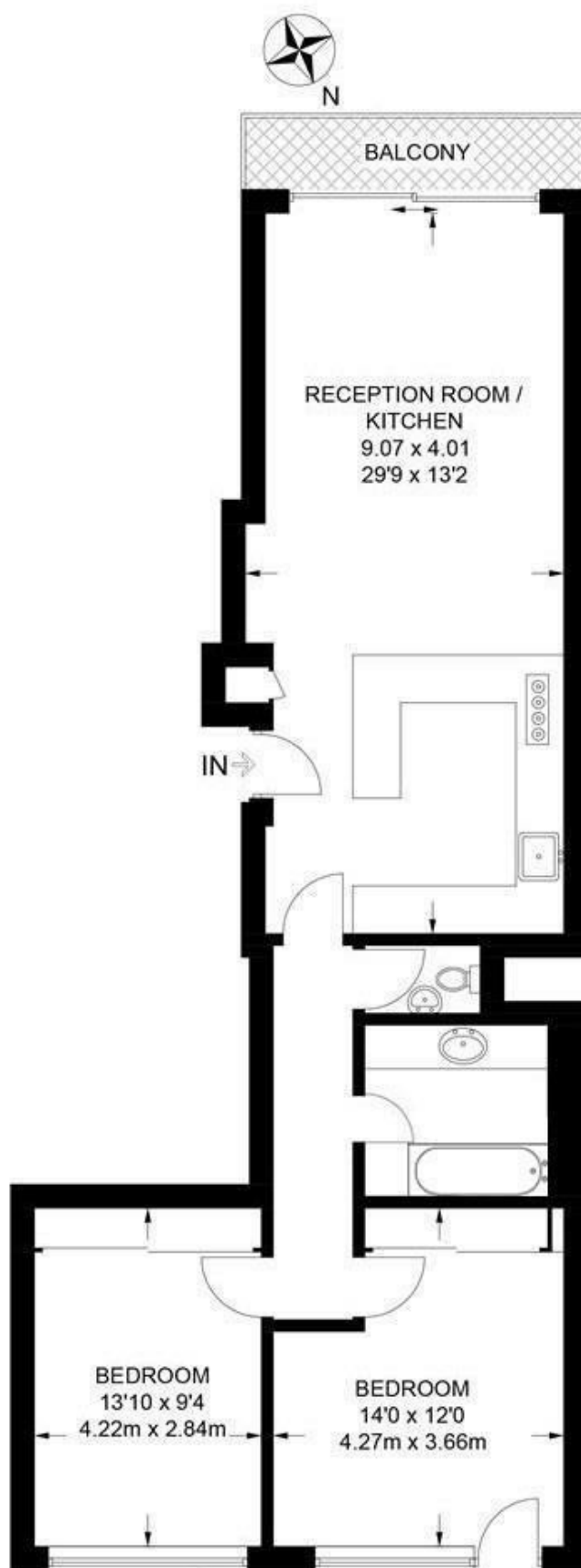
Deposit: 5 Weeks Rent

No Agency Fee

Tenancy: 12 month contract

Council Tax Band E: £1,557.20 per annum (25% Discount Single Occupancy)

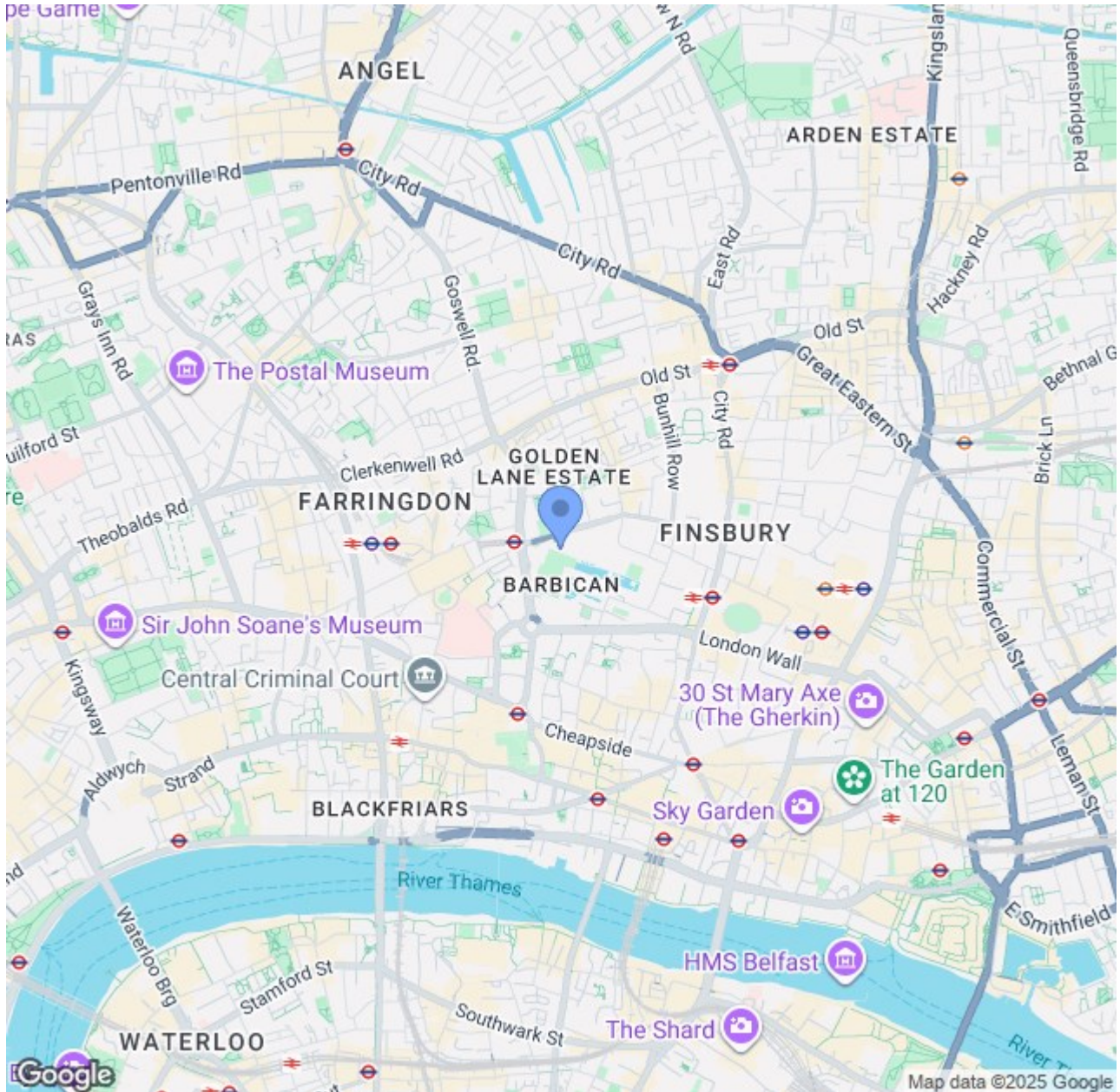




**APPROXIMATE GROSS INTERNAL AREA**  
**801 SQ FT / 74.4 SQ M**

This plan has been drawn for illustrative and identification purposes only.





## CONTACT US ABOUT THIS PROPERTY

122 Newgate Street, London, EC1A 7AA

T: 020 7600 0026

F: 020 7600 0025

E: [property@scottcity.co.uk](mailto:property@scottcity.co.uk)



Energy Efficiency Rating		
	Current	Potential
Very energy efficient - lower running costs		
(92-plus) <b>A</b>		
(81-91) <b>B</b>		
(69-80) <b>C</b>		
(55-68) <b>D</b>		
(39-54) <b>E</b>		
(21-38) <b>F</b>		
(1-20) <b>G</b>		
Not energy efficient - higher running costs		
<b>England &amp; Wales</b>	EU Directive 2002/91/EC	