



## 10 HOSIER LANE, LONDON, EC1A 9LS

£554 Per Week

1 Bedrooms | 1 Bathrooms | To Let

### Property Features

- One Bedroom
- Modern Bathroom
- 7th Floor
- Approx 520 sq feet
- Close to Elizabeth Line Farringdon
- Fitted Kitchen
- Furnished
- 24 Hour Concierge
- Close to St Pauls
- Available October

**AVAILABLE OCTOBER-** This well located good size 520 Sq Ft one bedroom apartment is situated just off the Holborn Viaduct in a development called 10, Hosier Lane on the third floor. The property offers a fully fitted kitchen with full size fridge freezer, dishwasher & washer dryer. The flat is completed with very high quality fixtures & fittings including oak wood flooring & polished black granite work surfaces. Other key features of this flat are it has a wonderful limestone bathroom and a 24 hour concierge in the main entrance lobby. The flat is situated on the 7th floor.

This development offers 24/7 porterage and is situated just off West Smithfield close to St Pauls and Farringdon in a very central City Location.

Situated close to BARBICAN (Circle Line), St PAUL'S (Central Line) and the ELIZABETH LINE Station, Farringdon. Within walking distance are Waitrose, Marks & Spencer and Tesco. Also within easy reach are St. Pauls' Cathedral, The River, South Bank, Tate Modern, and the One New Change Shopping Complex with many shops, restaurants and bars.

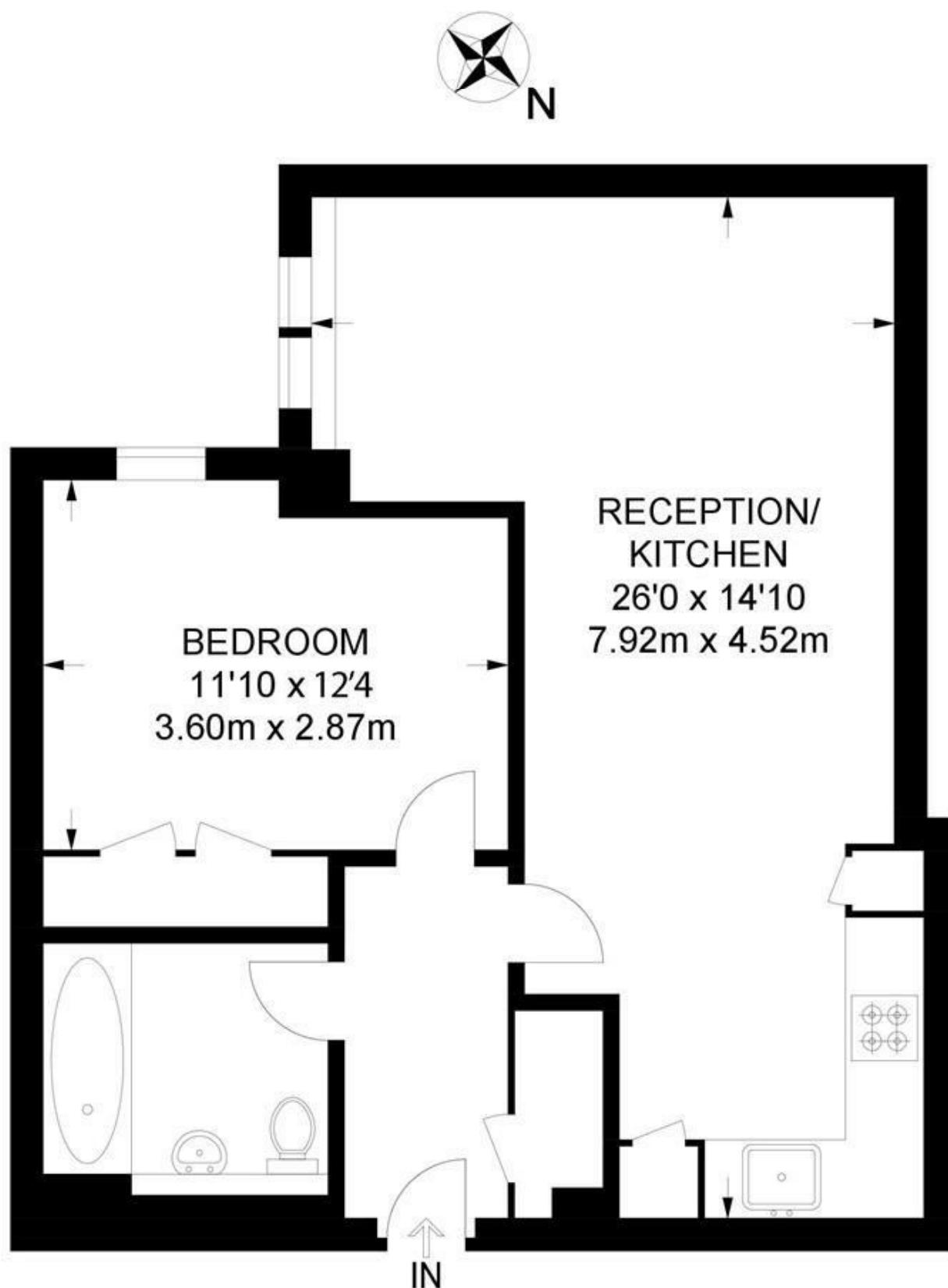
Deposit: 5 Weeks Rent

No Agency Fee

Tenancy: 12 month contract, 6 months break clause

Council Tax: Band E = £1,557.20 per year (25% discount for single occupancy).

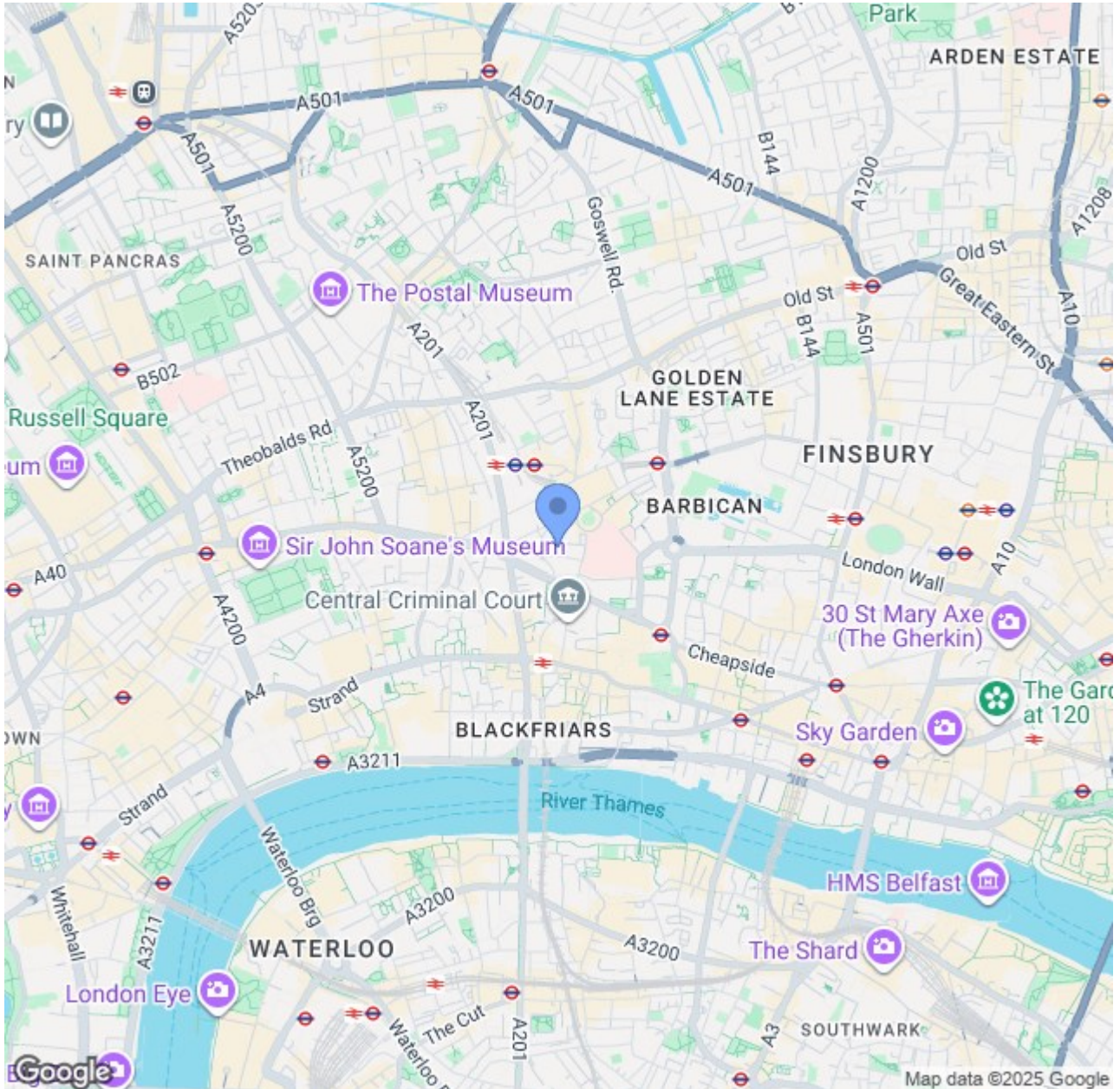




**SEVENTH FLOOR**

**APPROXIMATE GROSS INTERNAL AREA  
548 SQ FT / 50.9 SQ M**





## CONTACT US ABOUT THIS PROPERTY

122 Newgate Street, London, EC1A 7AA

T: 020 7600 0026

F: 020 7600 0025

E: [property@scottcity.co.uk](mailto:property@scottcity.co.uk)



Energy Efficiency Rating		
	Current	Potential
Very energy efficient - lower running costs		
(92-plus) <b>A</b>		
(81-91) <b>B</b>		
(69-80) <b>C</b>		
(55-68) <b>D</b>		
(39-54) <b>E</b>		
(21-38) <b>F</b>		
(1-20) <b>G</b>		
Not energy efficient - higher running costs		
<b>England &amp; Wales</b>	EU Directive 2002/91/EC	