



## SEDDON HOUSE, LONDON, EC2Y 8BX

£580 Per Week

1 Bedrooms | 1 Bathrooms | To Let

### Property Features

- One Bedroom
- Fourth Floor
- Balcony
- Unfurnished
- L Shape Reception
- West Facing
- Private Gardens
- Security Entry

AVAILABLE OCTOBER - Offered in good condition throughout is this LARGE ONE BEDROOM apartment in this well located Barbican block called SEDDON HOUSE. This large one bedroom apartment is offered UNFURNISHED and benefits from a large "L" shaped reception room and a west facing balcony. Located within walking distance of the Barbican Arts Centre with its theatres, cinema's, library, gallery and restaurants, Seddon House is ideally placed for Barbican Tube Station and is a short walk from London Wall and St Pauls Cathedral.

SEDDON HOUSE is situated close to BARBICAN underground station, St PAUL'S (Central Line) Mansion House and the new ELIZABETH LINE Station at Farringdon. Within walking distance are Waitrose, Marks & Spencer and Tesco. Also within easy reach are St. Pauls' Cathedral, The River, South Bank, Tate Modern, One New Change Shopping Complex with sixty shops, restaurants and bars. The Barbican Arts Centre with its many bars, restaurants, theatre, cinema's, gallery and library is within easy walking distance along the covered podium that makes up the Barbican Estate.

Deposit: 5 Weeks Rent

No Agency Fee

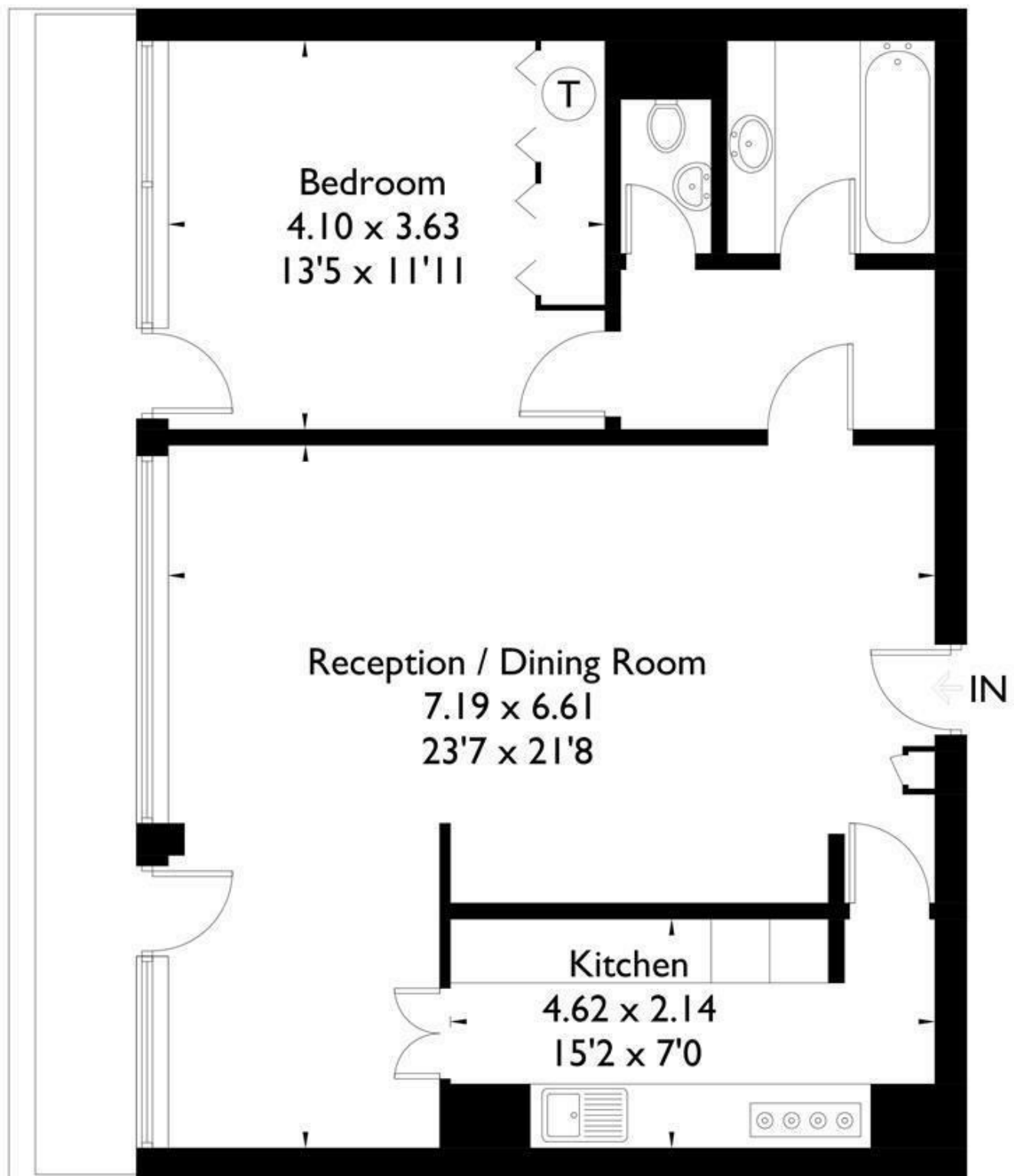
Tenancy: 12 month contract





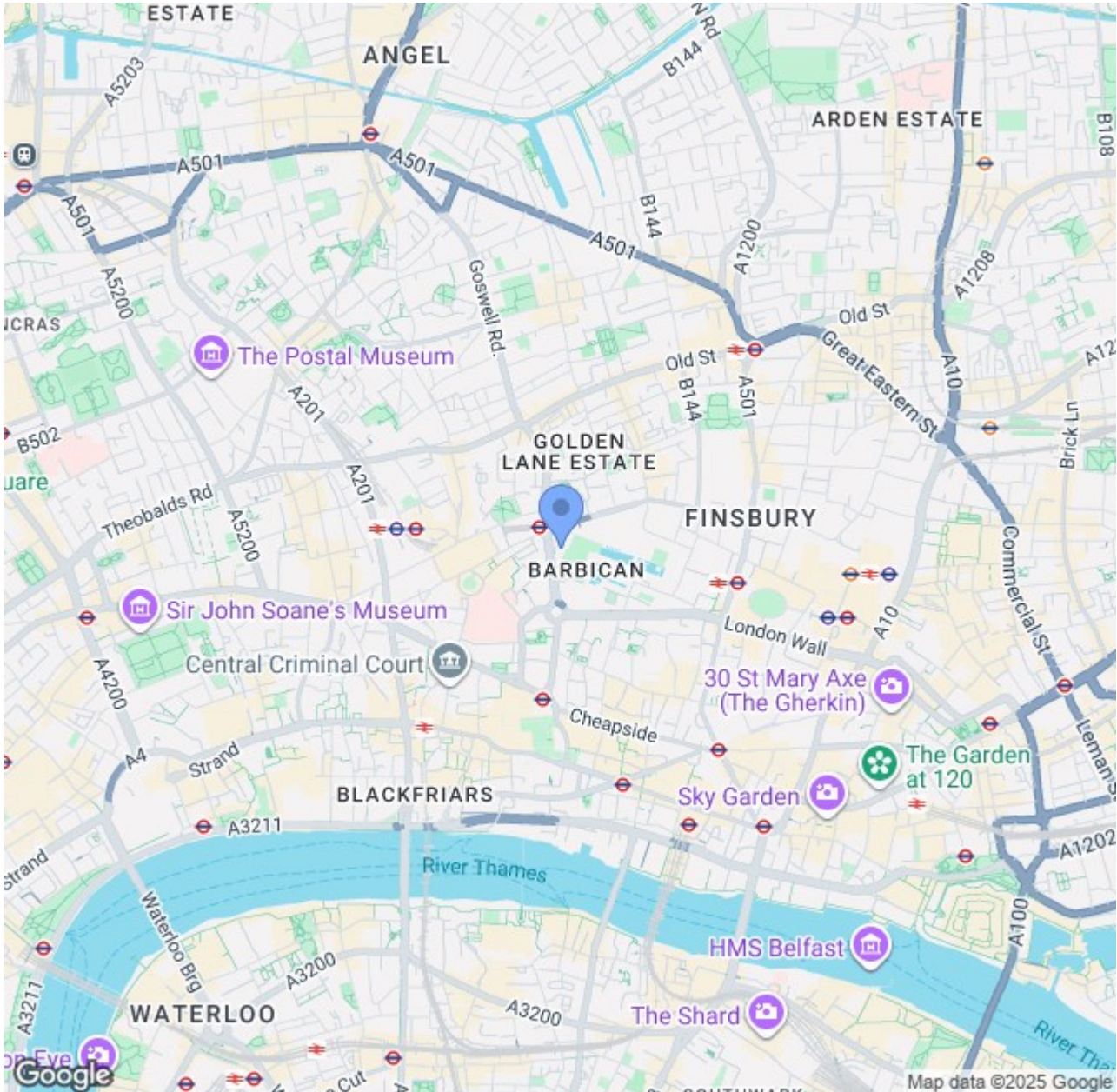
## Seddon House, Barbican, EC2

Approximate Gross Internal Area = 75.3 sq m / 810 sq ft



## Third Floor

Illustration for identification purposes only. Not to scale  
Ref: 181888



## CONTACT US ABOUT THIS PROPERTY

122 Newgate Street, London, EC1A 7AA

T: 020 7600 0026

F: 020 7600 0025

E: [property@scottcity.co.uk](mailto:property@scottcity.co.uk)



Energy Efficiency Rating		
	Current	Potential
Very energy efficient - lower running costs		
(92-plus) <b>A</b>		
(81-91) <b>B</b>		
(69-80) <b>C</b>		
(55-68) <b>D</b>		
(39-54) <b>E</b>		
(21-38) <b>F</b>		
(1-20) <b>G</b>		
Not energy efficient - higher running costs		
<b>England &amp; Wales</b>	EU Directive 2002/91/EC	