



5 MIDDLE STREET, LONDON, EC1A 7JA

£565 Per Week

2 Bedrooms | 1 Bathrooms | To Let

Property Features

- Two Bedrooms
- Fitted Kitchen
- Reception Room
- Close to Barbican
- First Floor
- Breakfast Room
- Furnished
- Close to new Elizabeth Line Farringdon

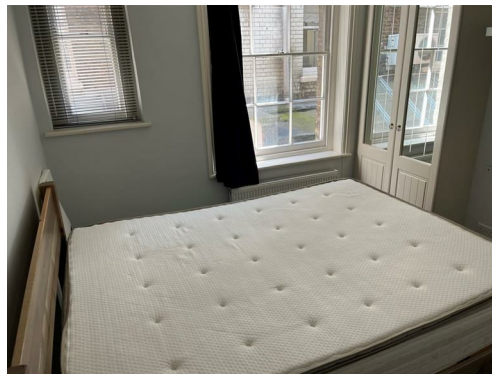
AVAILABLE NOW - Situated on a road named Middle Street in the heart of WEST SMITHFIELD that oozes character, is this fantastic TWO-BEDROOM apartment that is a modern conversion of a Georgian terraced house. The KITCHEN is FULLY FITTED with a full sized fridge freezer, WASHING MACHINE and dishwasher there is also a dining area that will seat four people. The modern bathroom has both facilities of a bath & a shower that has a glass screen all fixtures and fittings are to a high standard.

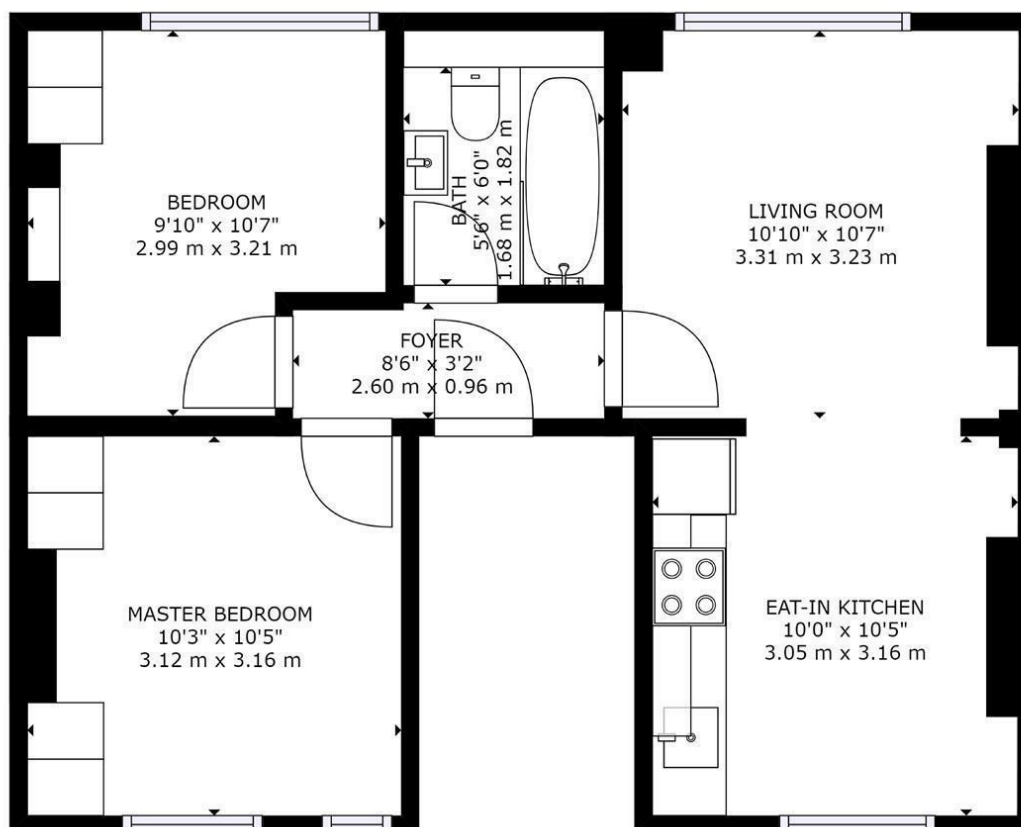
This area close to St Paul's offers many bars, pubs and restaurants and is within easy walking distance of the RIVER and the Millennium Bridge. Covent Garden to the west is also easily accessible. Also close by is St PAUL'S underground station (Central Line) Mansion House and the new Elizabeth Line Station at Farringdon (Open Now). Within walking distance are Marks & Spencer and Tesco. Also within easy reach are St. Pauls' Cathedral, The River, South Bank, Tate Modern, and the One New Change Shopping Complex with sixty shops, restaurants and Bars.

Deposit: 5 Weeks Rent

No Agency Fee

Council Tax Band: F (25% discount for single occupancy) - £1,840.32 per annum

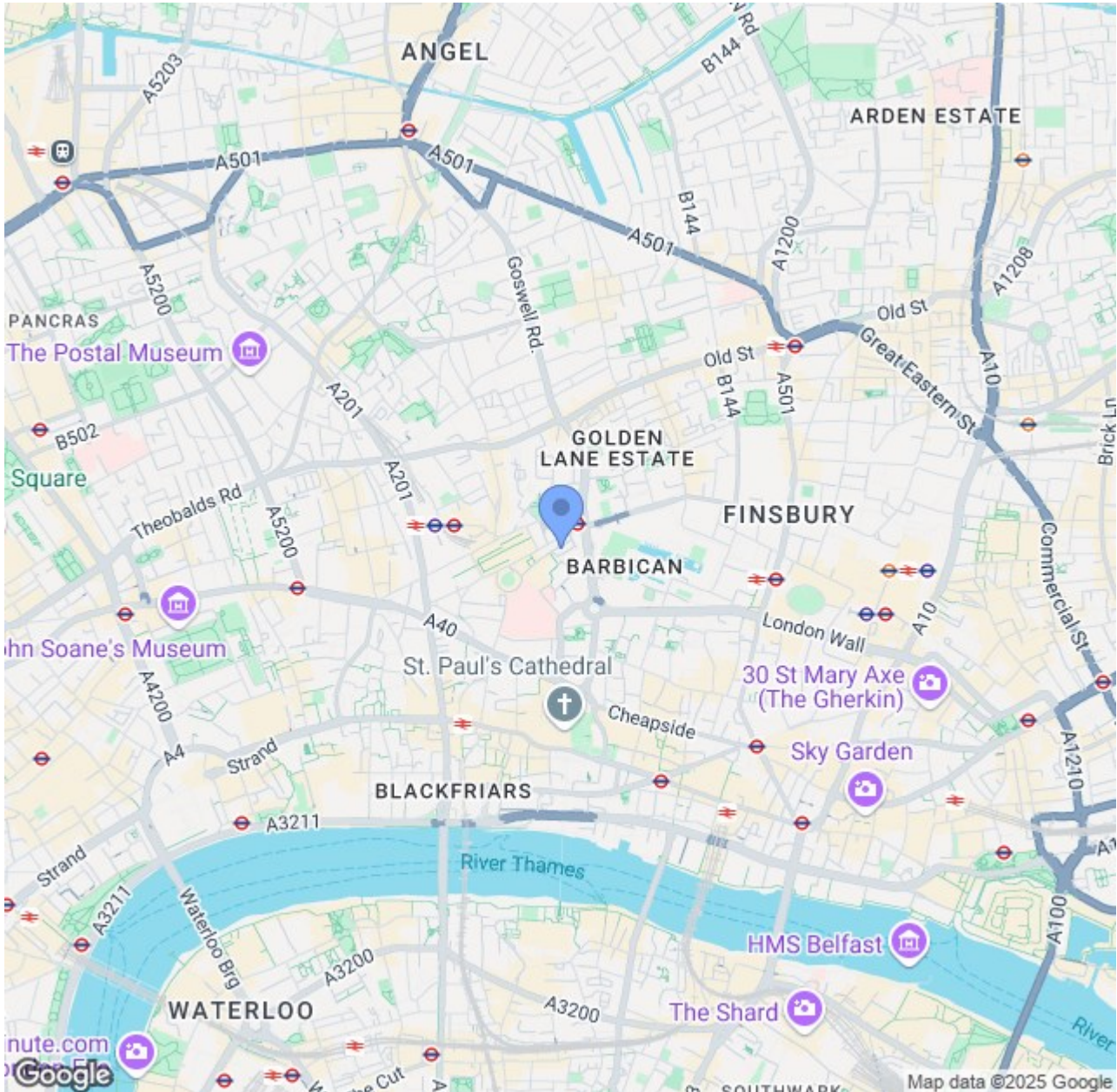




FLOOR 1

GROSS INTERNAL AREA
 FLOOR 1: 508 sq ft, 47 m²
 TOTAL: 508 sq ft, 47 m²
 SIZES AND DIMENSIONS ARE APPROXIMATE, ACTUAL MAY VARY.

POWERED BY
matterport



CONTACT US ABOUT THIS PROPERTY

122 Newgate Street, London, EC1A 7AA

T: 020 7600 0026

F: 020 7600 0025

E: property@scottcity.co.uk



Energy Efficiency Rating		
	Current	Potential
Very energy efficient - lower running costs		
(92-plus) A		
(81-91) B		
(69-80) C	73	81
(55-68) D		
(39-54) E		
(21-38) F		
(1-20) G		
Not energy efficient - higher running costs		
England & Wales	EU Directive 2002/91/EC	