



10 HOSIER LANE, LONDON, EC1A 9LS

Asking Price £499,500

1 Bedrooms | 1 Bathrooms | For Sale

Property Features

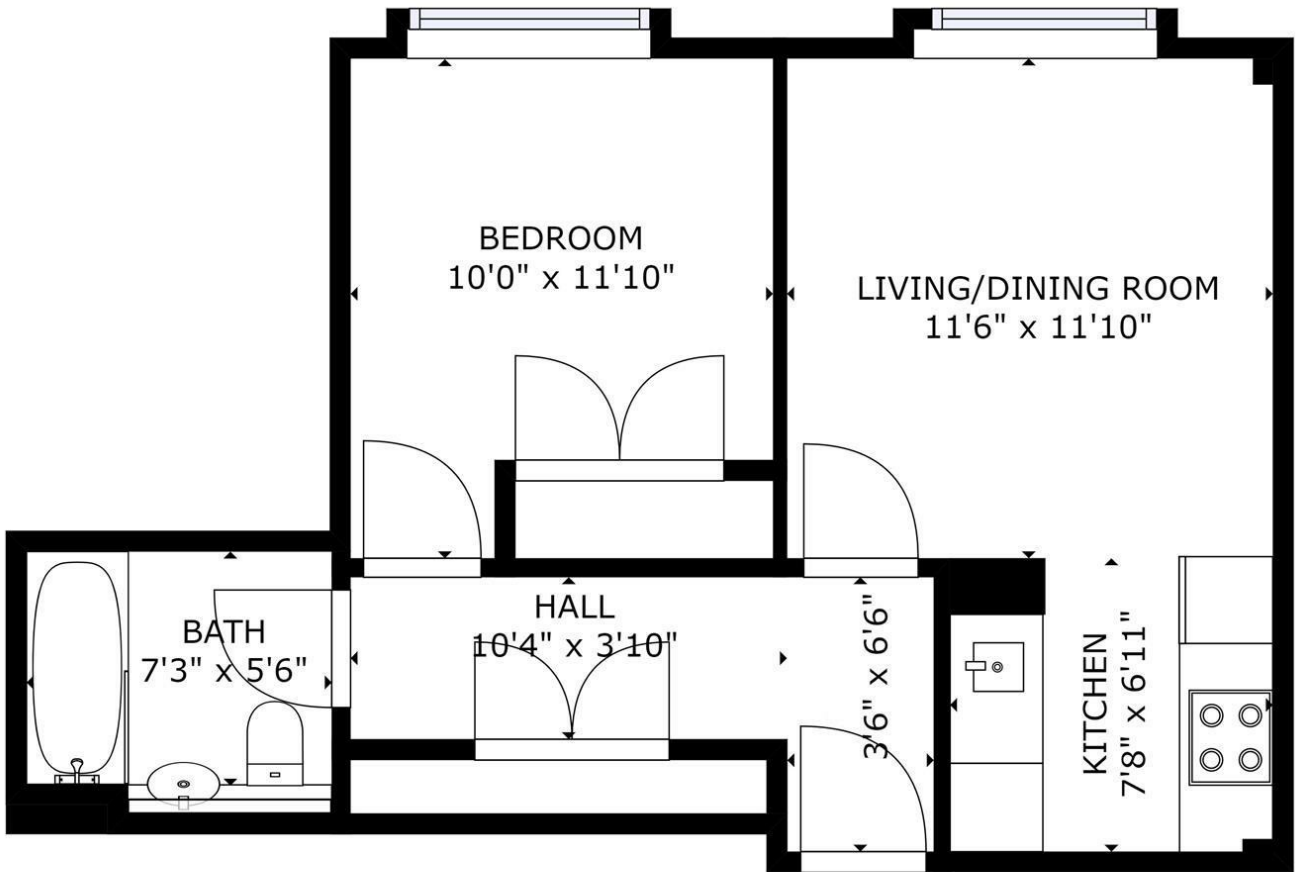
- One Bedroom
- Central City Location
- Modern Bathroom
- 24hr Porter
- Fourth Floor
- Wood Flooring
- Fully Fitted Kitchen
- Close to St Pauls

This well located one bedroom apartment is situated just off the Holborn Viaduct in a development called 10, Hosier Lane. The property offers a fully fitted kitchen with full size fridge freezer, dishwasher & washer dryer. The flat is finished with very high quality fixtures & fittings including oak wood flooring & polished black granite kitchen work surfaces. Other key features of this great flat are its modern bathroom, 24 hour concierge and the fantastic entrance to the building which is in the process of a complete refurbishment.

This development offers 24 hour portorage and is situated just off West Smithfield close to St Pauls in a very central CITY location also close to FARRINGDON (Circle Line), St PAUL'S (Central Line) Mansion House and the new ELIZABETH LINE Station at Liverpool Street and Farringdon (Open Now). Within walking distance are Waitrose, Marks & Spencer and Tesco. Also within easy reach are St. Pauls' Cathedral, The River, South Bank, Tate Modern, and the One New Change Shopping Complex with sixty shops, restaurants and bars.

Lease: 999 years from 2002 Service Charge: £3960.00 per annum Ground Rent: £250 per annum Council Tax Band E - £1400.22



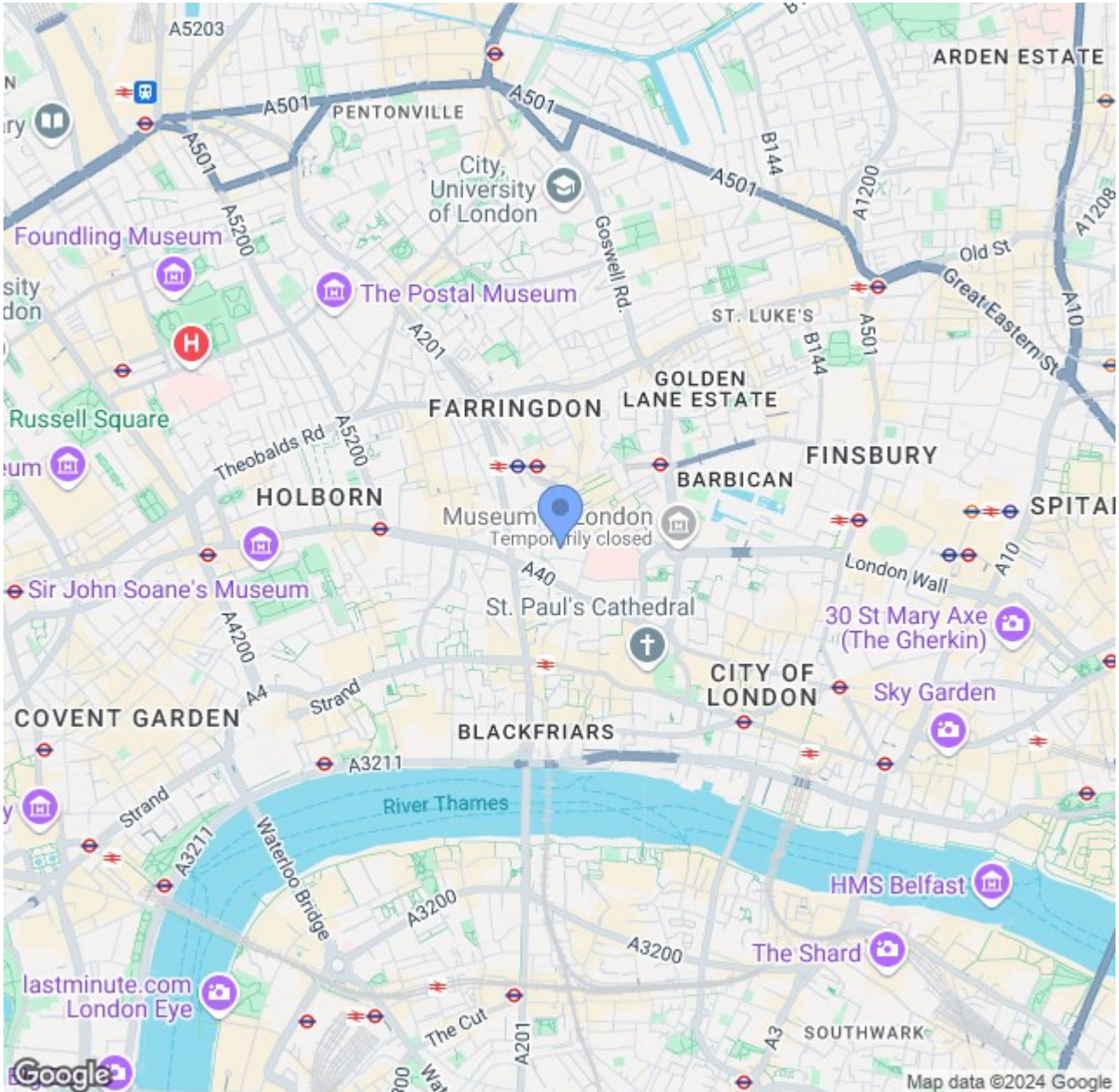


GROSS INTERNAL AREA

TOTAL: 453 sq ft

SIZES AND DIMENSIONS ARE APPROXIMATE, ACTUAL MAY VARY.

POWERED BY
matterport



CONTACT US ABOUT THIS PROPERTY

122 Newgate Street, London, EC1A 7AA

T: 020 7600 0026

F: 020 7600 0025

E: property@scottcity.co.uk



Energy Efficiency Rating		Current	Potential
Very energy efficient - lower running costs			
(92 plus) A			
(81-91) B			
(69-80) C			
(55-68) D			
(39-54) E			
(21-38) F			
(1-20) G			
Not energy efficient - higher running costs			
England & Wales		78	84
		EU Directive 2002/91/EC	