



TUDOR ROSE COURT, LONDON, EC2Y 8DY

Asking Price £425,000

1 Bedrooms | 1 Bathrooms | For Sale

Property Features

- Retirement Flat
- Third Floor
- approx 670 sq feet
- Day Porter
- One Bedroom
- Fitted Kitchen
- Lift
- Close to Barbican

Tudor Rose Court is a modern retirement development (minimum age 60) located between the Barbican and Golden Lane Estates in a quiet traffic-free cul de sac.

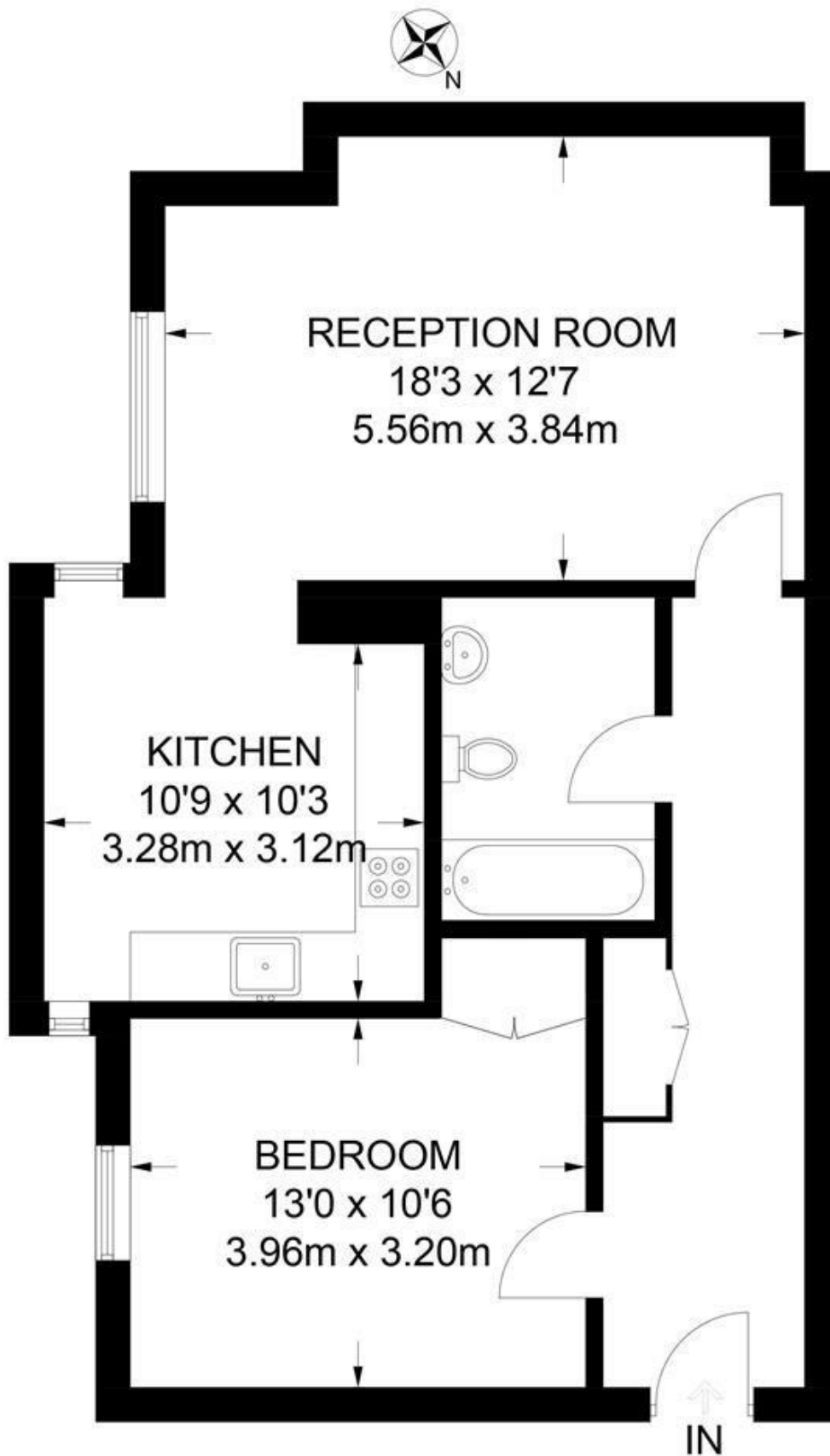
This well presented good size one-bedroom apartment is situated on the third floor and offers entrance hall, excellent size reception room, fitted kitchen, bedroom and bathroom with a north easterly aspect overlooking the church and Fann Street.

The building benefits from a daytime concierge service, passenger lift and a communal sun terrace and gardens.

Situated close to Barbican Station (circle line), St Paul's (Central Line) Mansion House and the new Elizabeth Line Station at Farringdon. Within walking distance are Waitrose, Marks & Spencer and Tesco. Also within easy reach are St. Pauls' Cathedral, The River, South Bank, Tate Modern, and the One New Change Shopping Complex with many shops, restaurants and bars. The Barbican Arts Centre with its many bars, restaurants, theatre, cinema's, gallery and library is also within easy walking distance.

Lease: 128 Years from 1996 Service Charge: £2816.00 Ground Rent: £50 per annum

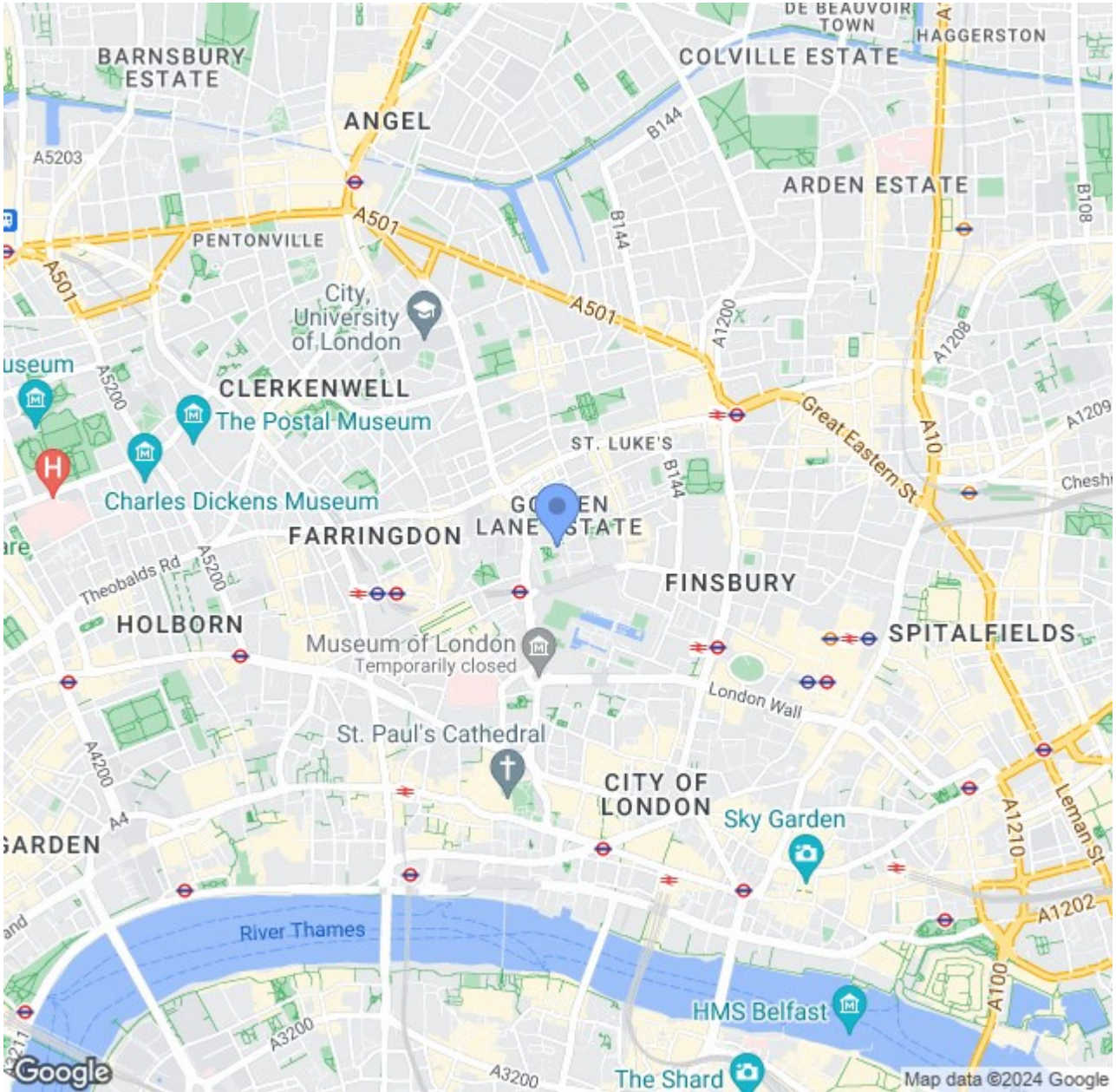




THIRD FLOOR

APPROXIMATE GROSS INTERNAL AREA
689 SQ FT / 64.0 SQ M

This plan has been drawn for illustrative and identification purposes only.



CONTACT US ABOUT THIS PROPERTY

122 Newgate Street, London, EC1A 7AA

T: 020 7600 0026

F: 020 7600 0025

E: property@scottcity.co.uk



Energy Efficiency Rating		Current	Potential
Very energy efficient - lower running costs			
(92 plus) A			
(81-91) B		82	82
(69-80) C			
(55-68) D			
(39-54) E			
(21-38) F			
(1-20) G			
Not energy efficient - higher running costs			
England & Wales		EU Directive 2002/91/EC	