



GILBERT HOUSE, LONDON, EC2Y 8BD

£625 Per Week

1 Bedrooms | 1 Bathrooms | To Let

Property Features

- Large One Bed Apartment
- Unfurnished
- Original Bathroom
- South Facing Balcony
- Views over the Lakeside Terrace
- L shape Reception
- Modern Kitchen
- Fifth Floor
- Close To Moorgate Tube
- Available August

AVAILABLE AUGUST. Situated on the FIFTH floor of Gilbert House which is arguably the prime position within this famous residential complex is this wonderfully presented unfurnished LARGE ONE BEDROOM apartment (Type 31). The property is located almost centre of the block with a truly superb WEST aspect which receives a huge amount of light through the large BALCONY sliding windows and has a terrific views out toward the central lakes & Lauderdale Tower. The kitchen has been re-fitted and includes WASHER / DRYER, oven & microwave, fridge / freezer and four electric hobs. This property is offered unfurnished.

Barbican tube station (Circle, Hammersmith & City Lines), Moorgate (Northern Line), St Paul's (Central Line) Mansion House (District Line) and the new Crossrail Station at Farringdon each within a short walking distance. Waitrose, Marks & Spencer and Tesco are close at hand.

Gilbert House is situated in the middle of the Barbican Estate within walking distance of the Barbican Arts Centre with its cinema, art gallery, concert hall, restaurants, bars and cafes.

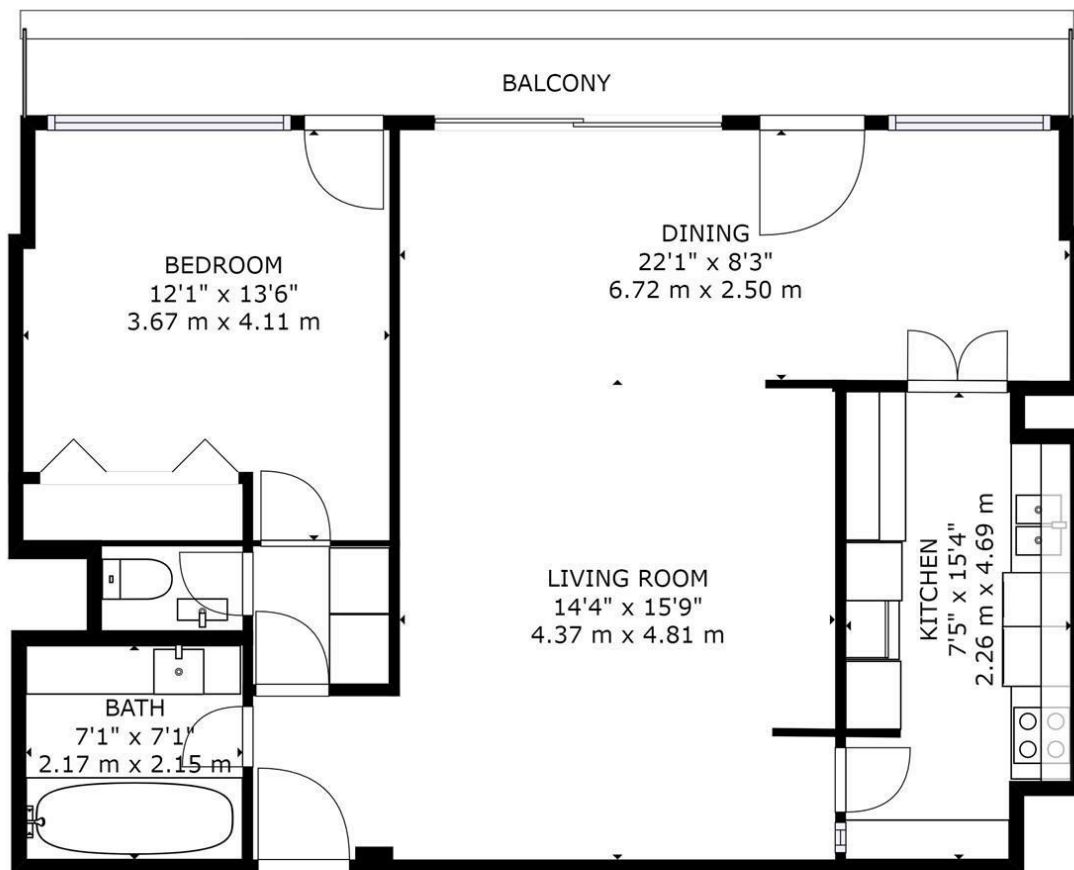
Council Tax Band E : £1,488.53 per annum

Deposit: 5 Weeks Rent

No Agency Fee

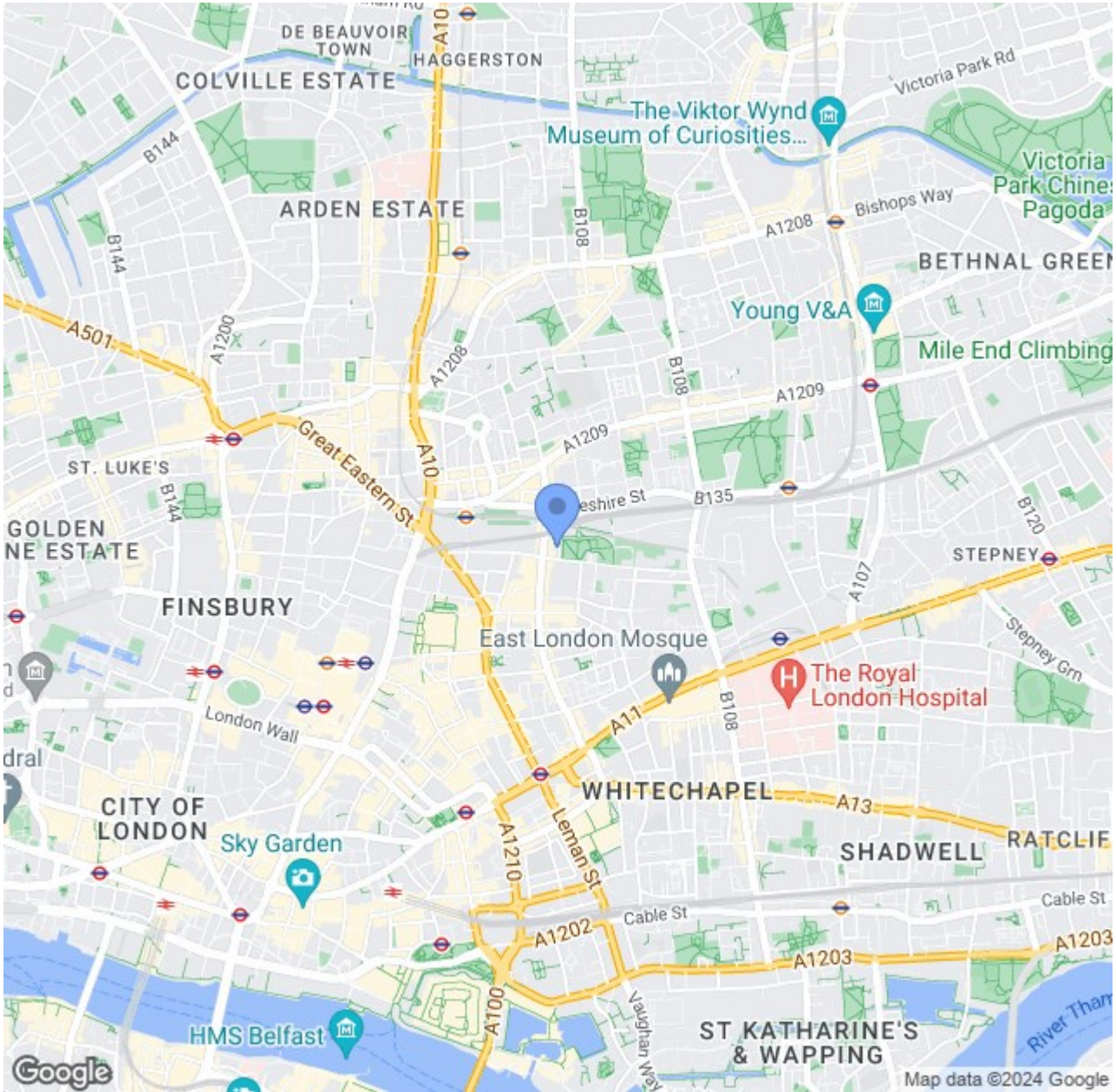
Tenancy: 12 month contract, 6 Month break clause





GROSS INTERNAL AREA
TOTAL: 806 sq ft, 75 m²
SIZES AND DIMENSIONS ARE APPROXIMATE, ACTUAL MAY VARY.

POWERED BY
matterport



CONTACT US ABOUT THIS PROPERTY

122 Newgate Street, London, EC1A 7AA

T: 020 7600 0026

F: 020 7600 0025

E: property@scottcity.co.uk



Energy Efficiency Rating		Current	Potential
<i>Very energy efficient - lower running costs</i>			
(92 plus) A			
(81-91) B			
(69-80) C		72	77
(55-68) D			
(39-54) E			
(21-38) F			
(1-20) G			
<i>Not energy efficient - higher running costs</i>			
England & Wales		EU Directive 2002/91/EC	