



## 39-40 BARTHOLOMEW CLOSE, LONDON, EC1A 7JN

£554 Per Week

1 Bedrooms | 1 Bathrooms | To Let

### Property Features

- One Bedroom Apartment
- Fully Fitted Kitchen
- Gas Central Heating
- Fully Furnished
- Second Floor
- Modern Bathroom
- Modern Furnishings
- Available June

AVAILABLE EARLY JUNE- Situated at the corner of Bartholomew Close in the cobbled stone court yard, is this fantastic ONE BEDROOM APARTMENT. The property offers solid wooden flooring throughout with the exception of the carpeted bedrooms & tiled bathrooms. The open-plan kitchen is fully fitted with washer/dryer, dishwasher and full fridge/freezer. New, modern furnishings are found all the way through the apartment which only adds more to the up to date city living experience. Other key features of this fantastic flat include security entrance system, large amounts of natural light from the large windows and the short walk to either Barbican or St Paul's Tube Stations.

Deposit: 5 Weeks Rent

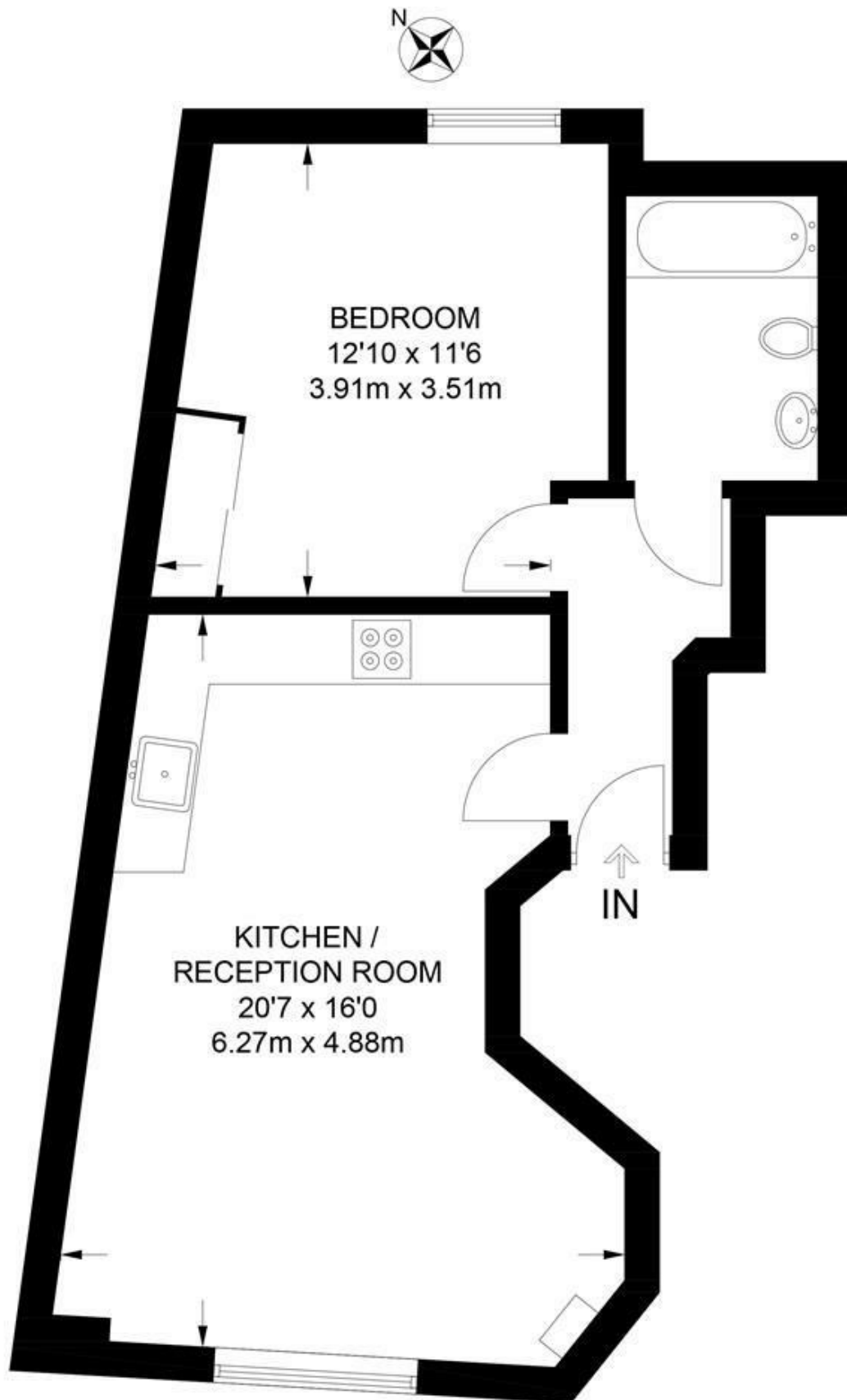
No Agency Fee

Tenancy: 12 month contract, 6 Month break clause

Council Tax Band F: £1,759.18 per annum (25% discount for single occupancy)



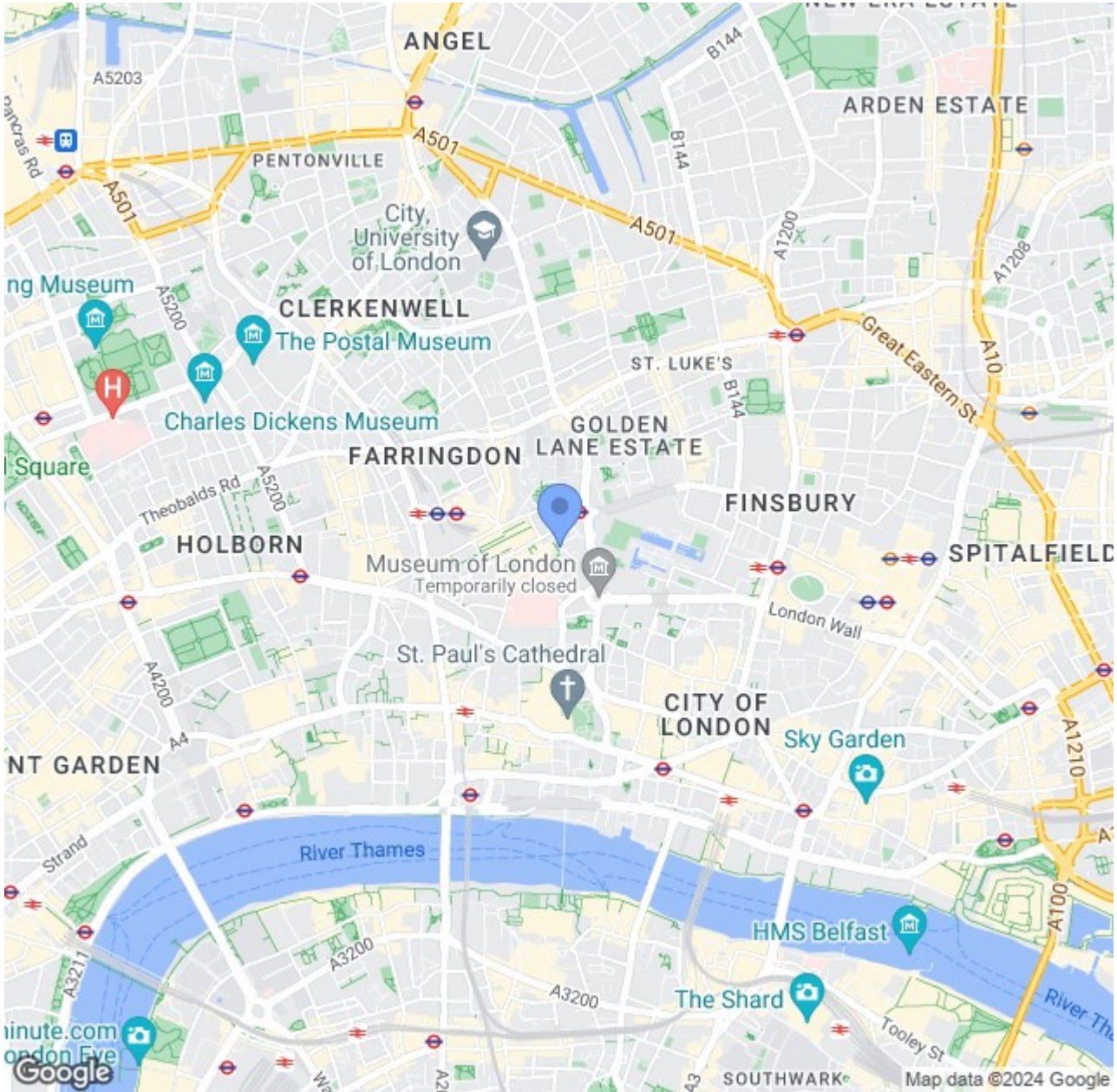




## SECOND FLOOR

**APPROXIMATE GROSS INTERNAL AREA**  
**510 SQ FT / 47.4 SQ M**

This plan has been drawn for illustrative and identification purposes only.



## CONTACT US ABOUT THIS PROPERTY

122 Newgate Street, London, EC1A 7AA

T: 020 7600 0026

F: 020 7600 0025

E: [property@scottcity.co.uk](mailto:property@scottcity.co.uk)



Energy Efficiency Rating		Current	Potential
<i>Very energy efficient - lower running costs</i>			
(92 plus) <b>A</b>			
(81-91) <b>B</b>		79	80
(69-80) <b>C</b>			
(55-68) <b>D</b>			
(39-54) <b>E</b>			
(21-38) <b>F</b>			
(1-20) <b>G</b>			
<i>Not energy efficient - higher running costs</i>			
<b>England &amp; Wales</b>		EU Directive 2002/91/EC	