



43 BARTHOLOMEW CLOSE, LONDON, EC1A 7HN

Asking Price £765,000

2 Bedrooms | 2 Bathrooms | To Let

Property Features

- Two Double Bedrooms
- Wooden Flooring
- Gas Central Heating
- Security Entry System
- Close to St Pauls
- Two Bathrooms
- Fitted Kitchen
- Balcony
- Second Floor

Situated in Bartholomew Close in the cobbled stone court yard, is this fantastic two double bedroom apartment. The property offers wooden flooring throughout with the exception of the carpeted bedrooms & tiled bathrooms. The kitchen is fully fitted with washer/dryer, dishwasher and full fridge/freezer. Other key features of this fantastic flat include day concierge and the short walk to either Barbican or St Paul's Tube Stations.

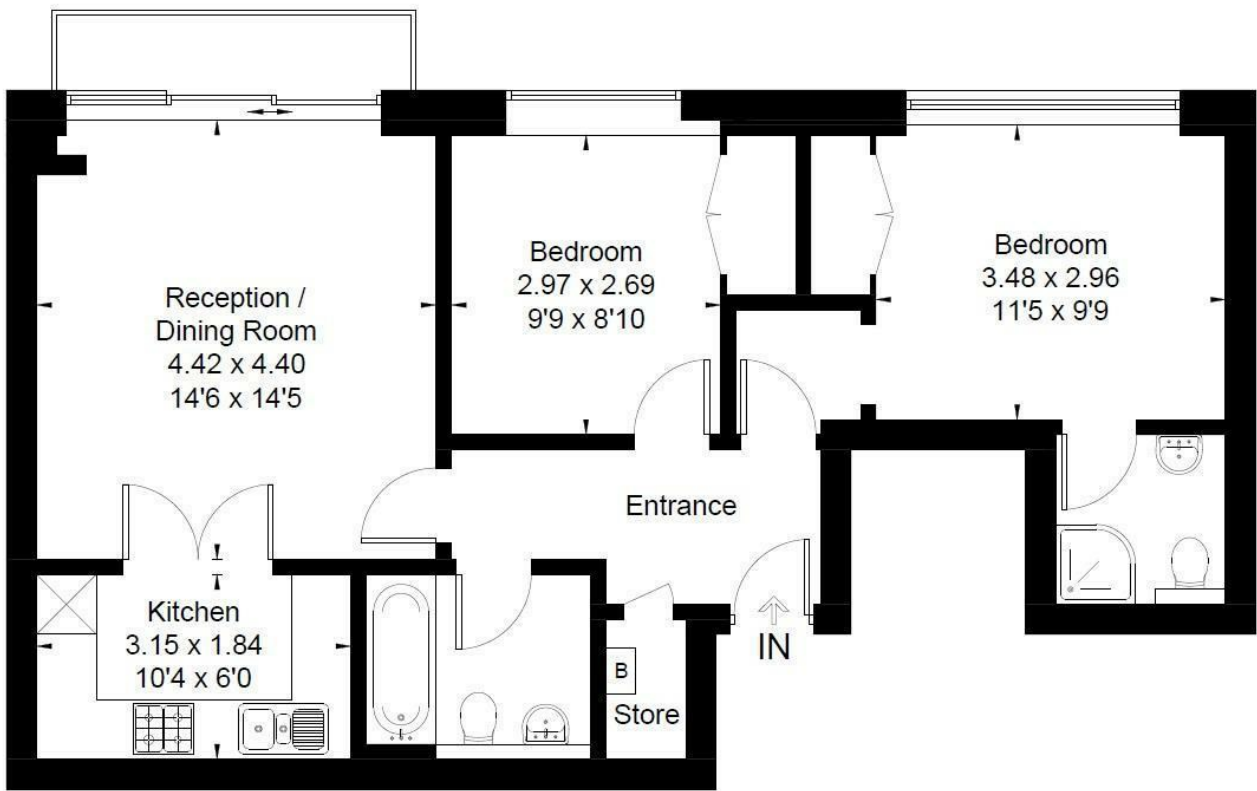
This area close to St Paul's offers many bars, pubs and restaurants and is within easy walking distance of the RIVER and the Millennium Bridge. Covent Garden to the west is also easily accessible. Also close by is St PAUL'S underground station (Central Line) Mansion House and the new ELIZABETH LINE Station at FARRINGDON (Now Open). Within walking distance are Marks & Spencer and Tesco. Also within easy reach are St. Pauls' Cathedral, The River, South Bank, Tate Modern, and the One New Change Shopping Complex with sixty shops, restaurants and Bars.

Lease: 125 Years from 1997 Service Charge: £3,432.00 per annum Ground Rent: £1115.00 per annum

Council Tax: Band G = £2029.82 (25% discount for single occupancy)

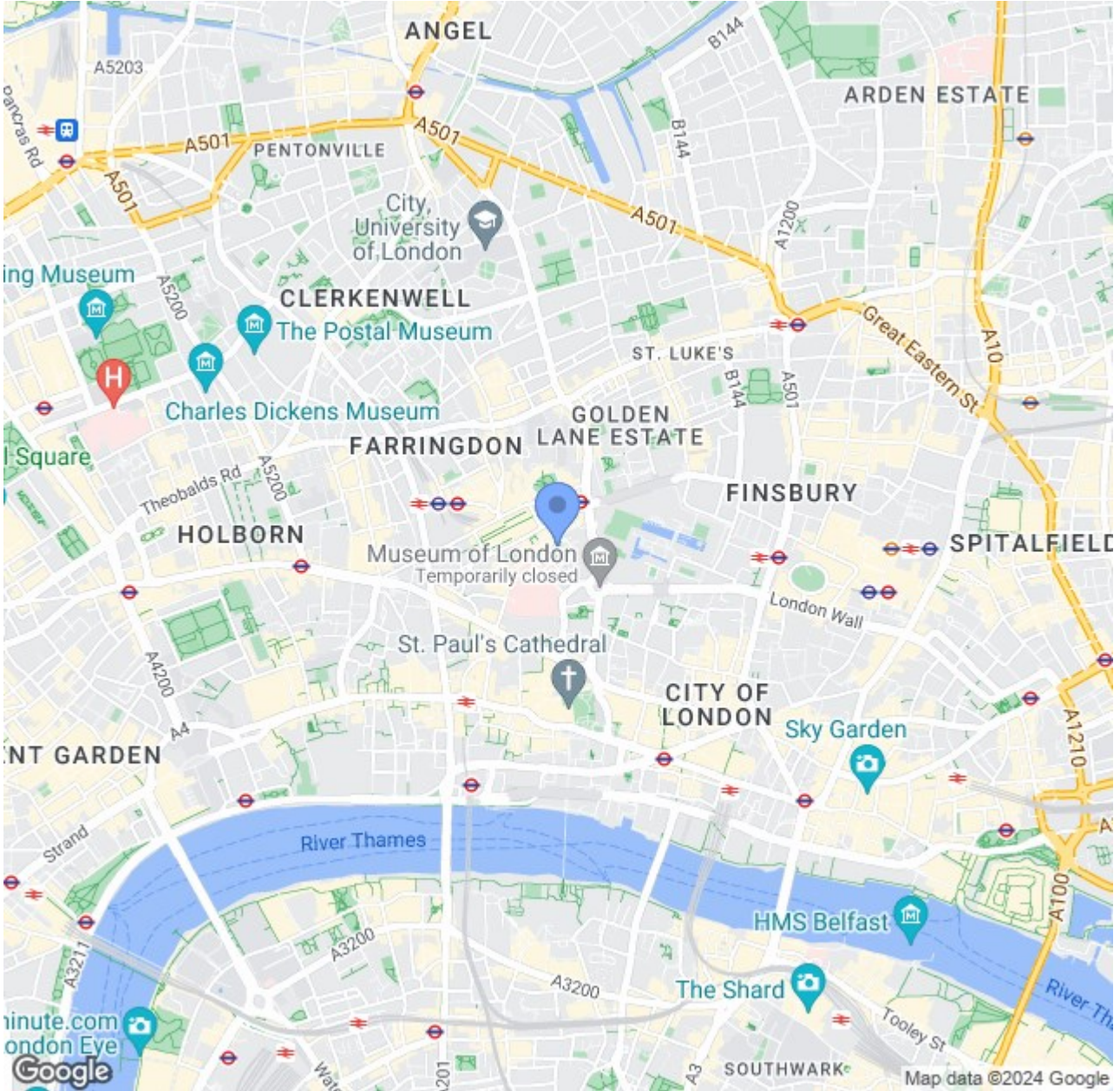


Approximate Area = 64.2 sq m / 691 sq ft
Including Limited Use Area (1.3 sq m / 14 sq ft)



Third Floor

Surveyed and drawn in accordance with the International Property Measurement Standards (IPMS 2: Residential)
fourwalls-group.com 256001



CONTACT US ABOUT THIS PROPERTY

122 Newgate Street, London, EC1A 7AA

T: 020 7600 0026

F: 020 7600 0025

E: property@scottcity.co.uk



Energy Efficiency Rating		Current	Potential
<i>Very energy efficient - lower running costs</i>			
(92 plus) A			
(81-91) B		80	82
(69-80) C			
(55-68) D			
(39-54) E			
(21-38) F			
(1-20) G			
<i>Not energy efficient - higher running costs</i>			
England & Wales		EU Directive 2002/91/EC	