



Lescar Road, Waverley



Offered for sale with No Onward Chain is this well presented semi-detached home, located within the sought after modern development of Waverley - being well positioned for Sheffield Parkway and Motorway Links, Shops, Amenities and Schools.

In brief the property comprises; Entrance Hall * WC * Kitchen Diner with Integral Appliances * Lounge with French Doors - First Floor - Two Bedrooms * Bathroom - Second Floor - Master Bedrooms with Dressing Area * En-suite Shower Room - Outside - Enclosed Lawn and Patio Garden * Paved Driveway * Garage with Electrics

Asking Price: £260,000

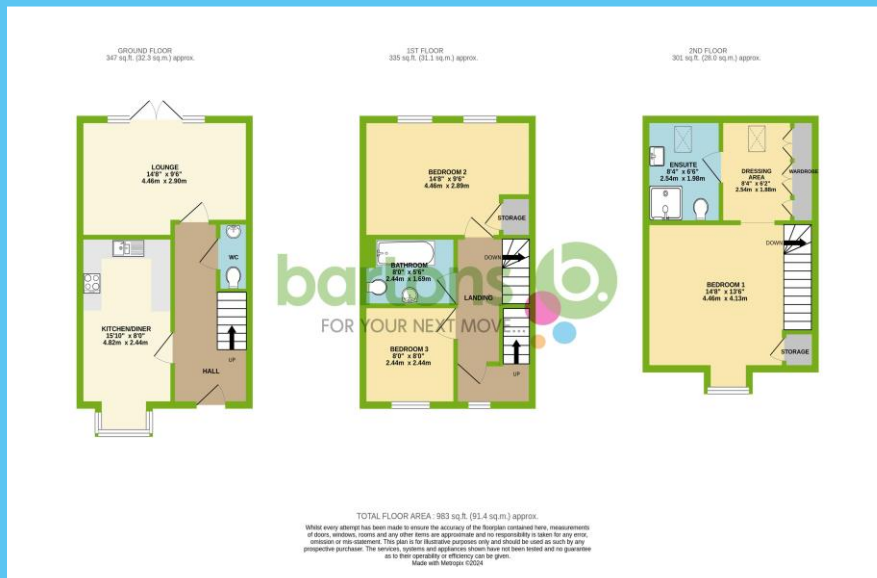


www.bartons-net.co.uk



ACCOMMODATION

- Well Presented Semi-Detached Home - Popular Waverley Location!
- SOLAR PANELS- reduced electricity bills and sustainable energy
- Kitchen Diner with Integral Appliances / Lounge with French Patio Doors
- Three Bedrooms, Two Bathrooms & Downstairs WC
- Master Bedroom with Dressing Area with Fitted Wardrobes
- Enclosed Lawn & Patio Garden
- Paved Driveway & Garage with Electrics
- FREEHOLD / Council Tax Band C



bartons 

FOR YOUR NEXT MOVE...

51-53 Moorgate Street, Rotherham, South Yorkshire, S60 2EY
 T: 01709 515740 E: info@bartons-net.co.uk

Energy Efficiency Rating			
Score	Energy rating	Current	Potential
92+	A		
81-91	B	89 B	90 B
69-80	C		
55-68	D		
39-54	E		
21-38	F		
1-20	G		

Important Notice These particulars are issued in good faith but do not constitute representations of fact or form part of any contract. These particulars should be independently verified by prospective buyers or tenants. Neither Barton Real Estates Ltd nor any of its employees or agents has any authority to make or give any representation or warranty whatsoever in relation to this property. Any areas of measurement or distances are approximate. Please note that we have not tested the services or any of the equipment in this property, accordingly we strongly advise prospective buyers to commission their own survey or service reports before finalising their offer to purchase. Printed by Facemaster Ltd 01670 713330