

bartons 
FOR YOUR NEXT MOVE...

Clifton Mount, CLIFTON



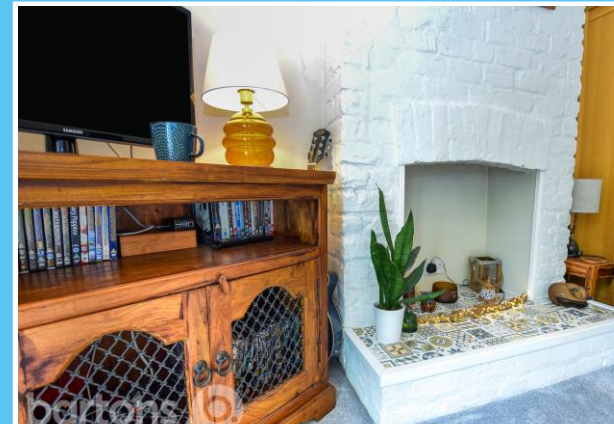
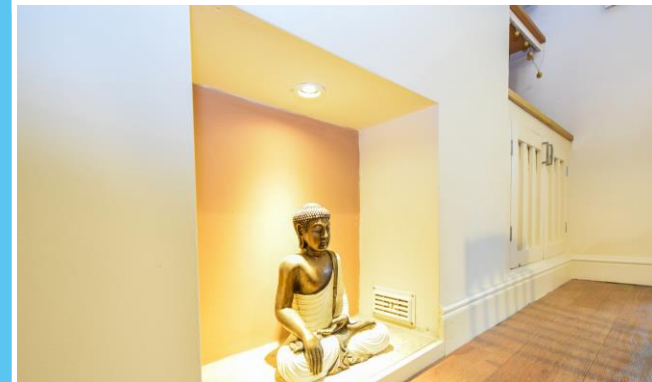
Guide Price £150,000 to £160,000 - This beautifully appointed two bedroom loft converted mid terrace home is set nestled in a private hidden position on Clifton Mount which is within walking distance of town and of course Clifton Park. It has been front extended creating two separate reception rooms, the Dining Room open plan with a stylish modern fitted Kitchen, the Lounge with a feature fireplace and French doors to a low maintenance court yard. The first floor has two bedrooms, a modern shower room and a further staircase leads to a spacious loft conversion which has storage and is currently used as a bedroom. This super home also has the benefit of a rear Cellar and has a pleasant tree lined front reception garden area. EPC to Follow.

www.bartons-net.co.uk



ACCOMMODATION

- Beautifully Appointed Two Bedroom, Loft Converted, Mid Terrace
- Hidden Location off Clifton Mount - Close to Town and Clifton Park
- Lounge, Dining Room, Modern Kitchen, Cellar
- Two First Floor Bedrooms, Shower Room
- Loft Converted Room with Storage
- Pleasant Tree Lined Front Garden and Low Maintenance Rear Court Yard
- **** VIEWING ADVISED ****



bartons **FOR YOUR NEXT MOVE...**

51-53 Moorgate Street, Rotherham, South Yorkshire, S60 2EY
T: 01709 515740 E: info@bartons-net.co.uk

