

bartons 
FOR YOUR NEXT MOVE...

Broom Crescent, Broom



Guide Price: £210,000 to £220,000. **** NO ONWARD CHAIN **** This Spacious Semi-Detached Home offers versatile living over four levels for a growing family. Being well positioned for public transport links, schools and the town centre.

In brief the property comprises; Entrance Hall * Lounge * Sitting/Dining Room * Kitchen/Diner - Lower Ground Floor - Sun Room/Utility * Cellar - First Floor - Three Bedrooms * Family Bathroom - Second Floor - Master Bedroom * En-suite Shower Room - Outside - Front and Rear Low Maintenance Gardens.

Guide Price: £210,000 to £220,000

www.bartons-net.co.uk

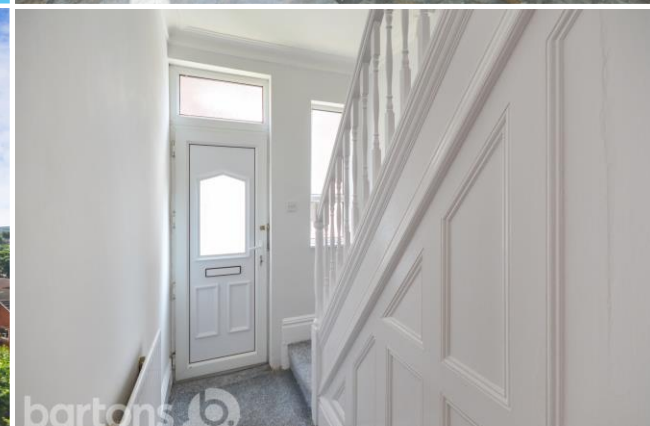


ACCOMMODATION

- Spacious Semi-Detached Home Over Four Levels
- Four Bedrooms, Two Bathrooms
- Two Reception Rooms & Kitchen Diner
- Garden Room/Utility with French Patio Doors & Cellar
- Front & Rear Low Maintenance Gardens
- Newly Decorated Throughout
- Handy Location for the Town Centre, Schools & Transport Links
- FREEHOLD / Council Tax Band C



TOTAL FLOOR AREA: 1614 sq ft (149.9 sq.m.) approx.
 Whilst every attempt has been made to ensure the accuracy of the floorplan contained here, measurements of walls, windows, doors and any other items are approximate and no responsibility is taken for any error, omission or mis-statement. This plan is for illustrative purposes only and should be used as such by any prospective purchaser. The services, systems and appliances shown have not been tested and no guarantee as to their operability or efficiency can be given.
 Made with Metropac 02/04



51-53 Moorgate Street, Rotherham, South Yorkshire, S60 2EY
 T: 01709 515740 E: info@bartons-net.co.uk

Energy Efficiency Rating			
Score	Energy rating	Current	Potential
92+	A		
81-91	B		
69-80	C		72 C
55-68	D		
39-54	E	52 E	
21-38	F		
1-20	G		