



Wordsworth Drive, Herringthorpe



Guide Price: £135,000 to £140,000. This Two Double Bedroom Semi-Detached Home is well positioned, close to Herringthorpe playing fields, Clifton Park and the Town centre.

Having ample off road paved parking, the property in brief comprises; Entrance Hall * Lounge * Kitchen Diner * Conservatory * Two Double Bedrooms * Bathroom * Rear Low Maintenance Garden.

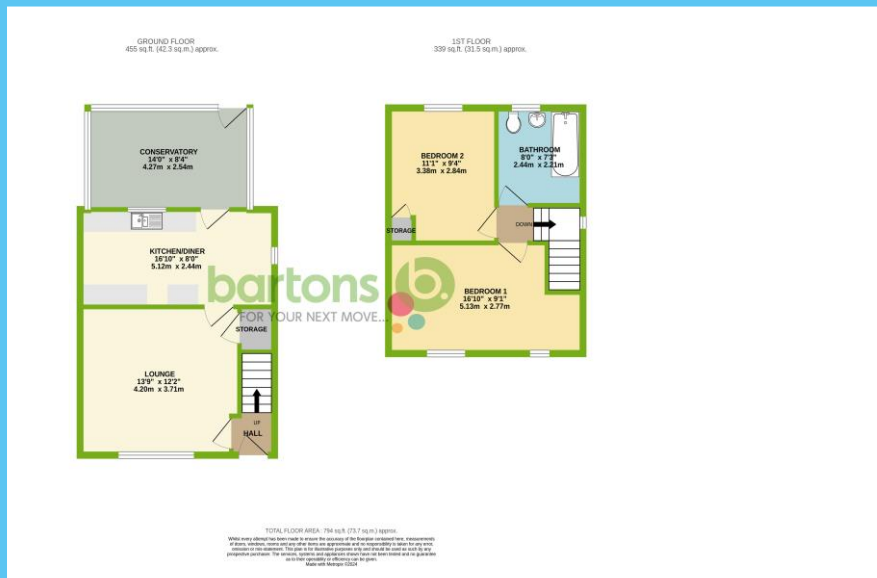
Guide Price: £135,000 to £140,000





ACCOMMODATION

- Semi-Detached Home - Close to Town Centre & Clifton Park
- Lounge, Kitchen Diner & Conservatory
- Two Double Bedrooms, Bathroom
- Low Maintenance Garden
- Paved Driveway
- FREEHOLD / Council Tax Band A



51-53 Moorgate Street, Rotherham, South Yorkshire, S60 2EY
T: 01709 515740 E: info@bartons-net.co.uk

Important Notice These particulars are issued in good faith but do not constitute representations of fact or form part of any contract. These particulars should be independently verified by prospective buyers or tenants. Neither Barton Real Estates Ltd nor any of its employees or agents has any authority to make or give any representation or warranty whatsoever in relation to this property. Any areas of measurement or distances are approximate. Please note that we have not tested the services or any of the equipment in this property, accordingly we strongly advise prospective buyers to commission their own survey or service reports before finalising their offer to purchase. Printed by Racecourse Print Ltd 01670 713330