

**bartons**   
FOR YOUR NEXT MOVE...

Tortmayns, Todwick



This EXTENDED semi-detached home is beautifully presented throughout, located within the sought after village of Todwick.

Being within easy reach of the M1 motorway network, the property includes french shutters and in brief comprises; Entrance Hall \* Open Plan Lounge Diner with Feature Log Burning Stove \* Kitchen with Quartz Worktops and Integral Appliances \* Utility Room \* Shower Room \* Office/ Bedroom 4 - Upstairs - Three Bedrooms \* Modern Bathroom - Outside - Enclosed Generous Lawn and Patio Garden \* Driveway and Detached Garage.

**Offers in the region of: £275,000**

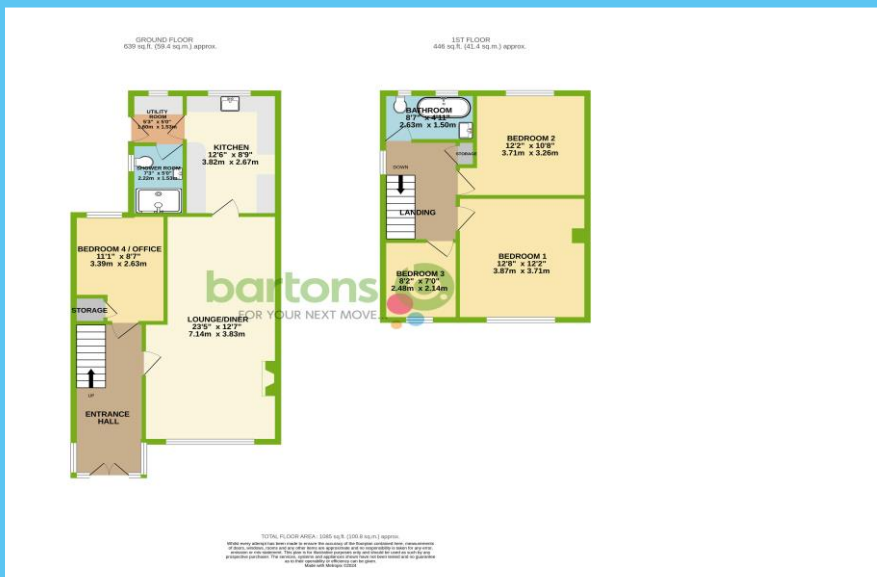
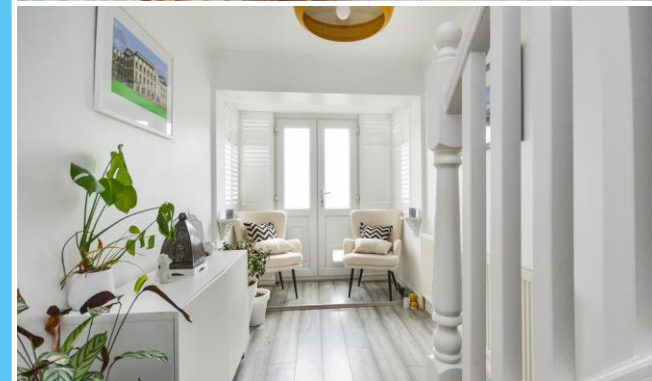
[www.bartons-net.co.uk](http://www.bartons-net.co.uk)





## ACCOMMODATION

- EXTENDED & Beautifully Presented Semi-Detached Home
- Open Plan Lounge Diner with Log Burning Stove
- Modern Kitchen with Quartz Worktops & Integral Appliances
- Home Office/ Bedroom 4, Utility Room & Downstairs Shower Room
- First Floor: Three Bedrooms & Modern Bathroom
- Enclosed Generous Lawn Garden & Patio / Driveway & Detached Garage
- French Shutters & Bedroom Remote Control Blackout Blind Included
- EDEFIELD / Council Tax Band C



**bartons**   
FOR YOUR NEXT MOVE...

51-53 Moorgate Street, Rotherham, South Yorkshire, S60 2EY  
T: 01709 515740 E: info@bartons-net.co.uk