

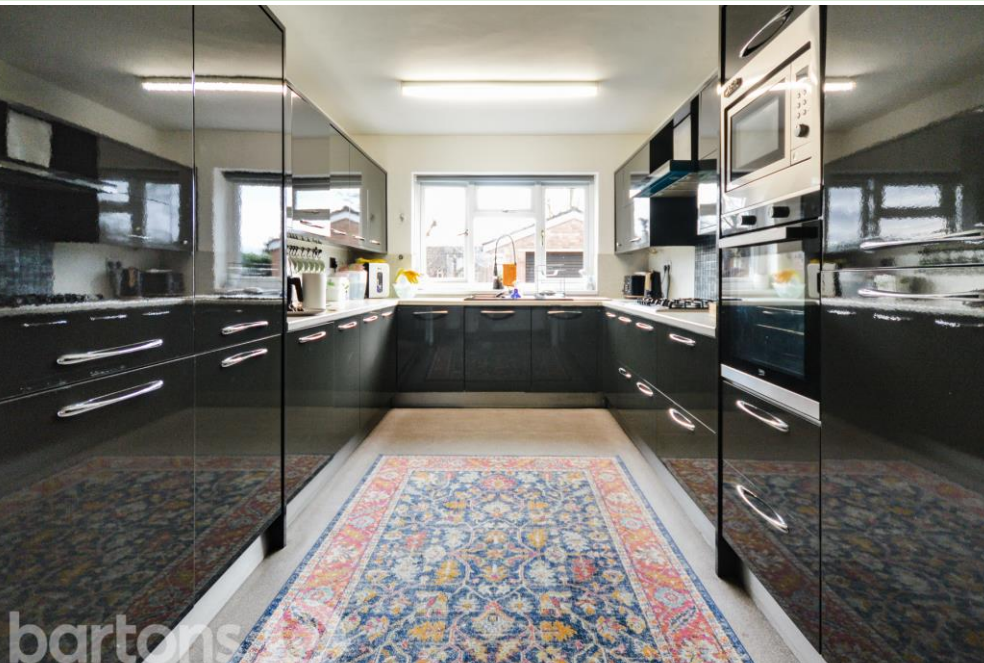
Weetwood Road, Grange



This SIGNIFICANTLY EXTENDED Semi-Detached Home offers spacious and versatile family accommodation within a sought after residential location - being just a short walk to Rotherham Hospital, shops and with great commuter links of the M1 and Sheffield Parkway.

The property in brief comprises; Entrance Hall \* Lounge \* Sitting/Dining Room with French Doors \* Kitchen with Integral Appliances \* Four Bedrooms \* En-suite to Master Bedroom \* Family Bathroom \* Ample Off Road Parking \* Carport with Garage Door \* Rear Low Maintenance Garden \* Detached Double Garage with Electrics.

**Offers in the region of: £325,000**





## ACCOMMODATION

- Significantly Extended, Spacious Semi-Detached Home
- Two Reception Rooms / Generous Kitchen with Integral Appliances
- Four Bedrooms PLUS ATTIC CONVERSION POTENTIAL
- Family Bathroom & En-suite Shower Room
- Ample Off Road Parking & Carport With Garage Door
- Detached Double Garage with Electrics
- Rear Low Maintenance Garden
- FREEHOLD / Council Tax Band C



51-53 Moorgate Street, Rotherham, South Yorkshire, S60 2EY  
 T: 01709 515740 E: info@bartons-net.co.uk