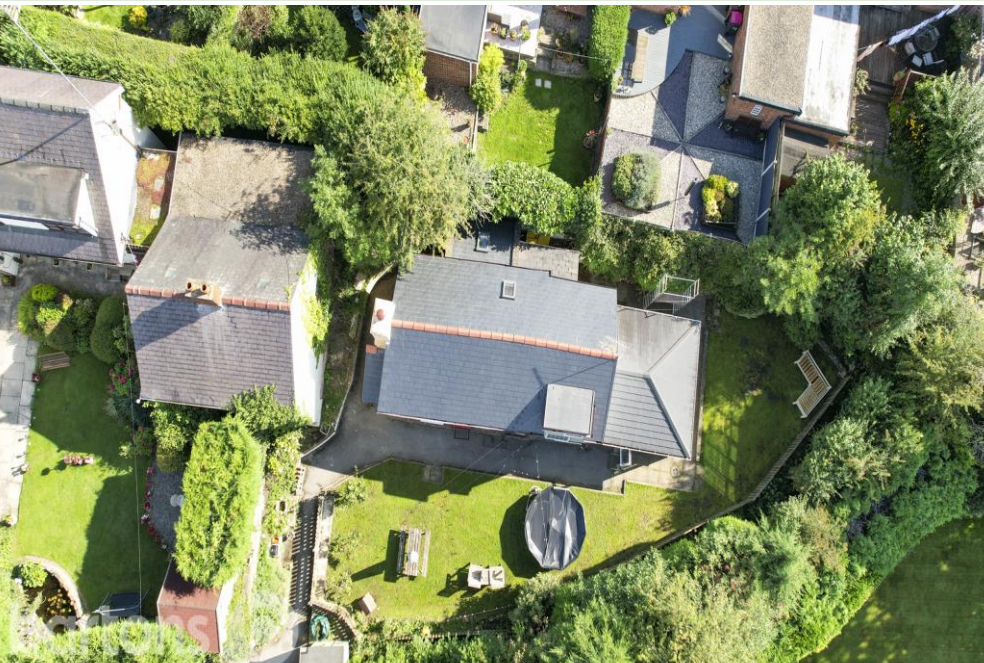




Hill Side, Thorpe Hesley



This Charming Detached Cottage sits in the heart of Thorpe Hesley village, nestled away giving an excellent degree of privacy but within easy walking distance of shops, popular pubs and schools, with the M1 motorway links just a short drive. Having a wrap around plot and retaining many original features, the property in brief comprises; Spacious Lounge with Feature Log Burning Stove * Bespoke Fitted Kitchen * Utility Room/ Porch * WC * Sun Room with Patio Doors * Luxury Bathroom - First Floor, Three Bedrooms - Outside - Private Wrap Around Garden Plot * Driveway for Two Cars.

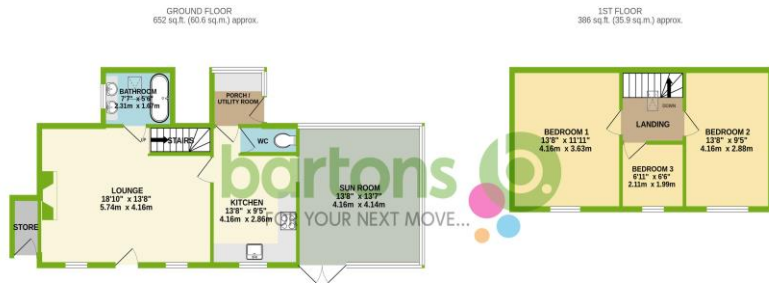
Offers in the region of: £350,000

www.bartons-net.co.uk



ACCOMMODATION

- Charming Detached Cottage - Wrap Around Plot
- Nestled Away in the Heart of Thorpe Hesley Village
- Two Reception Rooms - Log Burning Stove
- Kitchen, Utility Room/ Porch & WC
- Three Bedrooms & Luxury Bathroom
- Retaining Original Character Features Throughout
- Driveway for Two Cars
- FREEHOLD / Council Tax Band C



TOTAL FLOOR AREA: 1038 sq ft. (96.4 sq m.) approx.

Whilst every attempt has been made to ensure the accuracy of the floorplan contained herein, measurements of doors, windows, rooms and any other items are approximate and no responsibility is taken for any error, omission or misstatement. This plan is for illustrative purposes only and should be used for each by any prospective purchaser. The services, systems and appliances shown have not been tested and no guarantee as to their operability or efficiency can be given.

Made with Metrepro (2023)

bartons **b.**
FOR YOUR NEXT MOVE...

51-53 Moorgate Street, Rotherham, South Yorkshire, S60 2EY
T: 01709 515740 E: info@bartons-net.co.uk

Energy Efficiency Rating			
Score	Energy rating	Current	Potential
92+	A		
81-91	B		62 B
69-80	C		
55-68	D	58 D	
39-54	E		
21-38	F		
1-20	G		