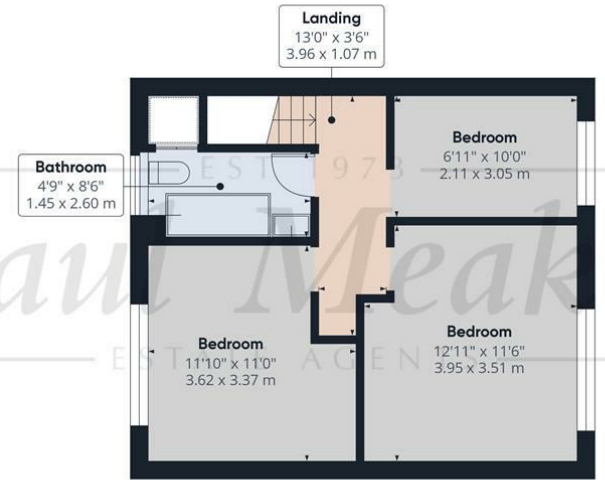




£230,000 North Walk, Croydon, CR0 9ER



Ground Floor



Floor 1

Approximate total area[®]
864.97 ft²
80.36 m²

Reduced headroom
11.68 ft²
1.09 m²

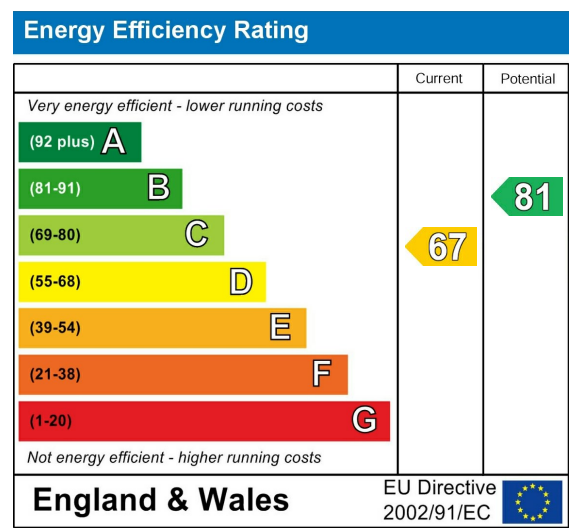
(1) Excluding balconies and terraces

Reduced headroom
..... Below 5 ft/1.5 m

While every attempt has been made to ensure accuracy, all measurements are approximate, not to scale. This floor plan is for illustrative purposes only.

Calculations are based on RICS IPMS 3C standard.

GIRAFFE360



TAX BAND:

Agents Note: Whilst every care has been taken to prepare these sales particulars, they are for guidance purposes only. All measurements are approximate are for general guidance purposes only and whilst every care has been taken to ensure their accuracy, they should not be relied upon and potential buyers are advised to recheck the measurements



Welcomed to the market is this three bedroom mid terraced family home which is situated on Fieldway. Internally the property does require complete modernisation throughout but this has been factored within the asking price. Internally the property benefits from a fitted kitchen and bathroom, useful downstairs cloakroom, large open plan living room, three double bedrooms and level rear garden. Your earliest viewing is warranted to avoid disappointment. Freehold/ Croydon council tax band C/ EPC D.

Hallway
5'9" x 14'2" (1.76 x 4.32)

Downstairs wc

Kitchen
8'6" x 9'10" (2.60 x 3.00)

Living/Dining Room
20'1" x 11'10" (6.14 x 3.61)

Bedroom
6'11" x 10'0" (2.11 x 3.05)

Bedroom
12'11" x 11'6" (3.95 x 3.51)

Bedroom
11'10" x 11'0" (3.62 x 3.37)

Landing

Bathroom

Rear Garden

