

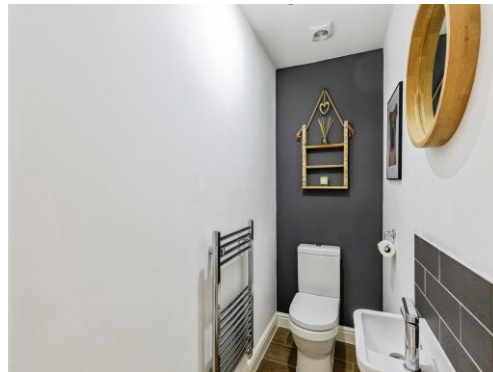
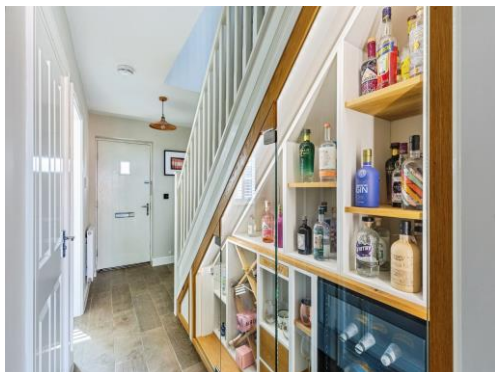


Connells

Sorrel Crescent
Wootton Northampton

Sorrel Crescent Wootton Northampton NN4 6FR

for sale offers over
£550,000



Property Description

This beautifully presented 4-bedroom detached home is located in the sought-after area of Wootton, Northampton. Offering a perfect blend of modern living and space, this property is ideal for families looking for a comfortable and stylish home. Boasting spacious rooms, a well-maintained garden, and a quiet residential setting, this property provides all the essentials for contemporary family life. Conveniently located close to local amenities, excellent schools, and transport links, this home offers both privacy and accessibility. This stunning property offers an excellent opportunity for buyers seeking a spacious family home in a highly desirable location. Book your viewing today!

Cloakroom

Study

6' 8" x 7' 6" (2.03m x 2.29m)

Lounge

13' x 18' 7" (3.96m x 5.66m)

Kitchen / Diner

26' 10" x 9' 7" (8.18m x 2.92m)

Utility

4' 10" x 7' 8" (1.47m x 2.34m)

Bedroom 1

12' 11" x 11' 11" (3.94m x 3.63m)

Ensuite

Bedroom 2

11' 7" x 14' 2" (3.53m x 4.32m)

Bedroom 3

9' x 10' 4" (2.74m x 3.15m)

Bedroom 4

8' 11" x 10' (2.72m x 3.05m)

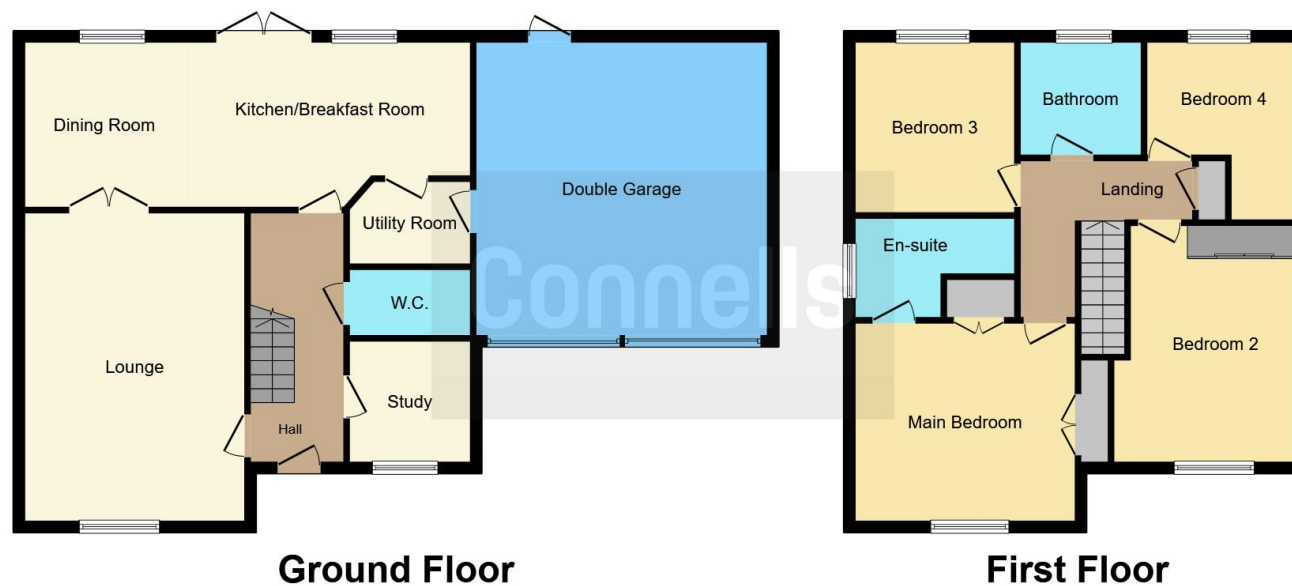
Garage

19' 11" x 17' 9" (6.07m x 5.41m)









This floor plan is for illustrative purposes only. It is not drawn to scale. Any measurements, floor areas (including any total floor area), openings and orientation are approximate. No details are guaranteed, they cannot be relied upon for any purpose and they do not form part of any agreement. No liability is taken for any error, omission or misstatement. A party must rely upon its own inspection(s). Powered by www.focalagent.com

To view this property please contact Connells on

T 01604 706644
E woottonfields@connells.co.uk

11 Tudor Court Wootton Hope Drive Wootton
 NORTHAMPTON NN4 6FF

EPC Rating: B

Tenure: Freehold

view this property online connells.co.uk/Property/WFL408127



1. MONEY LAUNDERING REGULATIONS Intending purchasers will be asked to produce identification documentation at a later stage and we would ask for your co-operation in order that there will be no delay in agreeing the sale. 2. These particulars do not constitute part or all of an offer or contract. 3. The measurements indicated are supplied for guidance only and as such must be considered incorrect. Potential buyers are advised to recheck measurements before committing to any expense. 4. We have not tested any apparatus, equipment, fixtures, fittings or services and it is in the buyers interest to check the working condition of any appliances.

Connells Residential is registered in England and Wales under company number 1489613, Registered Office is Cumbria House, 16-20 Hockliffe Street, Leighton Buzzard, Bedfordshire, LU7 1GN. VAT Registration Number is 500 2481 05.

See all our properties at www.connells.co.uk | www.rightmove.co.uk | www.zoopla.co.uk

Property Ref: WFL408127 - 0006